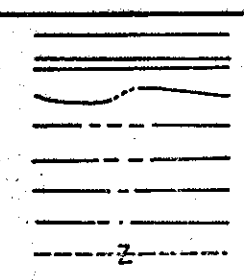


2,000,000
250,000

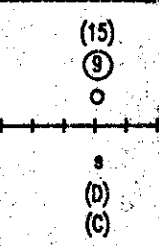
West Virginia State Tax Department
For Tax Purposes Only
Base Mapping - Prepared By
Pentree, Inc.
Oak Hill, West Virginia
Cadastral Mapping - Prepared By
Brackenrich & Associates, Inc.
Lewisburg, West Virginia

LEGEND

Property line
Roadway
Water
Corporation line
District line
County line
State line
Land hook



Original lot line or interior tract
Deed lot number
Parcel or index number
Improvement
Railroad
Scaled dimension
Deed
Calculated area

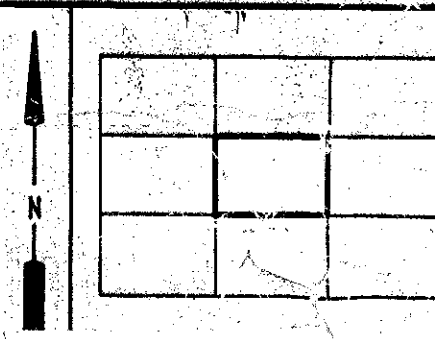
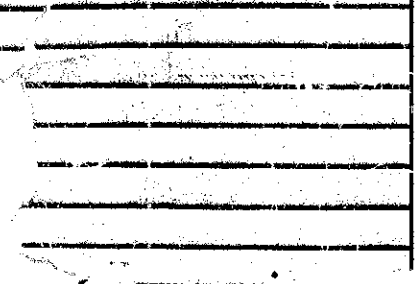


RESTRICTION

All tax maps created under the provisions of reopercua legislation are the property of the State of West Virginia and the production, copying, distribution or sale of such tax maps or any copies thereof without the written permission of the State Tax Commissioner is prohibited by law.

REVISIONS

SPH	



GREENER COUNTY
STATE OF WEST VIRGINIA
Lewisburg, West Virginia

LA DIS
MAY 19