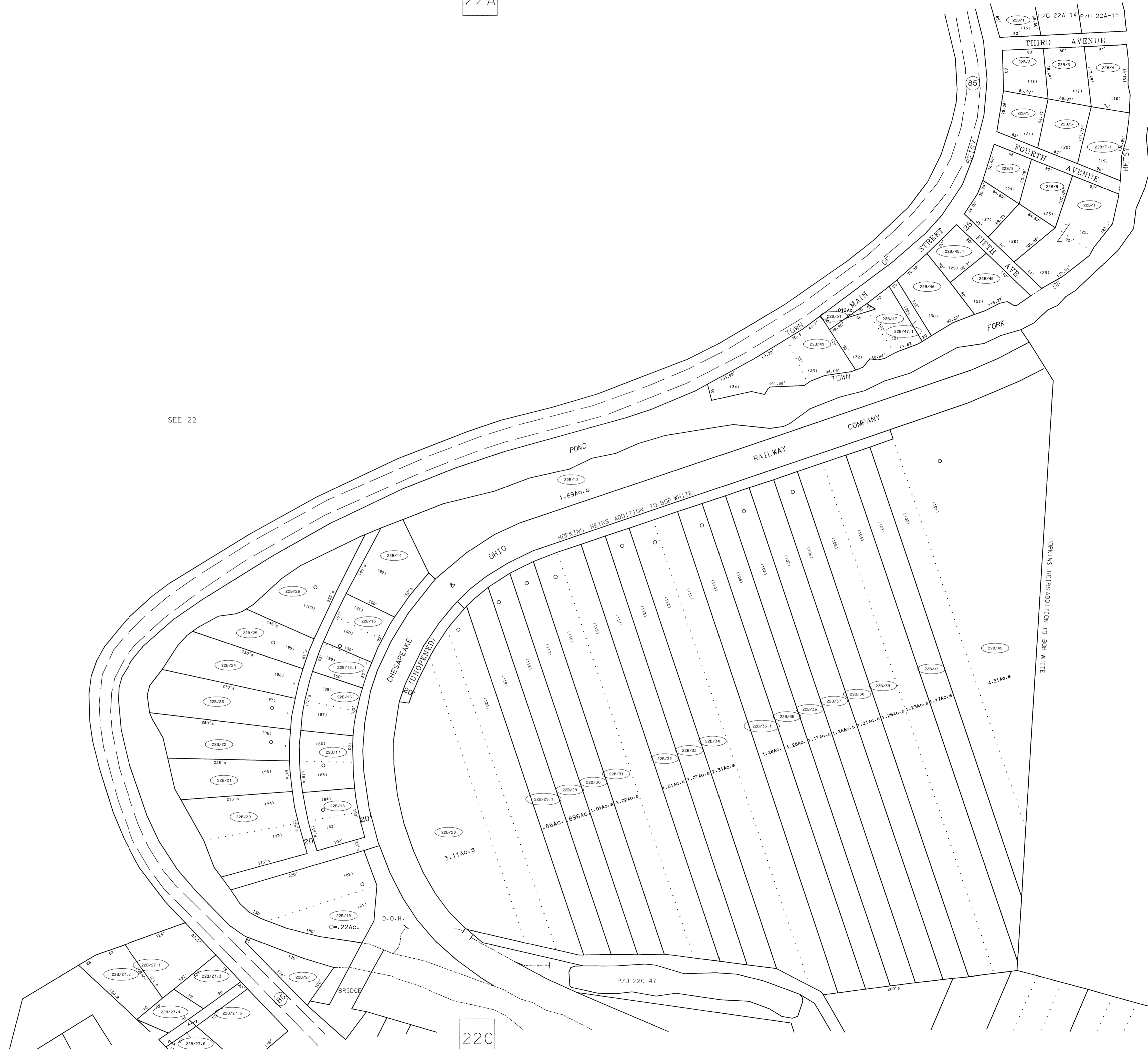


22A

SEE 22

22C

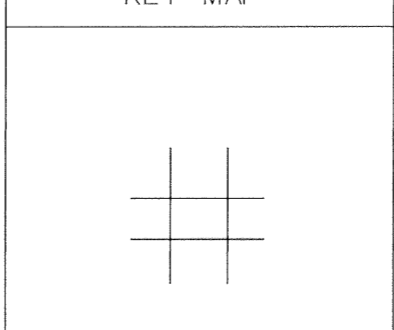


For Tax Purposes Only
 Prepared by
 McKenzie Engineering Corporation
 402 Church Street
 Summersville, WV 26651

LEGEND		REVISIONS	
Property line	—————	1	
Edge of pavement or roadway	—————	2	
Corporation line	—————	3	
District line	—————	4	
County line	—————	5	
Original lot line	-----	6	
Deed lot number	(15)	7	
Parcel or index number	(10)	8	
Improvement	o		
Railroad	—————		

RESTRICTION	

All tax maps created under the provisions of reappraisal legislation are the property of the Assessor of Boone County, West Virginia and the reproduction, copying, modification, distribution or sale of such tax maps or any copies thereof without the written permission of the Boone County Assessor is prohibited by law



BOONE COUNTY
 STATE OF WEST VIRGINIA
 Office of Assessor

CROOK DISTRICT
 MAP NO: 22B
 Date, Aerial Photography: 4-25-62
 Photo No: 57-14868/1487
 57-14858/1486
 Date, Map: 4-23-63
 Scale: 1"=100'