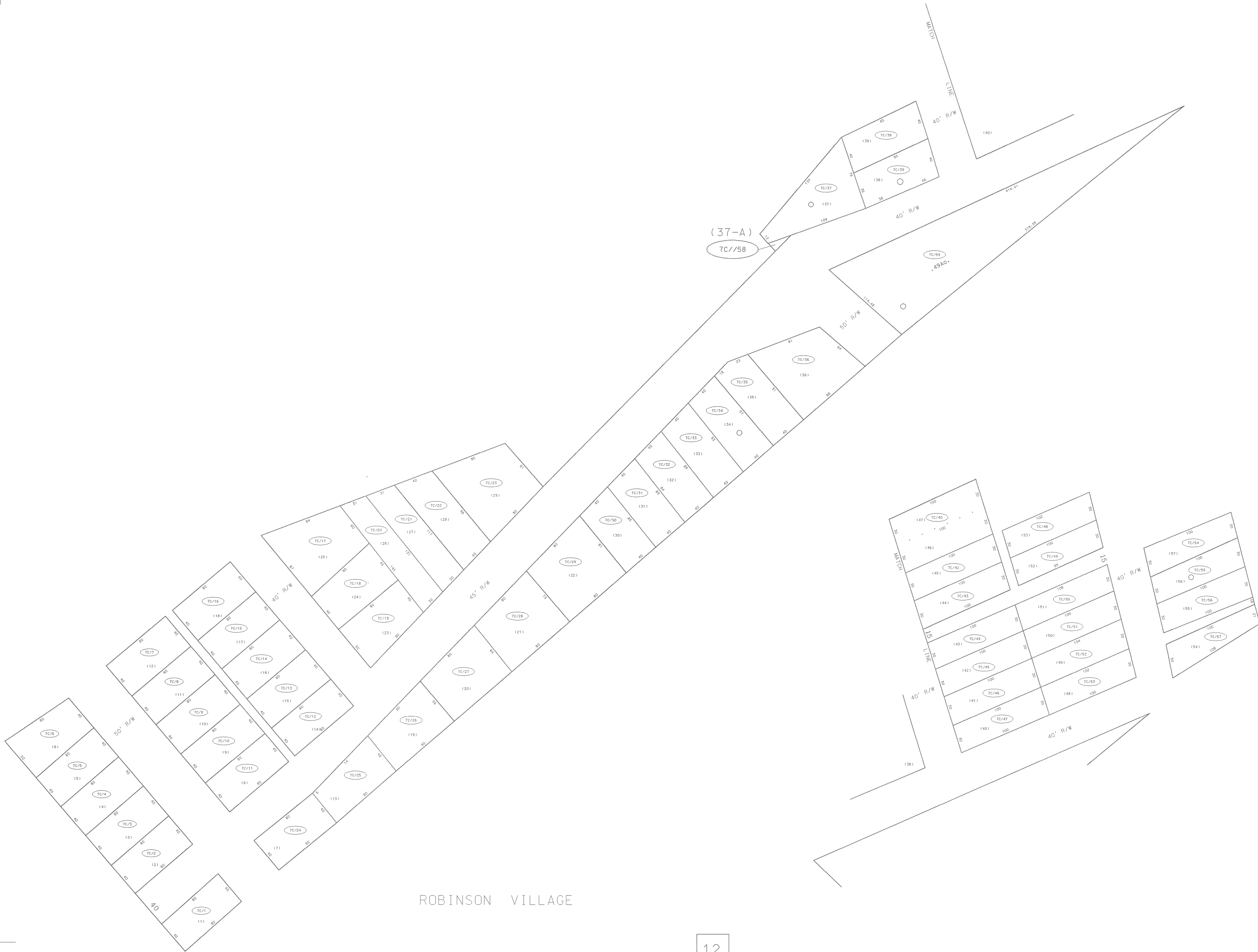


7

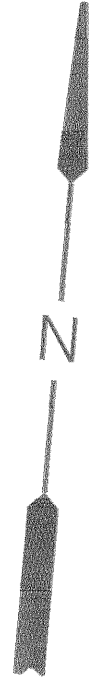
7

7

12



ROBINSON VILLAGE



For Tax Purposes Only

Prepared by
 McKenzie Engineering Corporation
 402 Church Street
 Summersville, WV 26651

LEGEND	
Property line	—————
Edge of pavement or roadway	———
Corporation line	-----
District line	- - - - -
County line	—————
Original lot line	- - - - -
Deed lot number	(15)
Parcel or index number	99
Improvement	○
Railroad	—————

REVISIONS	
1	
2	
3	
4	
5	
6	
7	
8	

RESTRICTION

All tax maps created under the provisions of reappraisal legislation are the property of the Assessor of Boone County, West Virginia and the reproduction, copying, modification, distribution or sale of such tax maps or any copies thereof without the written permission of the Boone County Assessor is prohibited by law

KEY MAP		
7	7	7
7	7C	7
	12	

BOONE COUNTY
 STATE OF WEST VIRGINIA
 Office of Assessor

CROOK DISTRICT

MAP NO: 7C

Date, Aerial Photography: Photo No:
 Date, Map: 1985
 Scale: 1"=50'