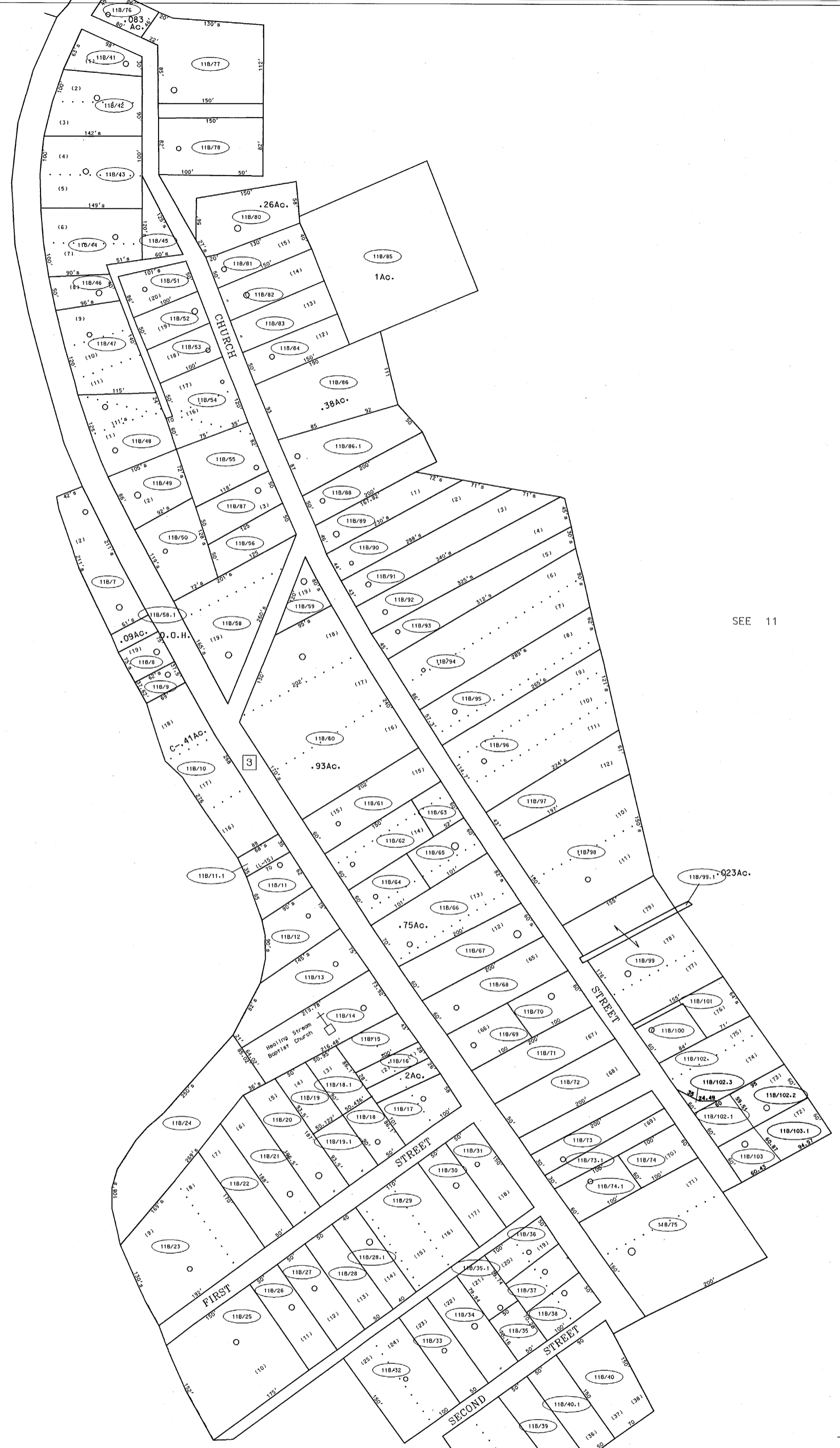


SEE 11



SEE 11

17A

For Tax Purposes Only

Prepared by  
 McKenzie Engineering Corporation  
 402 Church Street  
 Summersville, WV 26651

LEGEND

Property line	—	Original lot line	—
Edge of pavement or roadway	—	Dead lot number	(15)
Corporation line	—	Parcelor index number	(99)
District line	—	Improvement	o
County line	—	Road	—

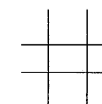
REVISIONS

1	
2	
3	
4	
5	
6	
7	
8	

RESTRICTION

All tax maps created under the provisions of reappraisal legislation are the property of the Assessor of Boone County, West Virginia and the reproduction, copying, modification, distribution or sale of such tax maps or any copies thereof without the written permission of the Boone County Assessor is prohibited by law

KEY MAP



BOONE COUNTY  
 STATE OF WEST VIRGINIA  
 Office of Assessor

SHERMAN DISTRICT

MAP NO: 11B  
 Date, Aerial Photography: 4-24-62 Date, Map: 6-3-63  
 Photo No: 27-369-370, 28-352-353 Scale: 1" = 100'  
 27-370-371, 28-351-352

C:\P\17A\17A.DWG 11/18/2011 10:51:28