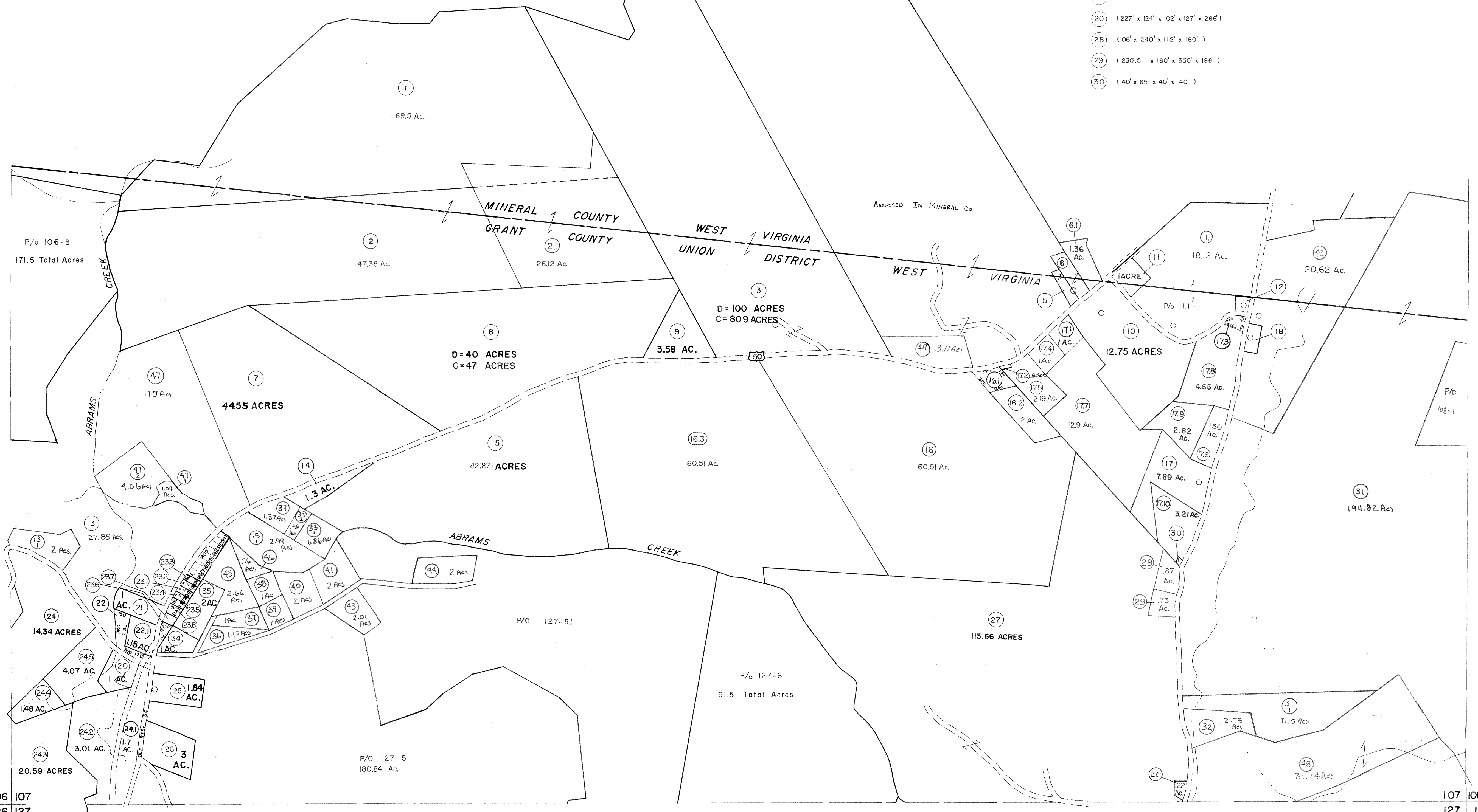


106 | 107

107 | 108

- 5 (67' x 330.4' x 54' x 312.5')
- 6 (100' x 409.5' x 109' x 375')
- 12 (118' x 87' x 123' x 137.4')
- 18 (104.4' x 208.75')
- 20 (227' x 124' x 102' x 127' x 266')
- 28 (106' x 240' x 112' x 160')
- 29 (230.5' x 160' x 350' x 186')
- 30 (40' x 65' x 40' x 40')



For Tax Purposes Only
 Prepared by
MICHAEL BAKER, JR., INC.
 Consulting Engineers
 Rochester, Pennsylvania

Legend	
Property line	—————
Edge of pavement or roadway	—————
Corporation line	—————
District line	—————
County line	—————
Original lot line	—————
Deed lot number	(15)
Parcel or index number	(22)
Improvement	○
Railroad	—————

Revisions	
1	5-17-73-D.M.V.
2	MAR 75 PAM
3	JULY 1981 TRL
4	JULY 1982 TRL
5	REV. TO 7-1-83 NCS
6	REV. TO 7-1-84 NCS
7	REV. TO 7-1-85 NCS
8	July, 1986 TRL
9	REV. TO 7-19-89 R.E.B.
10	EXCALIBUR GRAPHICS 7/91
11	EXCALIBUR GRAPHICS 7/93
12	EXCALIBUR 6-98
13	EXCALIBUR 7/01
14	EXCALIBUR 12-01
15	EXCALIBUR 7-03
16	EXCALIBUR 7-05
17	EXCALIBUR 7/07
18	
19	
20	
21	
22	
23	
24	

KEY MAP

GRANT COUNTY
 STATE OF WEST VIRGINIA
 Office of Assessor

DISTRICT **UNION**
SHEET NO: 107
 Date, Aerial Photography: Nov., 1961 Date, Map: Dec., 1962
 Photo No: Scale: 1" = 400'