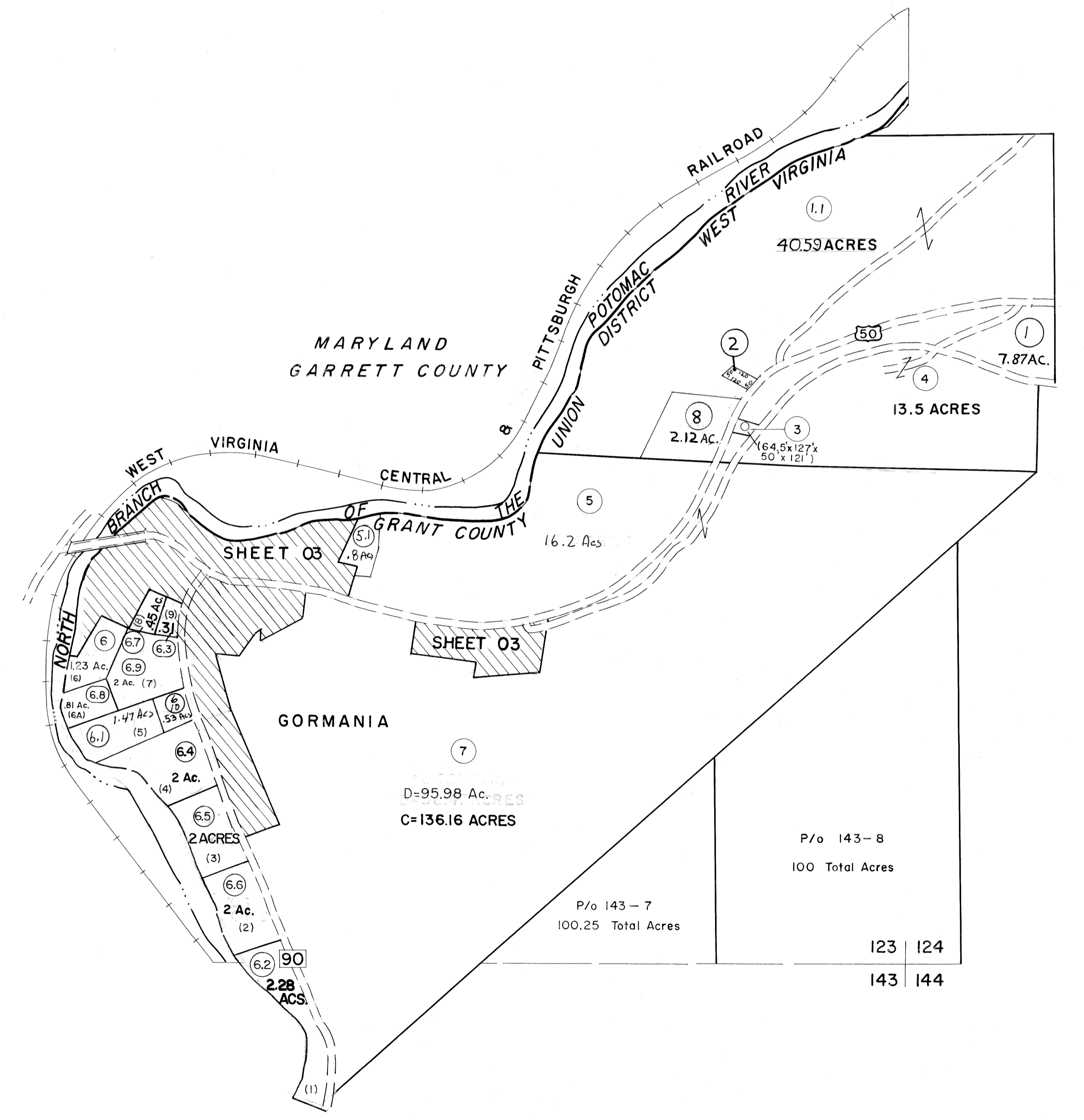


123

104  
123 124



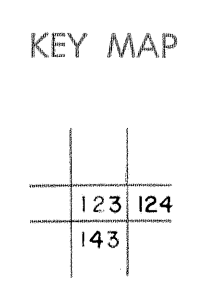
123  
143



**For Tax Purposes Only**  
Prepared by  
**MICHAEL BAKER, JR., INC.**  
Consulting Engineers  
Rochester, Pennsylvania

Legend	
Property line	—
Edge of pavement or roadway	- - - - -
Corporation line	· · · · ·
District line	- - - - -
County line	—
Original lot line	- - - - -
Dead lot number	(15)
Parcel or index number	(22)
Improvement	o
Railroad	+

Revisions				
1	5-17-73	D.W.K.	9	EXCALIBUR GRAPHICS 7/91
2	JULY, 1981	TRL	10	EXCALIBUR 6/97
3	JULY, 1982	TRL	11	EXCALIBUR 7/06
4	REV. TO 7-1-83	NCS	12	
5	July, 1984	MLK	13	
6	REV. TO 7-1-85	NCS	14	
7	July, 1986	TRL	15	
8	Revised to 7-1-87	DF	16	



**GRANT COUNTY**  
STATE OF WEST VIRGINIA  
Office of Assessor

DISTRICT **UNION**  
**SHEET NO: 123**  
Date, Aerial Photography: Nov., 1961 Date, Map: Dec., 1962  
Photo No: Scale: 1" = 400'