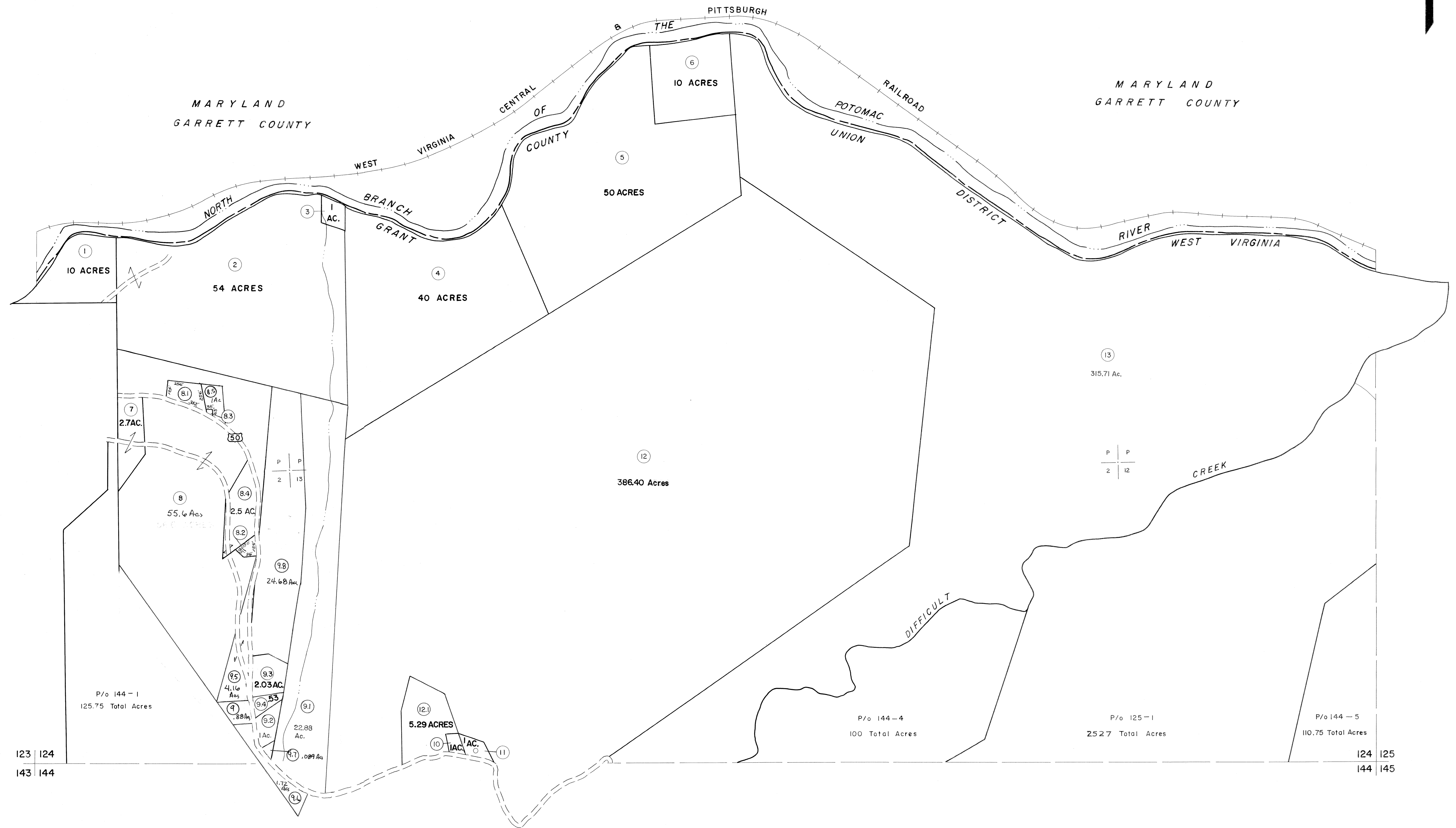


104  
123 124

104 105  
124 125

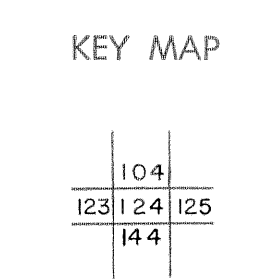


For Tax Purposes Only

Prepared by  
**MICHAEL BAKER, JR., INC.**  
 Consulting Engineers  
 Rochester, Pennsylvania

Legend	
Property line	—
Edge of pavement or roadway	- - - - -
Corporation line	— · — · —
District line	- - - - -
County line	- - - - -
Original lot line	- - - - -
Deed lot number	(15)
Parcel or index number	(22)
Improvement	o
Railroad	— + — + —

Revisions	
1	5-22-68
2	5-17-73 - D. W. V.
3	JULY, 1981 TRL
4	JULY, 1982 TRL
5	REV. TO 7-1-83 NCS
6	REV. TO 7-1-85 NCS
7	EXCALIBUR GRAPHICS 7/91
8	EXCALIBUR 07/07



**GRANT COUNTY**  
 STATE OF WEST VIRGINIA  
 Office of Assessor

DISTRICT	
<b>UNION</b>	
<b>SHEET NO: 124</b>	
Date, Aerial Photography: Nov., 1961	Date, Map: Dec., 1962
Photo No:	Scale: 1" = 400'