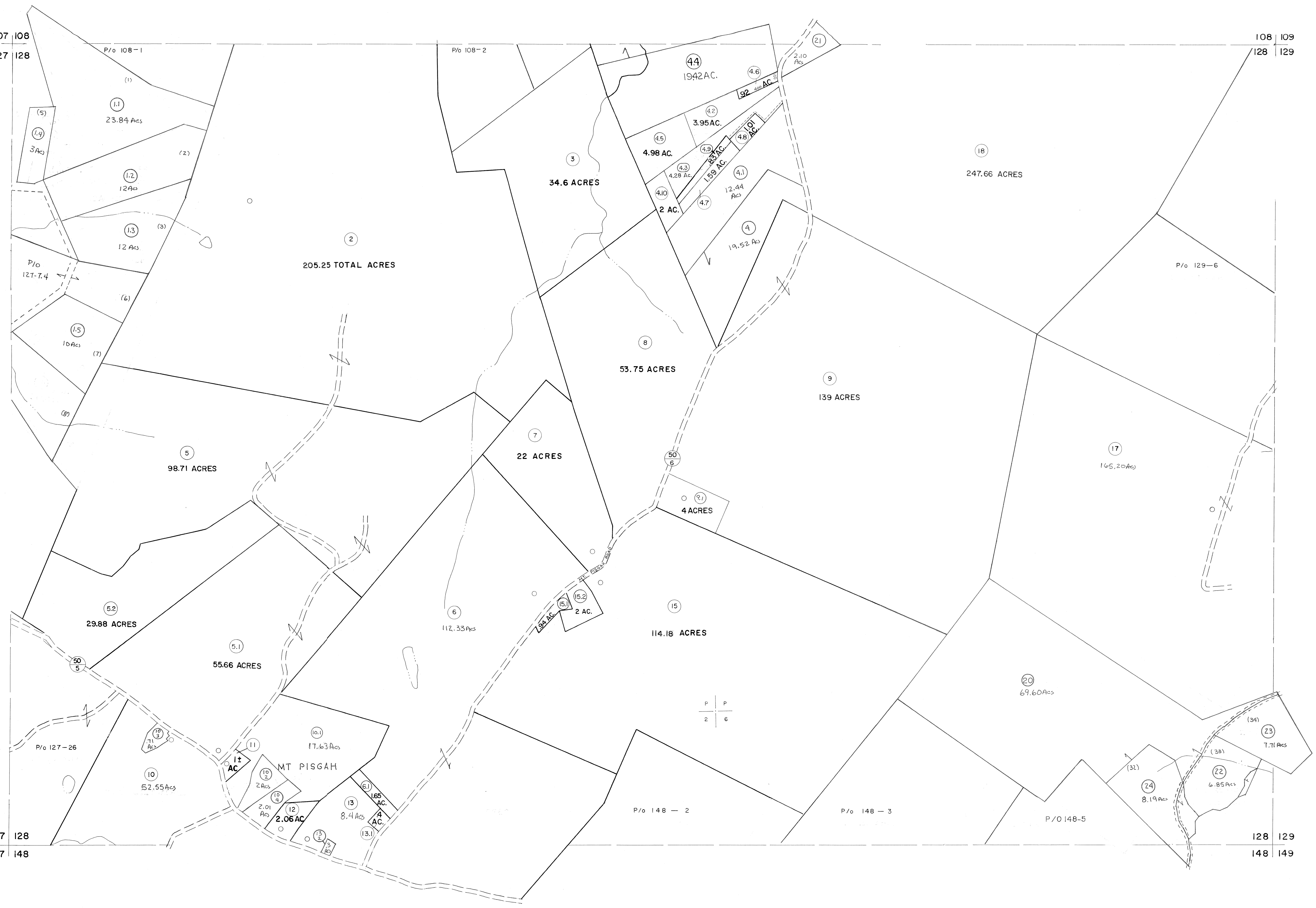


107 108
127 128

108 109
128 129

127 128
147 148

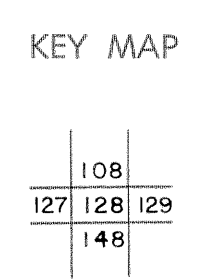
128 129
148 149



For Tax Purposes Only
 Prepared by
MICHAEL BAKER, JR., INC.
 Consulting Engineers
 Rochester, Pennsylvania

Legend	
Property line	—————
Edge of pavement or roadway	—————
Corporation line	—————
District line	—————
County line	—————
Original lot line	-----
Deed lot number	(15)
Parcel or index number	(29)
Improvement	o
Railroad	—+—+—+—

Revisions	
1	5-18-73 - D.W.V.
2	3/9/75
3	REV. TO 7/81 DR. 3/82 NS
4	JULY 1982 TRI
5	REV. TO 7-1-83 NCS
6	REV. TO 7-1-85 NCS
7	REV. TO 7-1-85 NCS
8	REV. TO 7-1-85 NCS
9	EXCALIBUR GRAPHICS 7/91
10	EXCALIBUR GRAPHICS 7/93
11	EXCALIBUR 6/98
12	EXCALIBUR 6/99
13	EXCALIBUR 12-01
14	EXCALIBUR 7/03
15	EXCALIBUR 7/07
16	EXCALIBUR 7/07



GRANT COUNTY
 STATE OF WEST VIRGINIA
 Office of Assessor

DISTRICT **UNION**
SHEET NO: 128
 Date, Aerial Photography: Nov, 1961 Date, Map: Dec, 1962
 Photo No: Scale: 1" = 400'