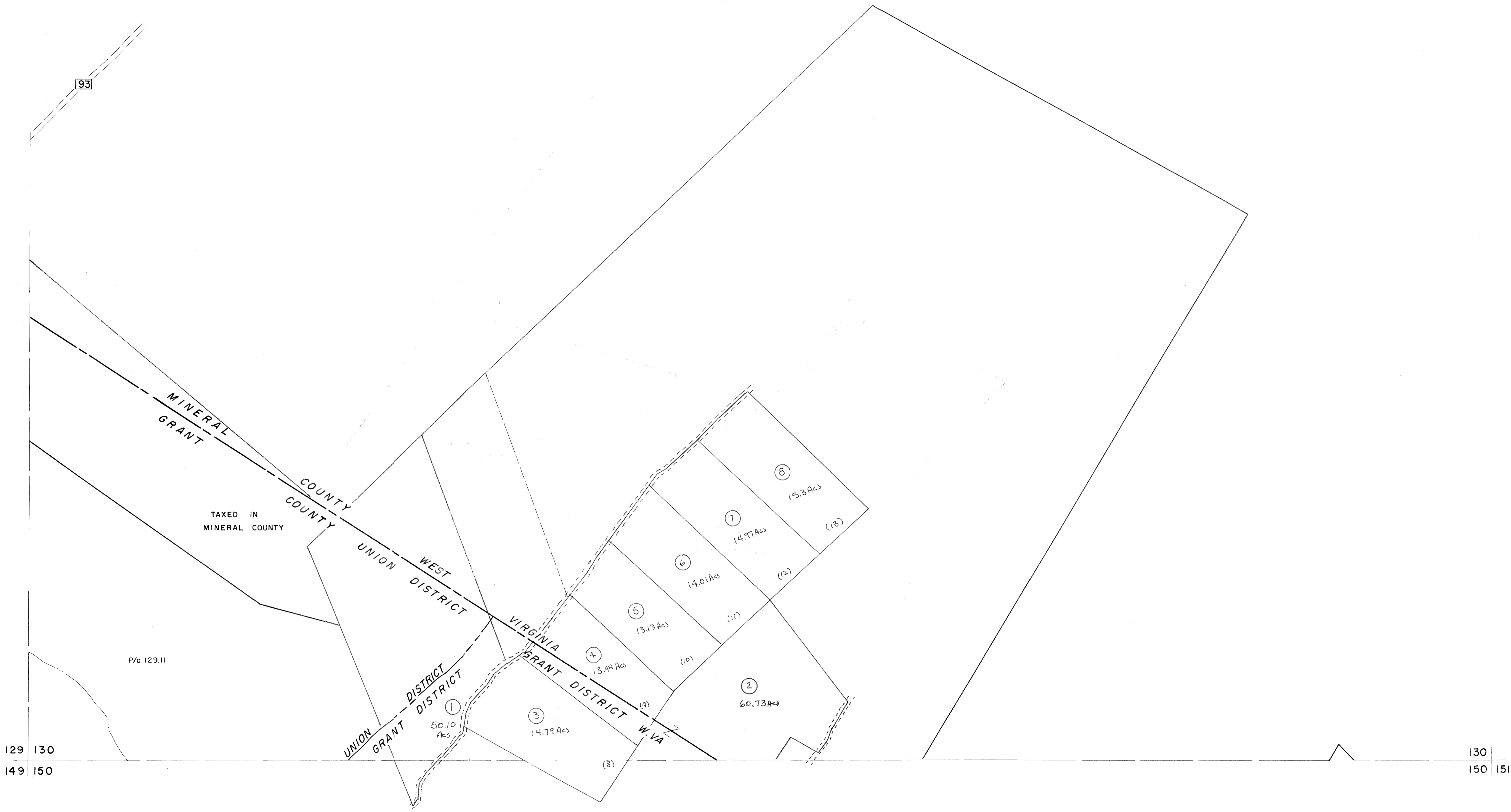


109  
129 130

130



For Tax Purposes Only

Prepared by  
MICHAEL BAKER, JR., INC.  
Consulting Engineers  
Rochester, Pennsylvania

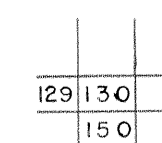
Legend

Property line	—————	Original lot line	-----
Edge of pavement or roadway	-----	Deed lot number	(15)
Corporation line	-----	Parcel or index number	(22)
District line	-----	Improvement	o
County line	-----	Railroad	+

Revisions

1	3/1/75	30	9	EXCALIBUR	07/07	17
2	REV. TO 7/81 DR. 3/82 NS		10			18
3	JULY 1982	TRL	11			19
4	EXCALIBUR GRAPHICS 7/91		12			20
5	EXCALIBUR GRAPHICS 7/93		13			21
6	EXCALIBUR 1/99		14			22
7	EXCALIBUR 12-01		15			23
8	EXCALIBUR 7/03		16			24

KEY MAP



GRANT COUNTY  
STATE OF WEST VIRGINIA  
Office of Assessor

DISTRICT UNION GRANT

SHEET NO: 130

Date, Aerial Photography: Nov., 1961 Date, Map: Dec., 1962  
Photo No: Scale: 1" = 400'