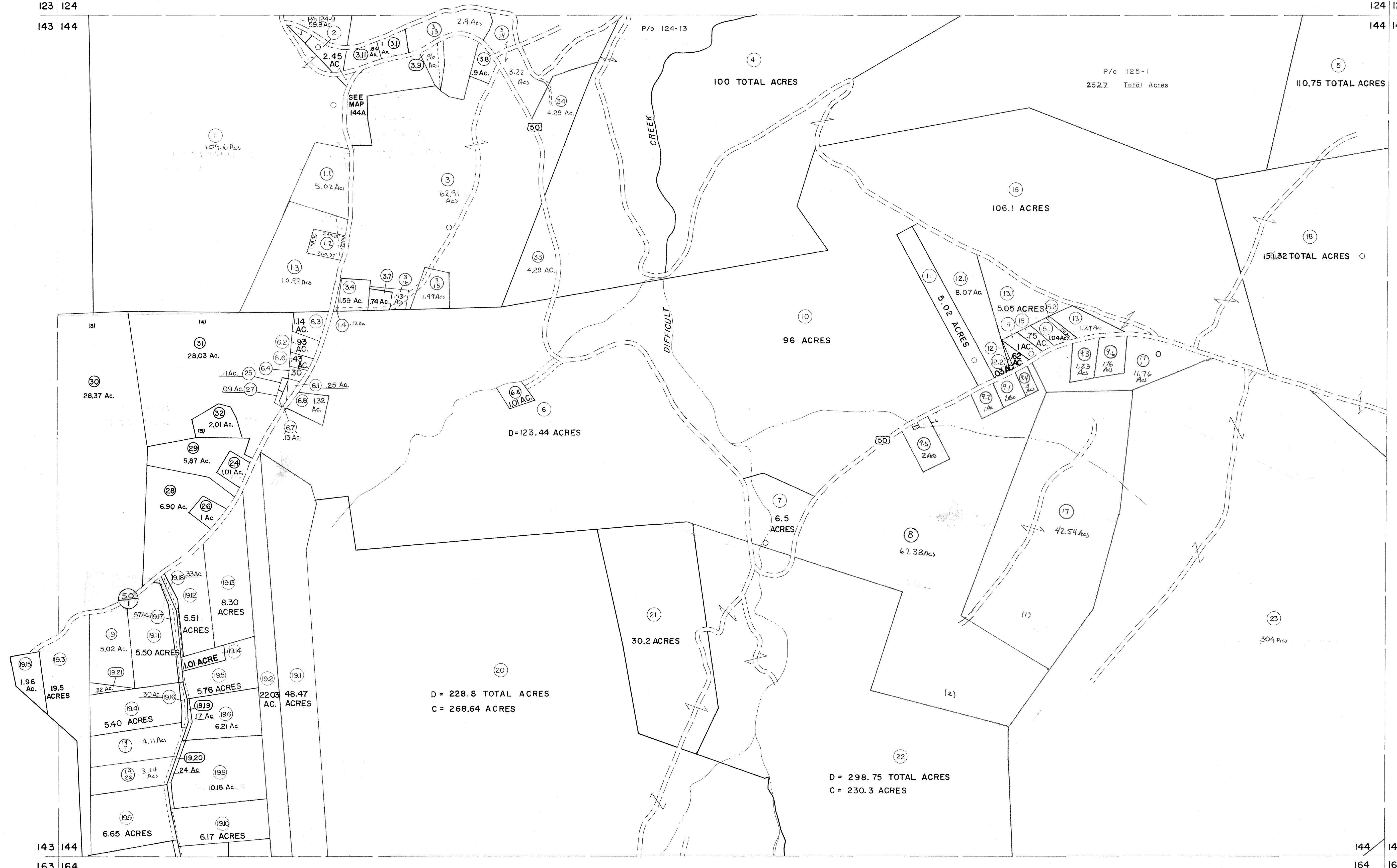


123 | 124

143 | 144

124 | 125

144 | 145



For Tax Purposes Only

Prepared by  
MICHAEL BAKER, JR., INC.  
Consulting Engineers  
Rochester, Pennsylvania

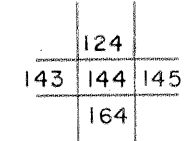
Legend

Property line	— — — — —	Original lot line	— — — — —
Edge of pavement or roadway	— — — — —	Deed lot number	(15)
Corporation line	— — — — —	Parcel or index number	(22)
District line	— — — — —	Improvement	o
County line	— — — — —	Railroad	— — — — —

Revisions

1	5-22-83	9	July, 1986	TRL	17
2	5-18-73-D.W.V.	10	Revised to 7-1-87	REB.	18
3	3-2-75	11	REV. TO 7-19-89	R.E.B.	19
4	11/19/76	12	EXCALIBUR GRAPHICS 7/91		20
5	REV. TO 7/81 DR. 3/82 NS	13	EXCALIBUR GRAPHICS 7/93		21
6	JULY 1982	14	EXCALIBUR 12-01		22
7	REV. TO 7-1-83	15	EXCALIBUR 7/03		23
8	REV. TO 7-1-85	16	EXCALIBUR 7/7		24

KEY MAP



GRANT COUNTY  
STATE OF WEST VIRGINIA  
Office of Assessor

DISTRICT

UNION

SHEET NO: 144

Date, Aerial Photography: Nov., 1961 Date, Map: Dec, 1962  
Photo No: Scale: 1" = 400'