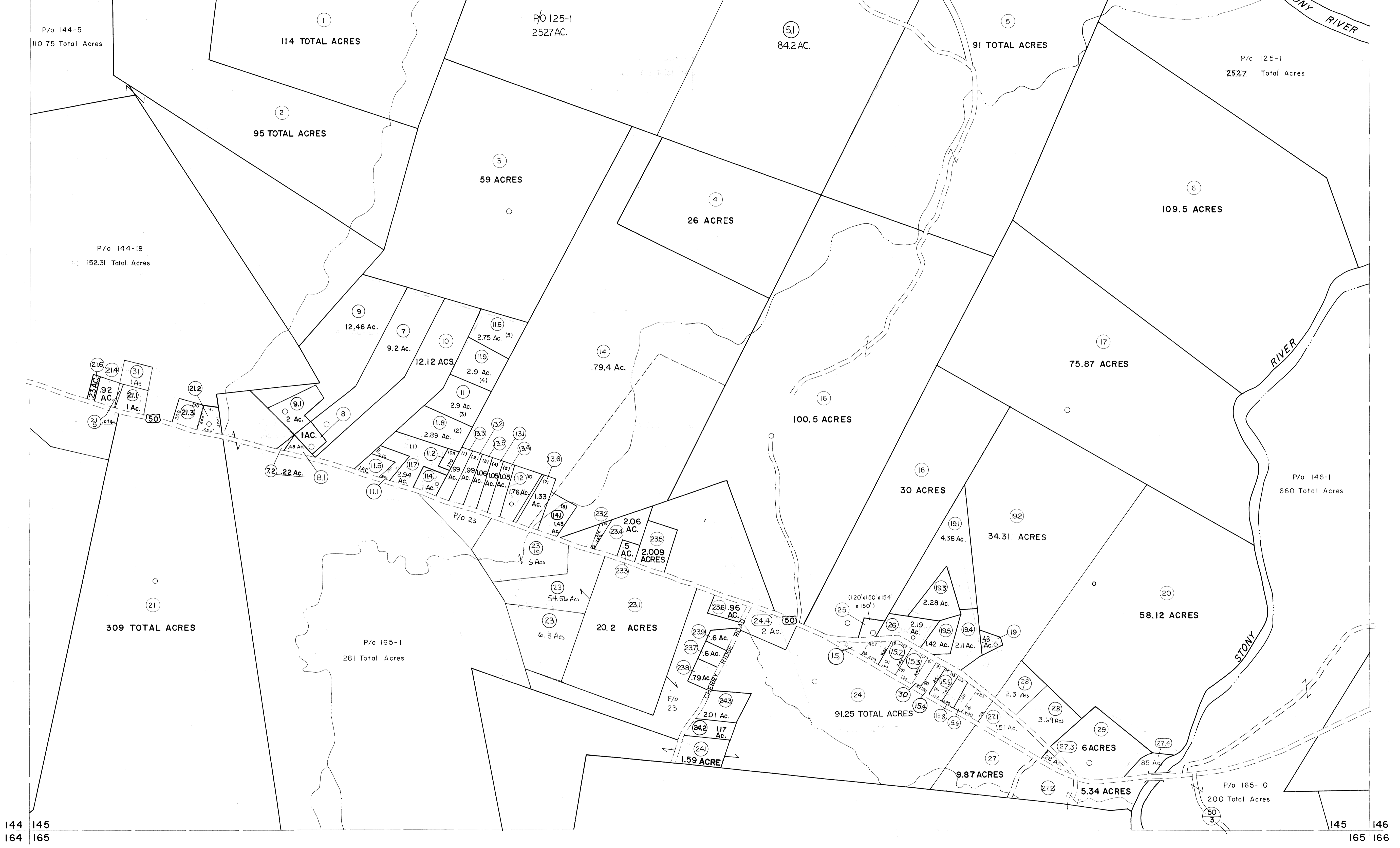


124 125
144 145

125 126
145 146



144 145
164 165

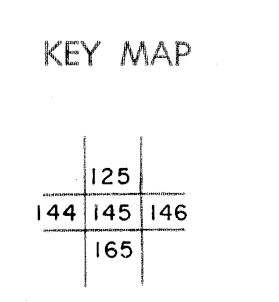
145 146
165 166

For Tax Purposes Only

Prepared by
MICHAEL BAKER, JR., INC.
Consulting Engineers
Rochester, Pennsylvania

Legend	
Property line	—————
Edge of pavement or roadway	—————
Corporation line	—————
District line	—————
County line	—————
Original lot line	-----
Deed lot number	(15)
Parcel or index number	(2)
Improvement	o
Railroad	—+—+—+—

Revisions	
1	5-22-68
2	5-18-73-D.W.V.
3	REV. TO 7/81 DR. 3/82 NCS
4	JULY, 1982 TRL
5	REV. TO 7-1-83 NCS
6	July, 1984
7	REV. TO 7-1-85 NCS
8	July, 1986 TRL
9	Rev. to 7-19-89 R.E.B.
10	EXCALIBUR GRAPHICS 7/91
11	EXCALIBUR GRAPHICS 7/92
12	Excavator 6/99
13	E.V. Co. 1/00 7/03
14	
15	
16	
17	
18	
19	
20	
21	
22	
23	
24	



GRANT COUNTY
STATE OF WEST VIRGINIA
Office of Assessor

DISTRICT **UNION**

SHEET NO: 145

Date, Aerial Photography: Nov., 1961 Date, Map: Dec., 1962
Photo No: Scale: 1" = 400'