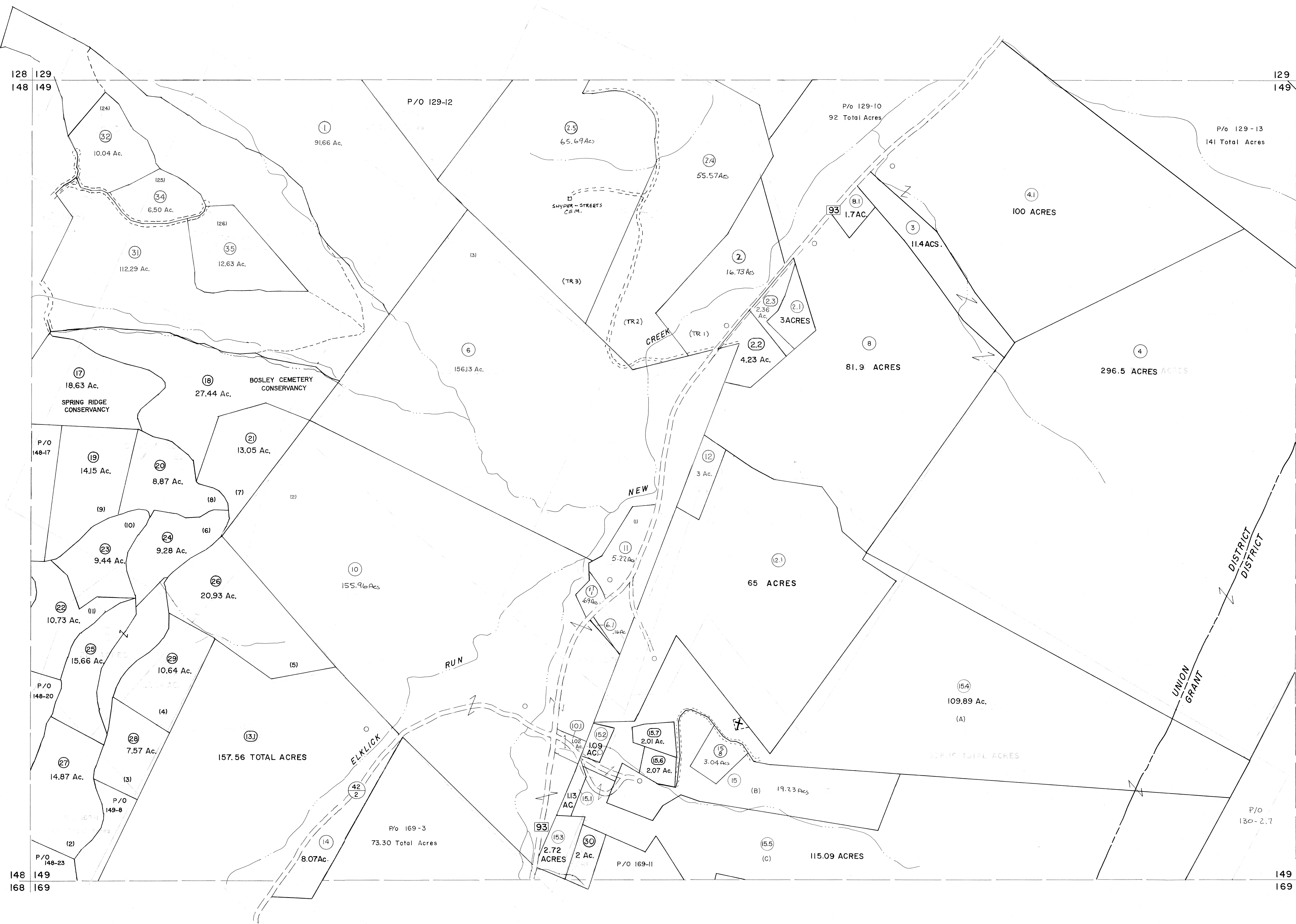


128 129
148 149

129 130
149 150

148 149
168 169

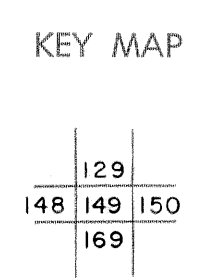
149 150
169 170



For Tax Purposes Only
 Prepared by
MICHAEL BAKER, JR., INC.
 Consulting Engineers
 Rochester, Pennsylvania

Legend	
Property line	—
Edge of pavement or roadway	—
Corporation line	—
District line	—
County line	—
Original lot line	- - - -
Deed lot number	(15)
Parcel or index number	(99)
Improvement	○
Railroad	—+—

Revisions		
1	5-22-63	9 EXCALIBUR GRAPHICS 7/92
2	5-21-73-D.W.V.	10 EXCALIBUR GRAPHICS 7/93
3	MAR 75 PAM	11 EXCALIBUR 1/99
4	REV. TO 7/81 DR. 3/82 NCS	12 EXCALIBUR 6/99
5	JULY, 1982	13 EXCALIBUR 7/05
6	REV. TO 7-1-85	14
7	REV. TO 7-19-89	15
8	EXCALIBUR GRAPHICS 7/91	16



GRANT COUNTY
 STATE OF WEST VIRGINIA
 Office of Assessor

DISTRICT
UNION-GRANT
 SHEET NO: 149
 Date, Aerial Photography: Nov., 1961 Date, Map: Dec. 1962
 Photo No: Scale: 1" = 400'