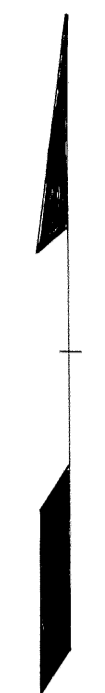
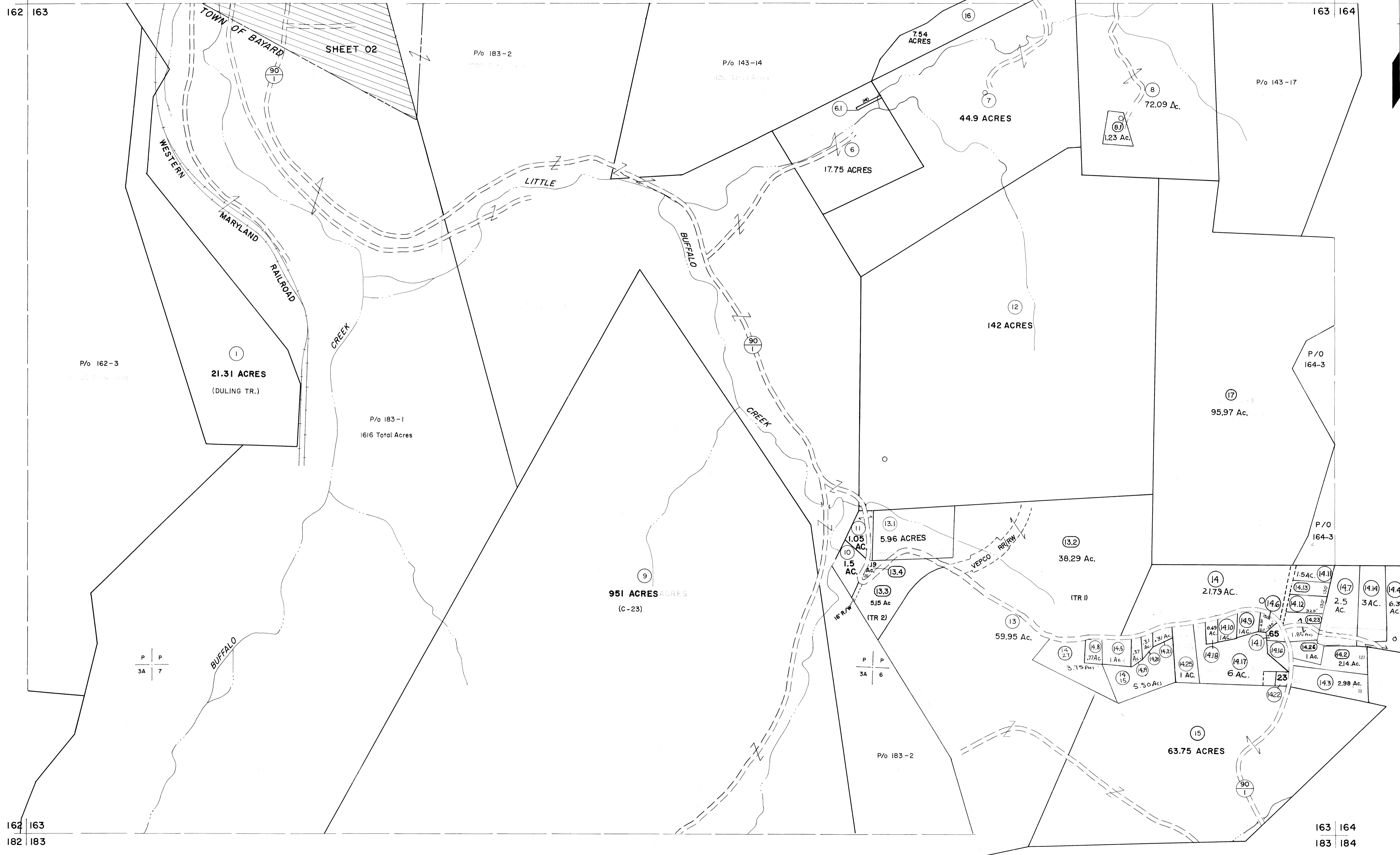


142 | 143
162 | 163

143 | 144
163 | 164

162 | 163
182 | 183

163 | 164
183 | 184



For Tax Purposes Only

Prepared by
MICHAEL BAKER, JR., INC.
 Consulting Engineers
 Rochester, Pennsylvania

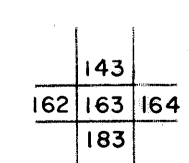
Legend

Property line	—————	Original lot line	-----
Edge of pavement or roadway	-----	Deed lot number	(15)
Corporation line	-----	Parcel or index number	(2)
District line	-----	Improvement	o
County line	-----	Railroad	+

Revisions

1	5-22-63	9	Rev. to 7-19-89	R.E.B.	17
2	6-1-73 D.W. YANNY	10	EXCALIBUR GRAPHICS 7/91		18
3	11/19/14	11	EXCALIBUR GRAPHICS 7/93		19
4	REV. TO 7/81 DR. 3/82 NS	12	EXCALIBUR 6/99		20
5	JULY 1982	13			21
6	REV. TO 7-1-85	14			22
7	JULY 1986	15			23
8	Revised to 7-1-87	16			24

KEY MAP



GRANT COUNTY
 STATE OF WEST VIRGINIA
 Office of Assessor

DISTRICT

UNION

SHEET NO: 163

Date, Aerial Photography: Nov., 1961 Date, Map: Dec., 1962
 Photo No. Scale: 1" = 400'