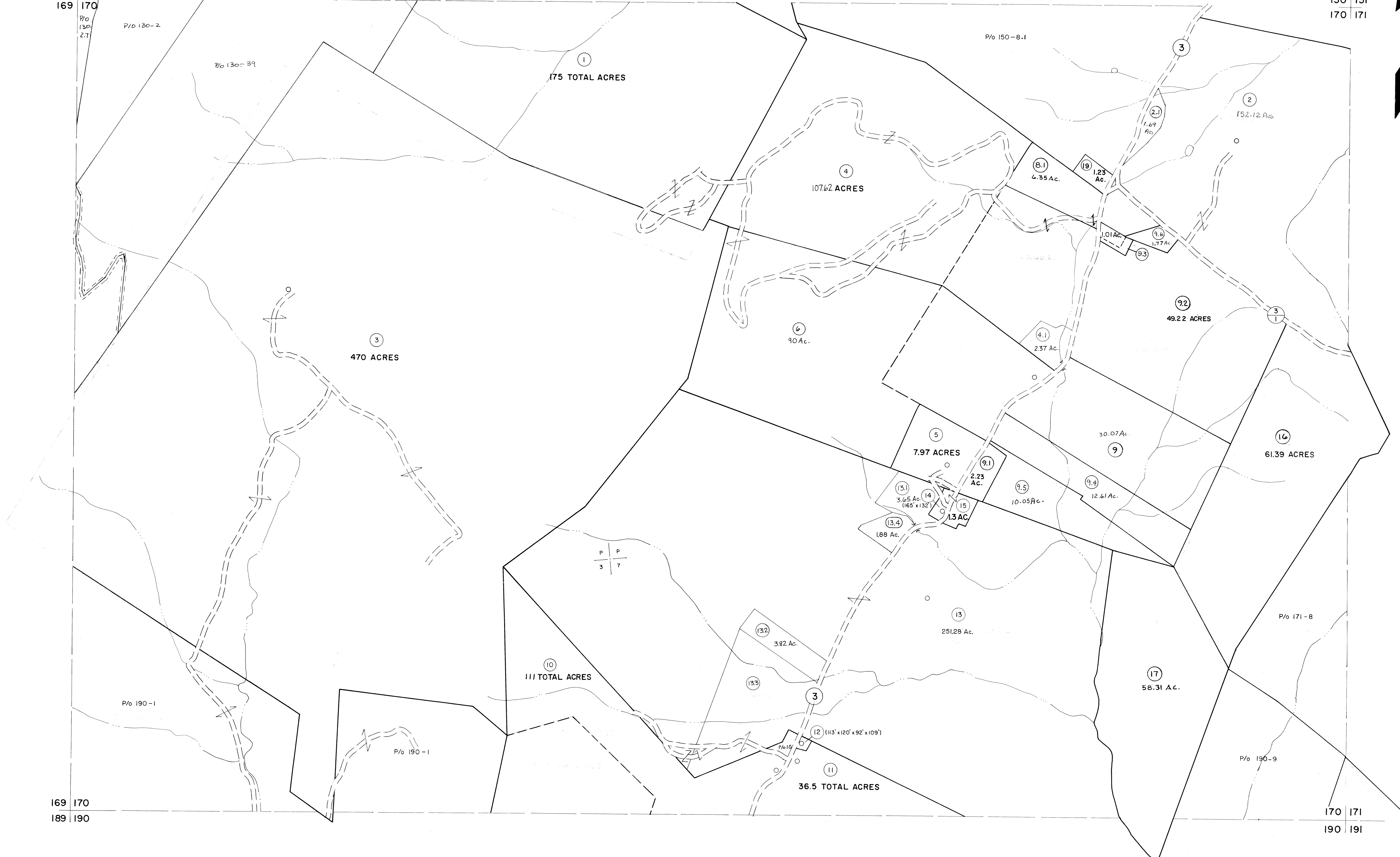


149 150
169 170

150 151
170 171

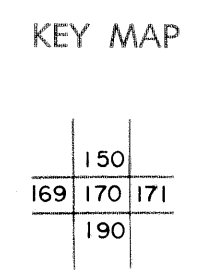


For Tax Purposes Only

Prepared by
MICHAEL BAKER, JR., INC.
Consulting Engineers
Rochester, Pennsylvania

Legend	
Property line	—
Edge of pavement or roadway	- - - -
Corporation line	- · - · -
District line	- - - -
County line	- - - -
Original lot line	- - - -
Deed lot number	(15)
Parcel or index number	(19)
Improvement	o
Railroad	+

Revisions	
1	5-22-63
2	5/23/73 MARSHALL
3	4-14-75 T.G.
4	12-29-80 Nancy Starcher
5	JULY, 1982 TRL
6	REV. TO 7-1-85 NCS
7	July, 1986 TRL
8	REV. TO 7-19-89 R.E.B.
9	EXCALIBUR GRAPHICS 7/93
10	Excavate 6/99
11	Excavate 7-04
12	
13	
14	
15	
16	
17	
18	
19	
20	
21	
22	
23	
24	



GRANT COUNTY
STATE OF WEST VIRGINIA
Office of Assessor

DISTRICT GRANT

SHEET NO: 170

Date, Aerial Photography: Nov., 1961 Date, Map: Dec., 1962
Photo No. Scale: 1" = 400'