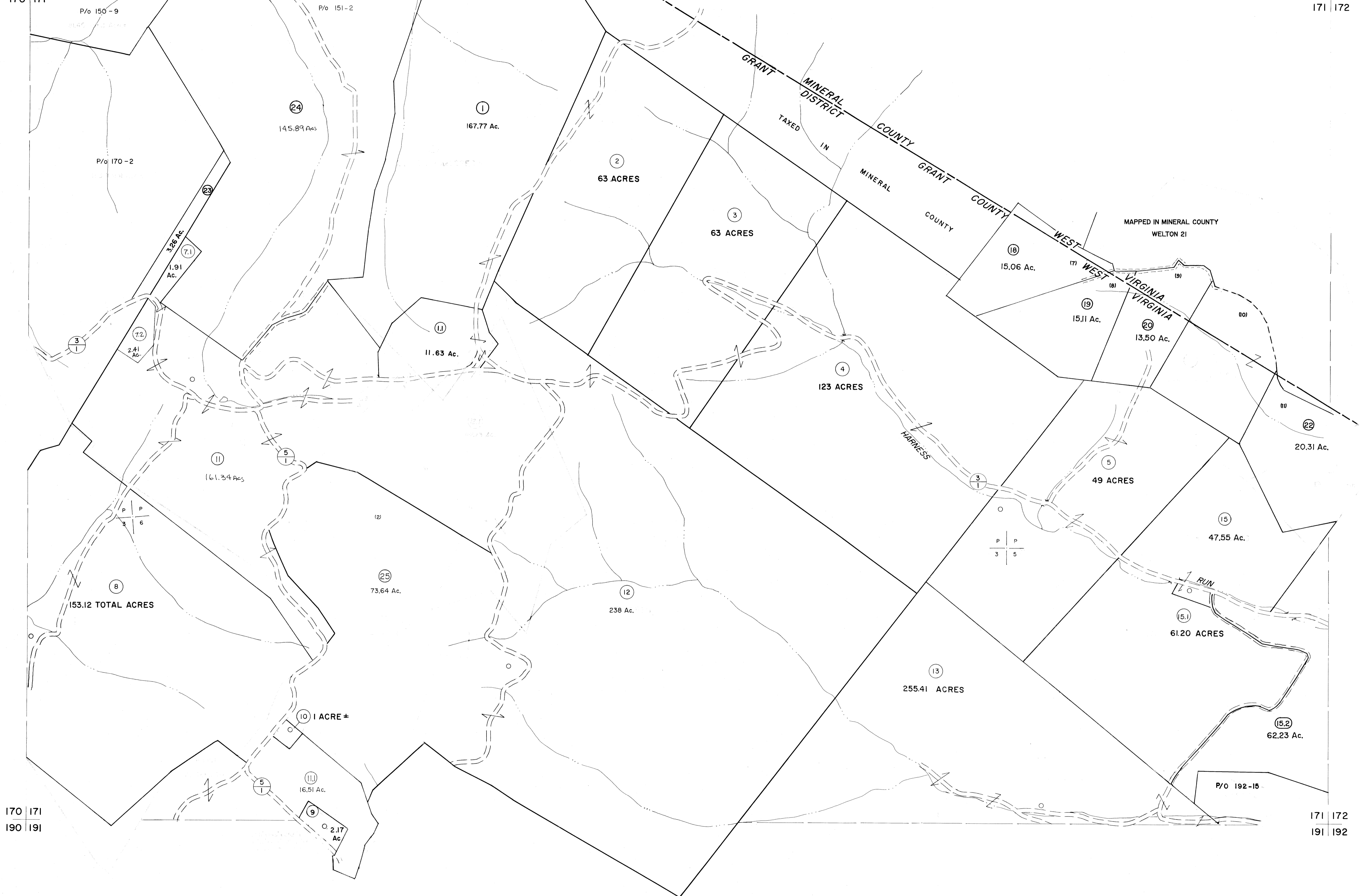


150 151  
170 171

151 172  
171 172



For Tax Purposes Only

Prepared by  
MICHAEL BAKER, JR., INC.  
Consulting Engineers  
Rochester, Pennsylvania

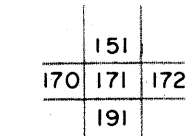
Legend

|                             |     |                        |      |
|-----------------------------|-----|------------------------|------|
| Property line               | ——— | Original lot line      | ---  |
| Edge of pavement or roadway | ——— | Dead lot number        | (15) |
| Corporation line            | ——— | Parcel or index number | (2)  |
| District line               | ——— | Improvement            | o    |
| County line                 | ——— | Railroad               | —+—  |

Revisions

|   |                   |                |    |                         |    |
|---|-------------------|----------------|----|-------------------------|----|
| 1 | 5/23/75           | MARSHALL       | 9  | EXCALIBUR GRAPHICS 7/92 | 17 |
| 2 | 12-29-80          | Nancy Starcher | 10 | EXCALIBUR GRAPHICS 7/93 | 18 |
| 3 | JULY 1982         | TRL            | 11 | Excavate                | 19 |
| 4 | REV. TO 7-1-85    | NCS            | 12 |                         | 20 |
| 5 | Revised to 7-1-87 | DR             | 13 |                         | 21 |
| 6 | Rev. to 7-19-89   | REB            | 14 |                         | 22 |
| 7 |                   |                | 15 |                         | 23 |
| 8 |                   |                | 16 |                         | 24 |

KEY MAP



GRANT COUNTY  
STATE OF WEST VIRGINIA  
Office of Assessor

DISTRICT

GRANT

SHEET NO: 171

Date, Aerial Photography: Nov., 1961  
Photo No: Date, Map: Dec., 1962  
Scale: 1" = 400'