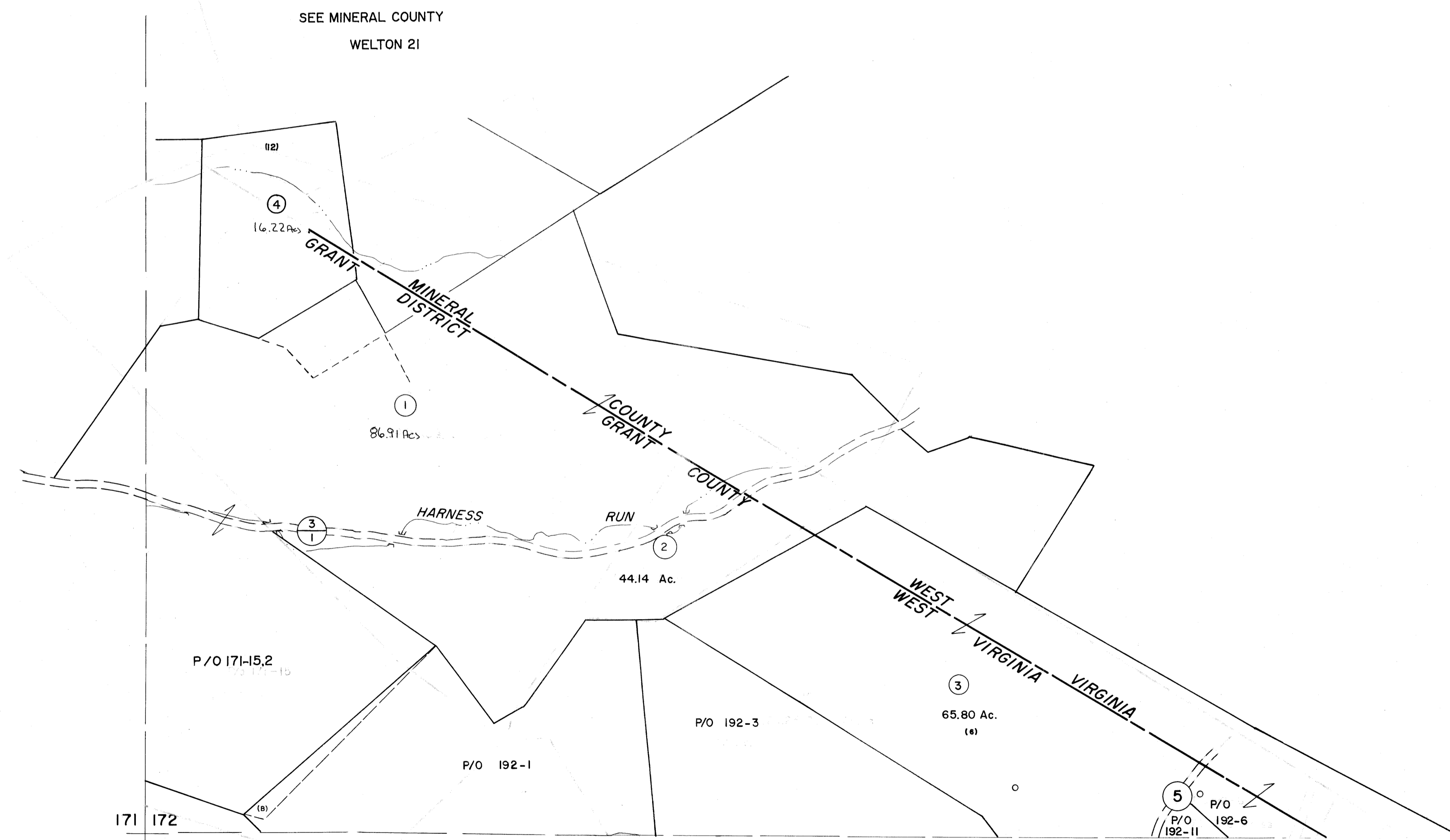


151 |
171 | 172

172 |
192 |



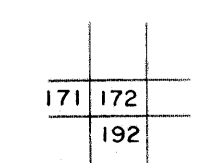
For Tax Purposes Only

Prepared by
MICHAEL BAKER, JR., INC.
Consulting Engineers
Rochester, Pennsylvania

Legend	
Property line	—————
Edge of pavement or roadway	- - - - -
Corporation line	- · - · -
District line	- - - - -
County line	- - - - -
Original lot line	—————
Deed lot number	(15)
Parcel or index number	(29)
Improvement	o
Railroad	—————

Revisions			
1	4-14-75	T.G.	9
2	JULY, 1982	TRL	10
3	Revised to 7-1-87-22		11
4	REV. TO 7-19-89	REB.	12
5	EXCALIBUR GRAPHICS 7/91		13
6	EXCALIBUR	6/99	14
7			15
8			16

KEY MAP



GRANT COUNTY
STATE OF WEST VIRGINIA
Office of Assessor

DISTRICT **GRANT**

SHEET NO: 172

Date, Aerial Photography: Nov., 1961 Date, Map: Dec., 1962
Photo No: Scale: 1" = 400'