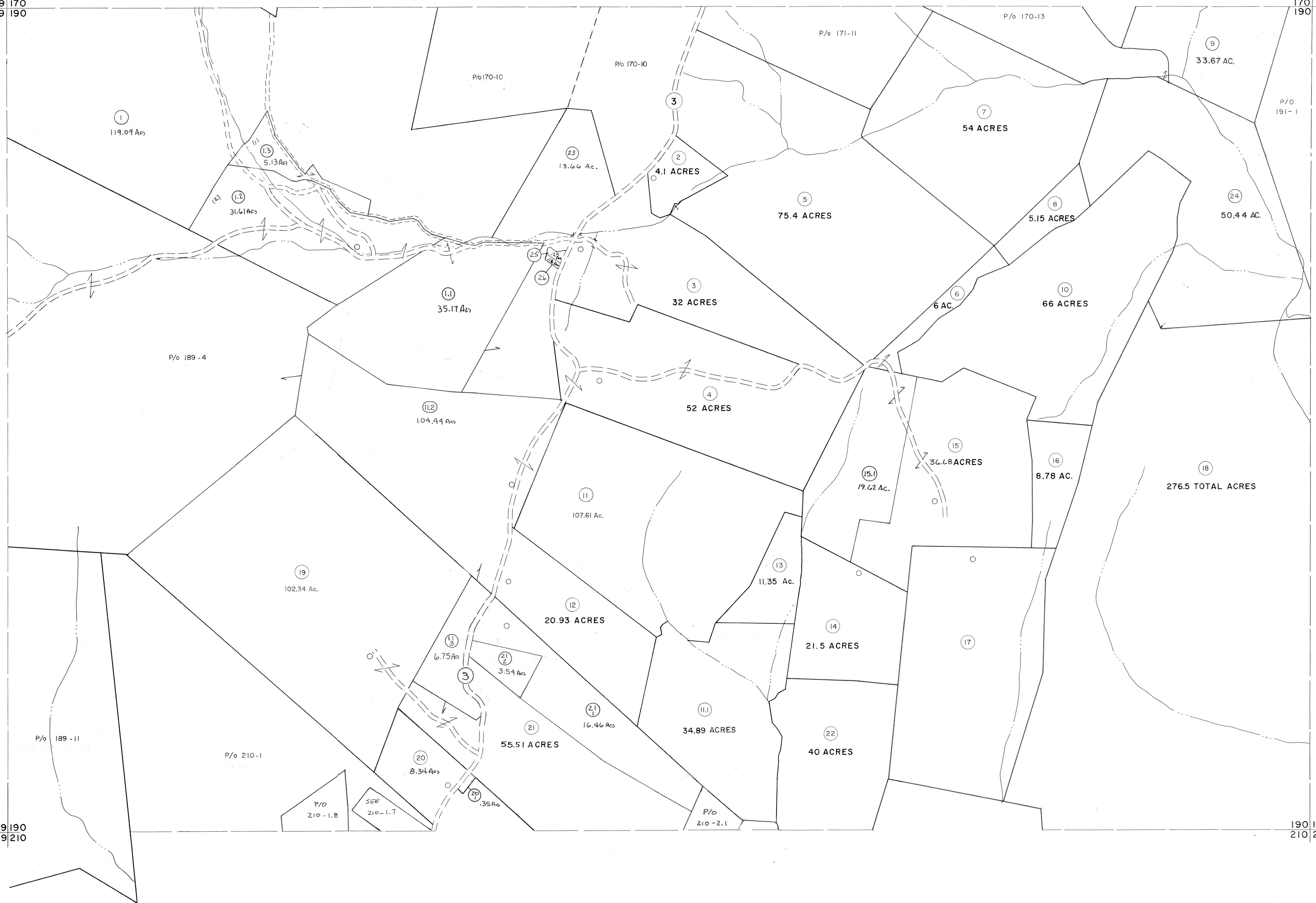


169 170  
189 190

170 171  
190 191

189 190  
209 210

190 191  
210 211



**For Tax Purposes Only**

Prepared by  
**MICHAEL BAKER, JR., INC.**  
Consulting Engineers  
Rochester, Pennsylvania

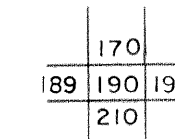
**Legend**

Property line	—————	Original lot line	-----
Edge of pavement or roadway	-----	Deed lot number	(15)
Corporation line	-----	Parcel or index number	(29)
District line	-----	Improvement	o
County line	-----	Railroad	+

**Revisions**

1	5-22-63	9	REV. TO 7-19-89	REB	17
2	5/23/73 MARSHALL	10	EXCHANGE	1/99	18
3	4-14-75 T.G.	11	EXCHANGE	6/99	19
4	11-19-76 BH	12	EXCHANGE	7-04	20
5	Revised to 7-81	13	EXCHANGE	07/07	21
6	JULY 1982	14	TRL		22
7	REV. TO 7-1-83	15	NCS		23
8	Revised to 7-1-85	16			24

**KEY MAP**



**GRANT COUNTY**  
STATE OF WEST VIRGINIA  
Office of Assessor

DISTRICT

**GRANT**

**SHEET NO: 190**

Date, Aerial Photography: Nov., 1961  
Photo No:

Date, Map: Dec., 1962  
Scale: 1" = 400'