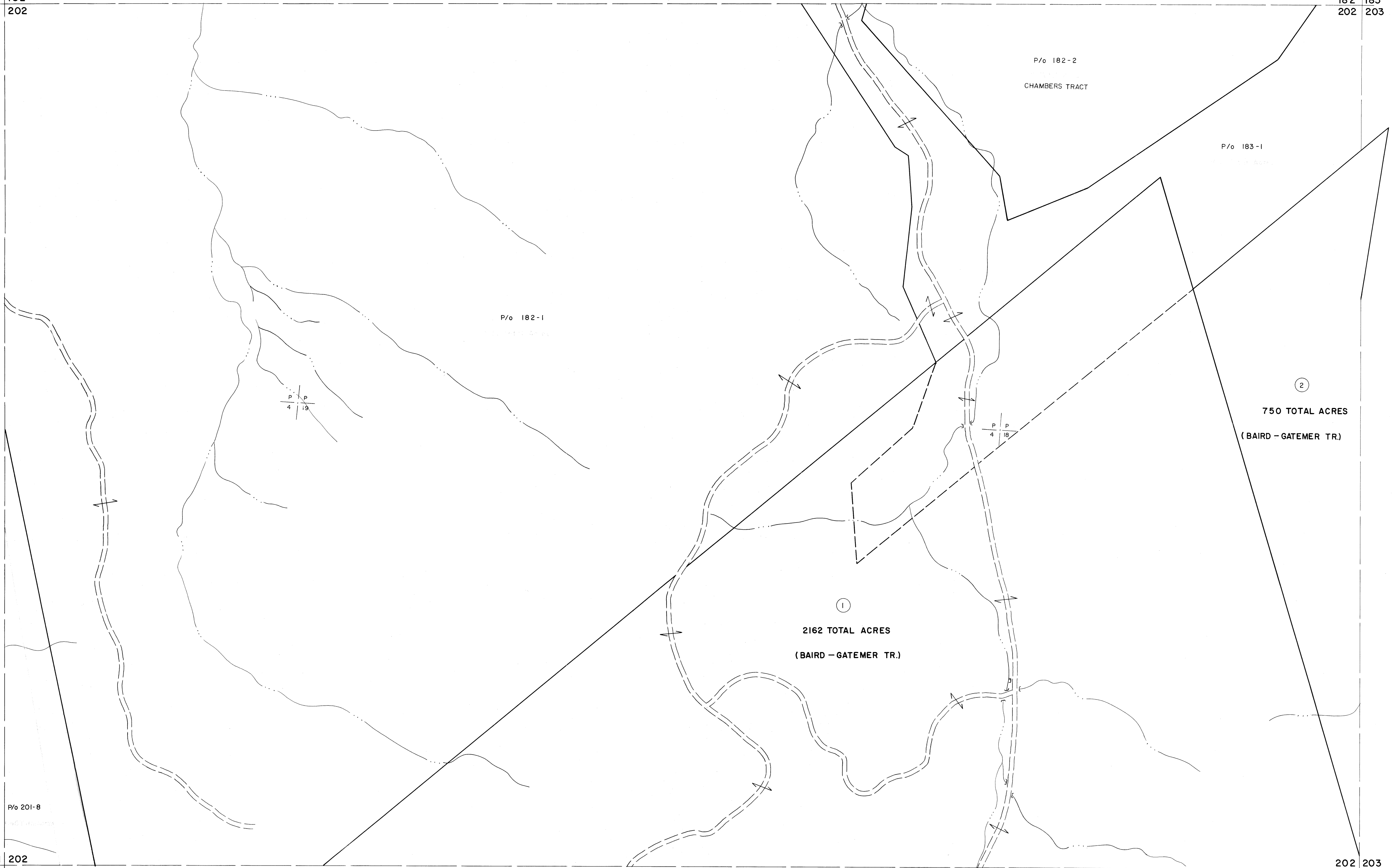


181 182  
201 202

182 183  
202 203

201 202  
221 222

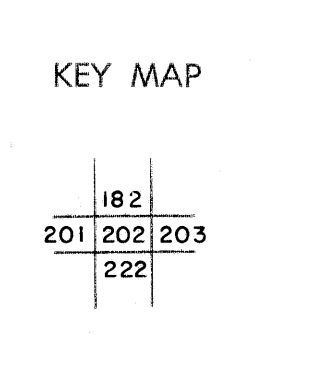
202 203  
222 223



For Tax Purposes Only  
 Prepared by  
**MICHAEL BAKER, JR., INC.**  
 Consulting Engineers  
 Rochester, Pennsylvania

Legend	
Property line	—————
Edge of pavement or roadway	———
Corporation line	-----
District line	-----
County line	-----
Original lot line	-----
Deed lot number	(15)
Parcel or index number	(22)
Improvement	o
Railroad	+++++

Revisions	
1	Revised to 7-19-89
2	JULY, 1982 TRL
3	Revised to 7-1-87
4	REV. TO 7-19-89 R.E.B.
5	
6	
7	
8	



**GRANT COUNTY**  
 STATE OF WEST VIRGINIA  
 Office of Assessor

DISTRICT **UNION**  
 SHEET NO: 202  
 Date, Aerial Photography: Nov., 1961 Date, Map: Dec., 1962  
 Photo No. Scale: 1" = 400'