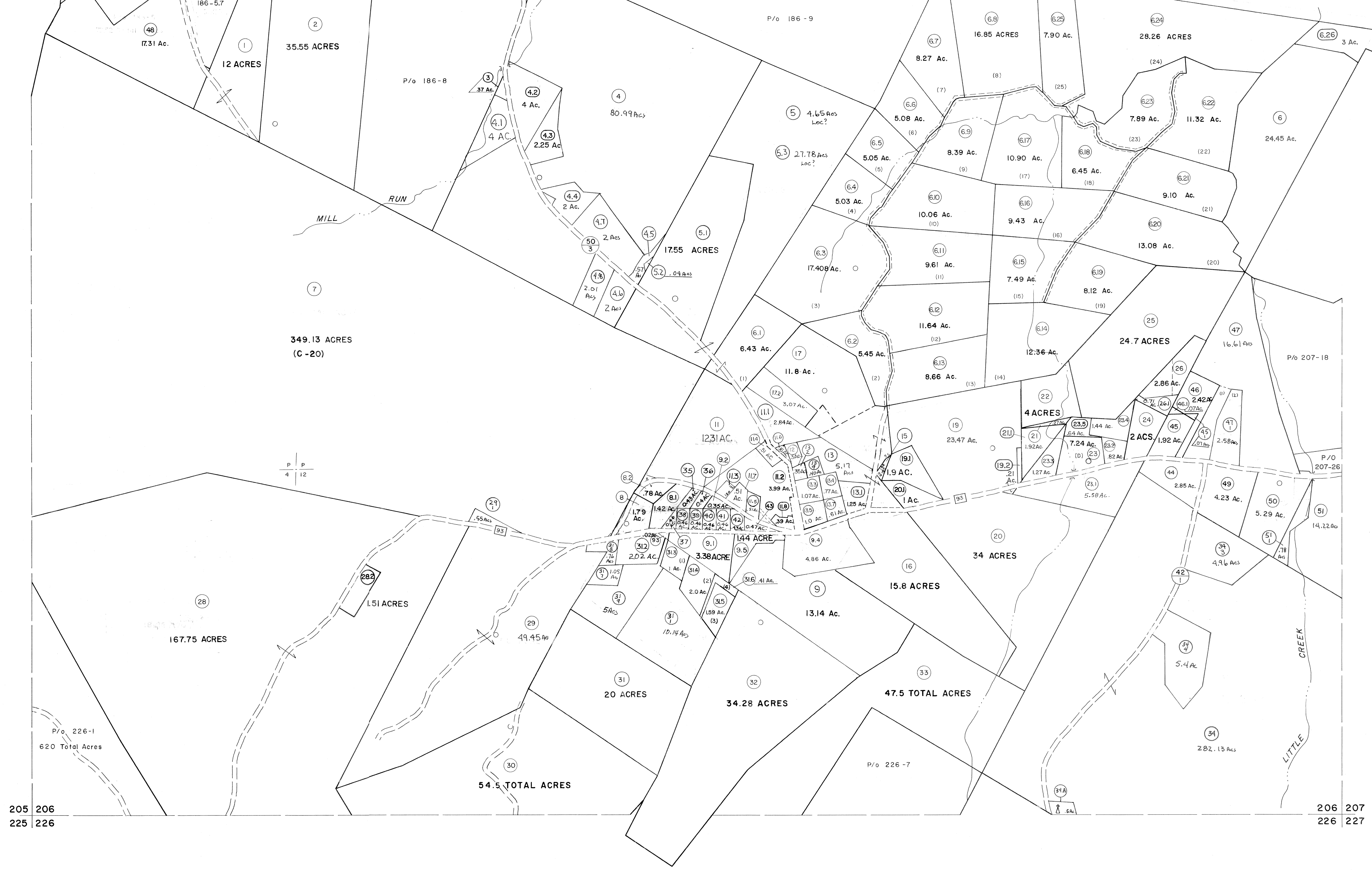


185 186
205 206

186 187
206 207



205 206
225 226

206 207
226 227

For Tax Purposes Only

Prepared by
MICHAEL BAKER, JR., INC.
Consulting Engineers
Rochester, Pennsylvania

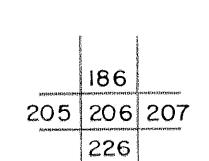
Legend

Property line	—	Original lot line	- - - - -
Edge of pavement or roadway	—	Deed lot number	(15)
Corporation line	—	Parcel or index number	(99)
District line	—	Improvement	o
County line	—	Railroad	—

Revisions

1	5-22-63	9	July, 1986	TRL	17	EXCALIBUR 7-04
2	5-22-73 - D.M.V.	10	Revised to 7-1-87	EXCALIBUR	18	EXCALIBUR 7/05
3	3-4-75 T.G.	11	REV. TO 7-19-89	R.E.B.	19	EXCALIBUR 8/107
4	Revised to 7-81	12	EXCALIBUR GRAPHICS 7/91		20	
5	JULY, 1982	13	EXCALIBUR GRAPHICS 7/92		21	
6	REV. TO 7-1-83	14	EXCALIBUR GRAPHICS 7/93		22	
7	July 1984	15	EXCALIBUR 6/99		23	
8	Revised to 7-1-85	16	EXCALIBUR 12-01		24	

KEY MAP



GRANT COUNTY
STATE OF WEST VIRGINIA
Office of Assessor

DISTRICT
UNION

SHEET NO: 206

Date, Aerial Photography: Nov., 1961
Photo No: Date, Map: Dec. 1962
Scale: 1" = 400'