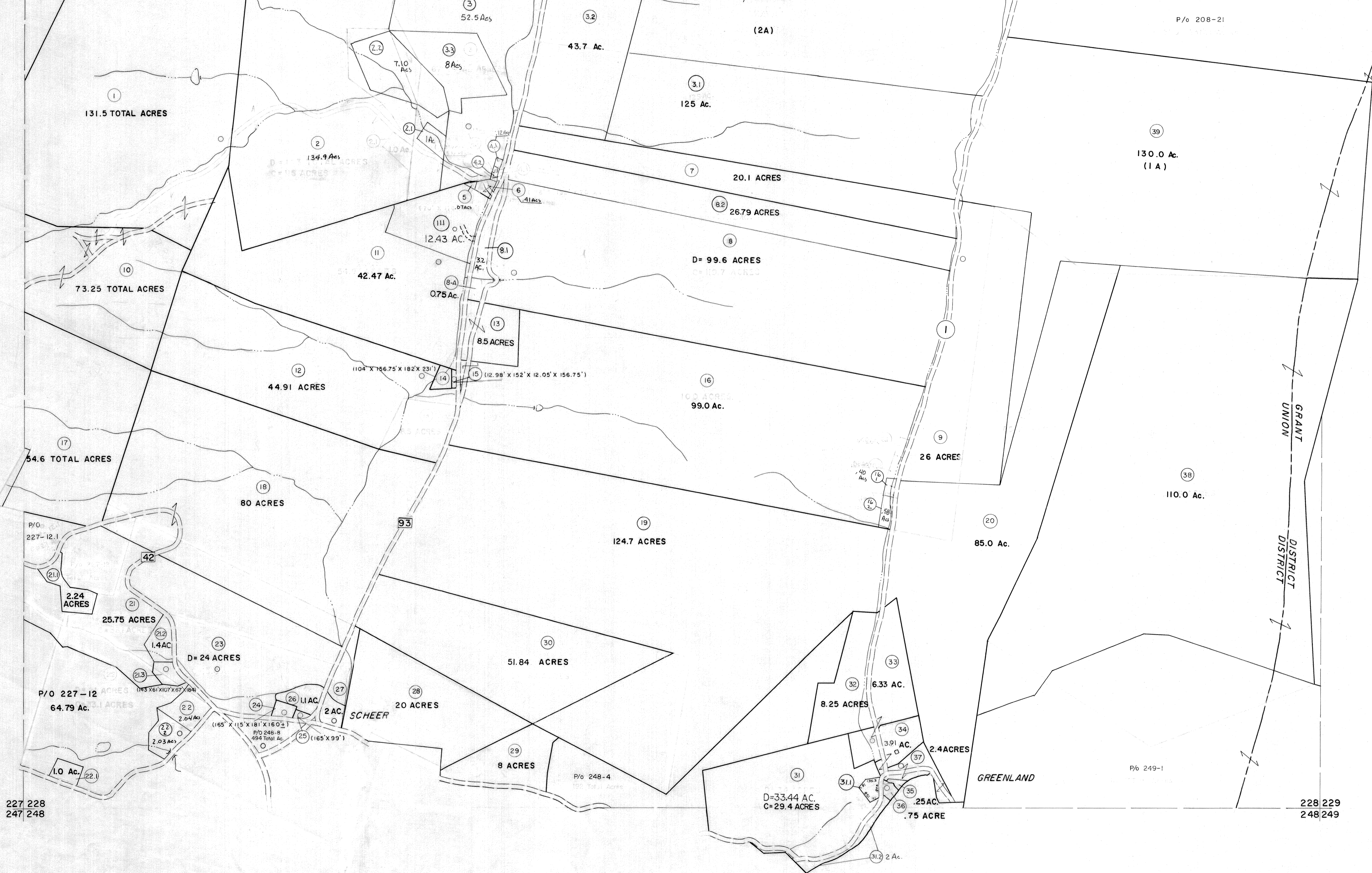


207 208
227 228

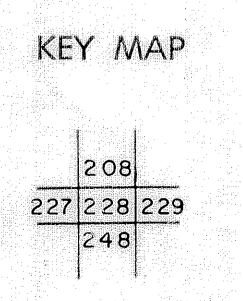
208 209
228 229



For Tax Purposes Only
 Prepared by
MICHAEL BAKER, JR., INC.
 Consulting Engineers
 Rochester, Pennsylvania

Legend	
Property line	Original lot line
Edge of pavement or roadway	Deed lot number
Corporation line	Parcel or index number
District line	Improvement
County line	Railroad

Revisions			
1	5-23-73	D.W.V.	9
2	MAR 75	DAM	10
3	REVISED TO 7-81	DL	11
4	JULY 1982	TRL	12
5	REV TO 7-1-83	NCS	13
6	REVISED TO 7-85	DL	14
7	REVISED TO 7-85	DL	15
8	EXCALIBUR	6/99	16
9	EXCALIBUR	7/03	17
10	EXCALIBUR	7-04	18
11	EXCALIBUR	07/07	19
12			20
13			21
14			22
15			23
16			24



GRANT COUNTY
 STATE OF WEST VIRGINIA
 Office of Assessor

DISTRICT **UNION**
 SHEET NO: 228
 Date, Aerial Photography: November, 1961 Date, Map: Dec, 1962
 Photo No: Scale: 1" = 400'