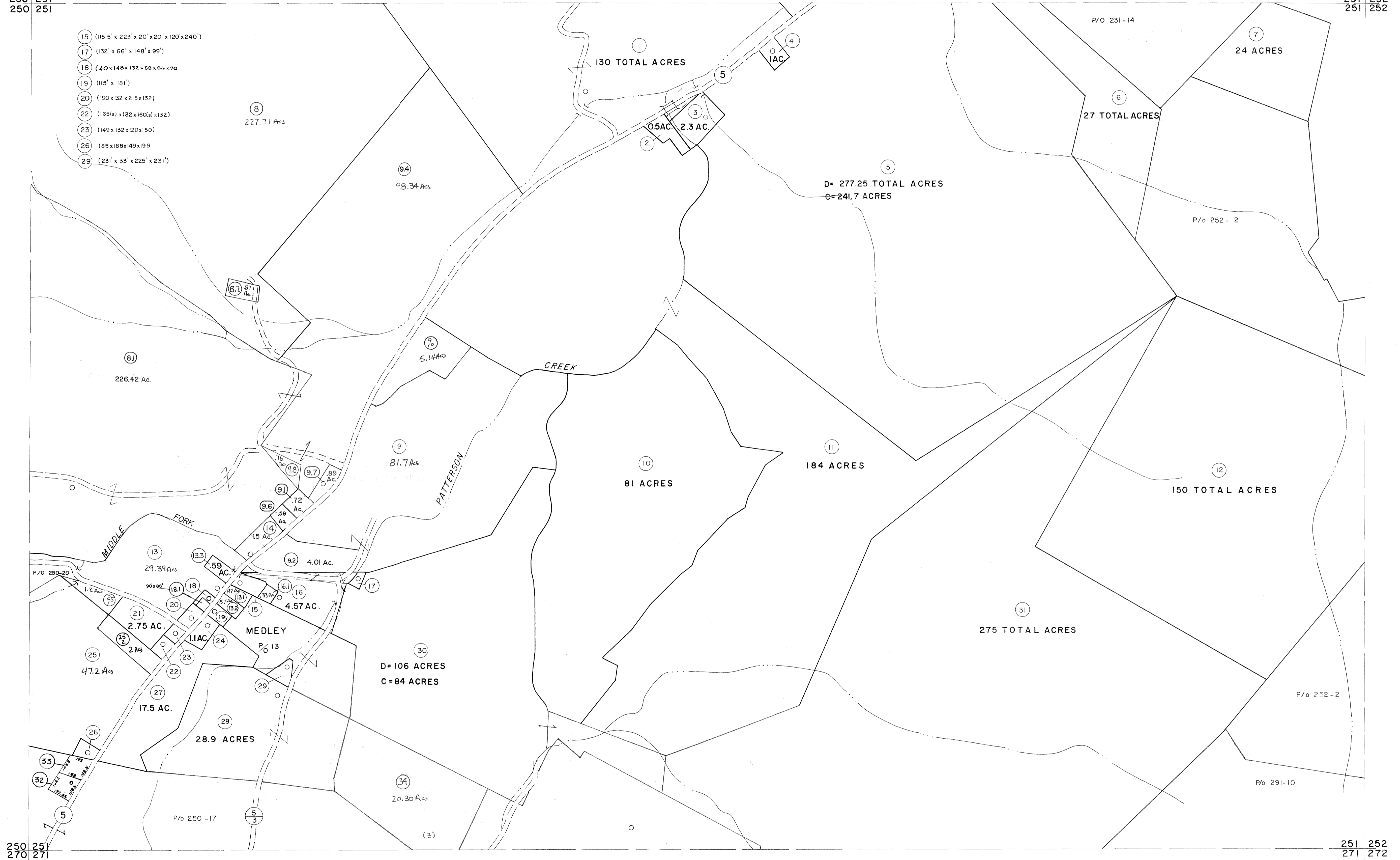


230 231
250 251

231 232
251 252

- 15 (115.5' x 223' x 20' x 20' x 120' x 240')
- 17 (132' x 66' x 148' x 99')
- 18 (40' x 148' x 132' x 58' x 46' x 70')
- 19 (115' x 181')
- 20 (190' x 132' x 215' x 132')
- 22 (165' x 132' x 160' x 132')
- 23 (149' x 132' x 120' x 150')
- 26 (85' x 188' x 149' x 19.9')
- 29 (231' x 33' x 225' x 231')



250 251
270 271

251 252
271 272

For Tax Purposes Only

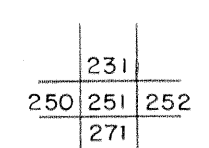
Prepared by
MICHAEL BAKER, JR., INC.
Consulting Engineers
Rochester, Pennsylvania

Legend

- Property line
- Edge of pavement or roadway
- Corporation line
- District line
- County line
- Original lot line
- Deed lot number
- Parcel or index number
- Improvement
- Railroad

Revisions			
1	5/23/73	MARSHALL	9 July, 1986
2	4-14-75	T. G.	10
3	12-29-80		11
4	Revised to 7-1-81		12
5	JULY, 1982	TRL	13
6	REV. TO 7-1-83	NCS	14
7	July 1984		15
8	Revised to 7-1-85		16
			17
			18
			19
			20
			21
			22
			23
			24

KEY MAP



GRANT COUNTY
STATE OF WEST VIRGINIA
Office of Assessor

DISTRICT
GRANT

SHEET NO: 251

Date, Aerial Photography: Nov, 1961
Photo No:
Date, Map: Dec, 1962
Scale: 1" = 400'