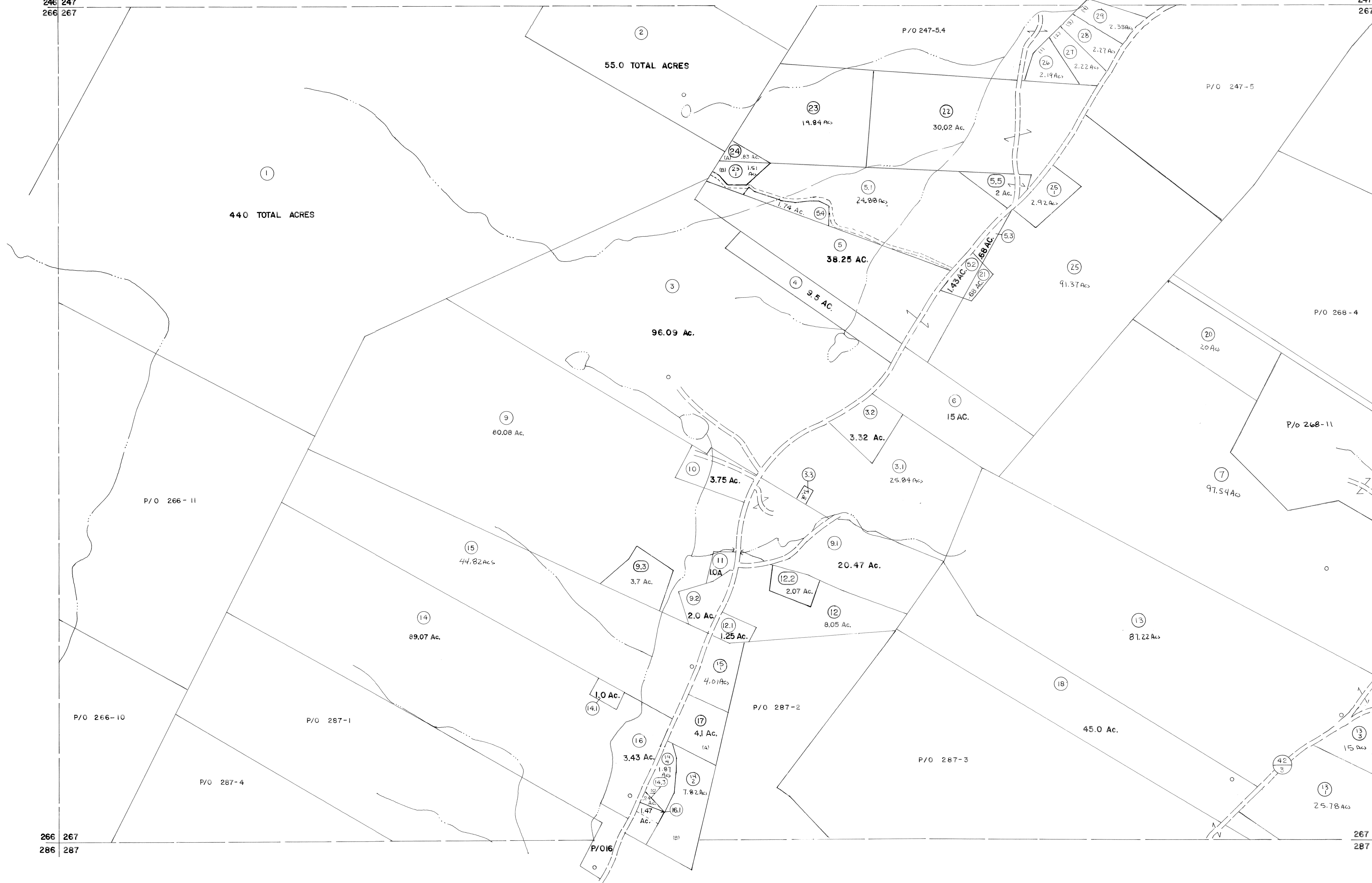


246 247
266 267

266 267
286 287

247 248
267 268

267 268
287 288



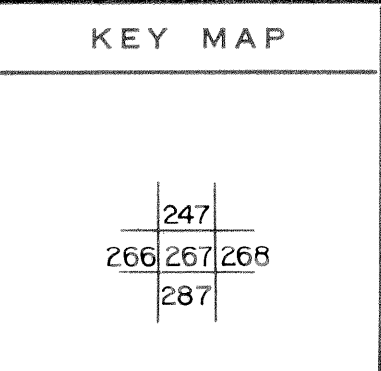
For Tax Purposes Only
Prepared by
LOCAL GOVERNMENT RELATIONS DIV.
STATE TAX COMMISSIONER
CHARLESTON, W.VA.

LEGEND	
Property line	Original lot line
Edge of pavement or roadway	Deed lot number
Corporation line	Parcel or index number
District line	Improvement
County line	Railroad

REVISIONS	
1	EXCALIBUR GRAPHICS 7/93
2	EXCALIBUR 6/99
3	EXCALIBUR 7/03
4	EXCALIBUR 7/07
5	JULY 1995 TRL
6	EXCALIBUR 7/99
7	EXCALIBUR GRAPHICS 7/91
8	EXCALIBUR GRAPHICS 7/92

RESTRICTION

All tax maps created under the provisions of reappraisal legislation are the property of the State of West Virginia and the reproduction, copying, distribution or sale of such tax maps or any copies thereof without the written permission of the State Tax Commissioner is prohibited by law.



GRANT COUNTY
STATE OF WEST VIRGINIA
Office of Assessor

UNION
SHEET NO. 267
Date, Aerial Photography: NOVEMBER, 1961 Date, Map: DEC., 1962
Photo No. Scale: 1" = 400'