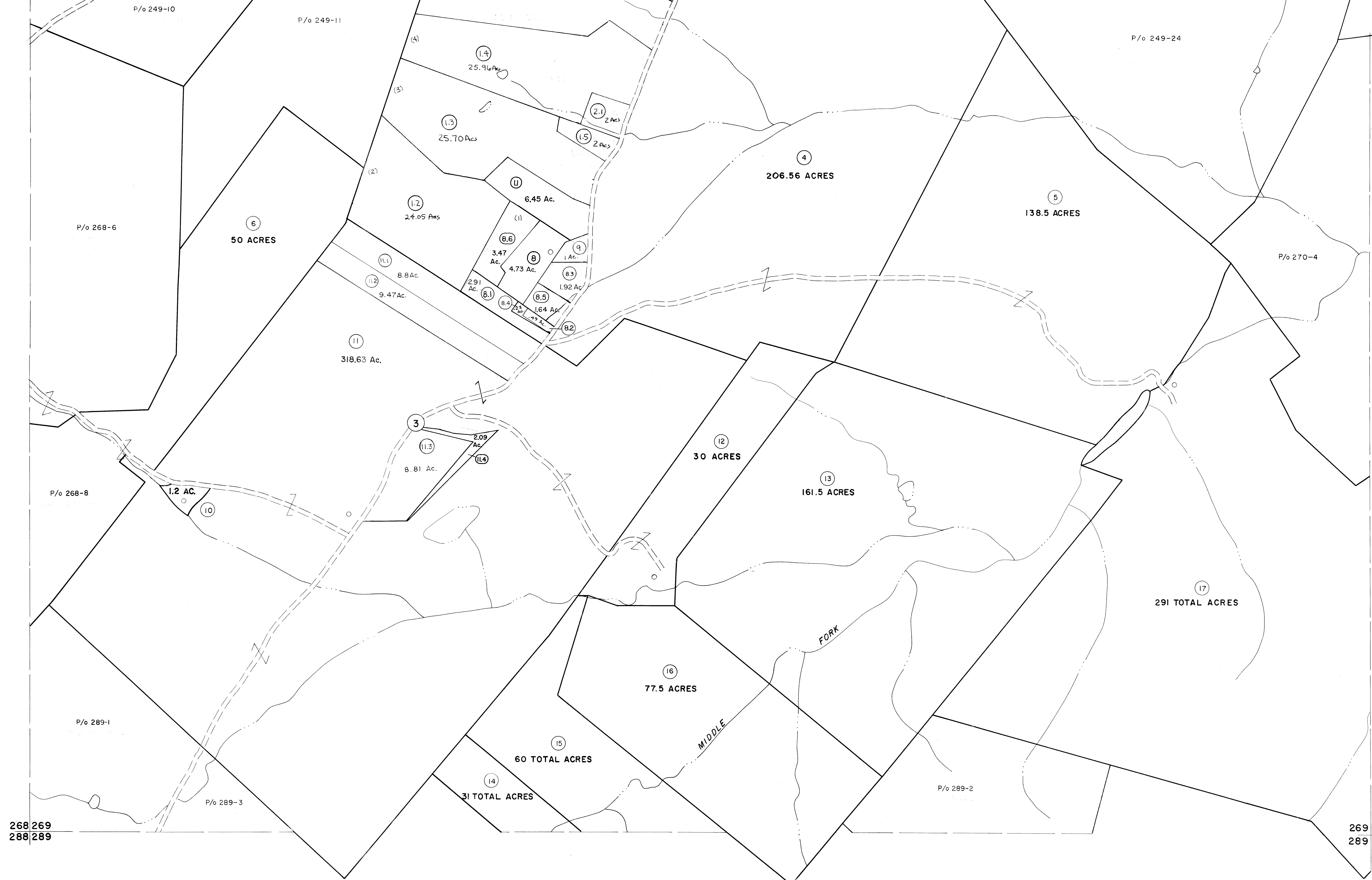


248 249
268 269

249 250
270 270



For Tax Purposes Only

Prepared by
MICHAEL BAKER, JR., INC.
Consulting Engineers
Rochester, Pennsylvania

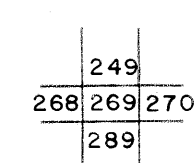
Legend

Property line	—	Original lot line	- - - - -
Edge of pavement or roadway	— · — · —	Deed lot number	(15)
Corporation line	- - - - -	Parcel or index number	(19)
District line	- · - · -	Improvement	o
County line	- - - - -	Railroad	— x —

Revisions

1	5/23/78	MARSHALL	9	Revised to 7-1-85	17
2	4-14-75	T. G.	10	Revised to 7-1-85	18
3	9-1-76	T. G.	11	EXCALIBUR GRAPHICS 7/93	19
4	11/22/74	20	12	EXCALIBUR GRAPHICS 7/93	20
5	12-29-80	21	13	EXCALIBUR 1/89	21
6	Revised to 7-81	22	14	EXCALIBUR 6/99	22
7	JULY, 1982	23	15		23
8	REV. TO 7-1-83	24	16		24

KEY MAP



GRANT COUNTY
STATE OF WEST VIRGINIA
Office of Assessor

DISTRICT

GRANT

SHEET NO: 269

Date, Aerial Photography: November, 1961 Date, Map: Dec., 1962
Photo No: Scale: 1" = 400'