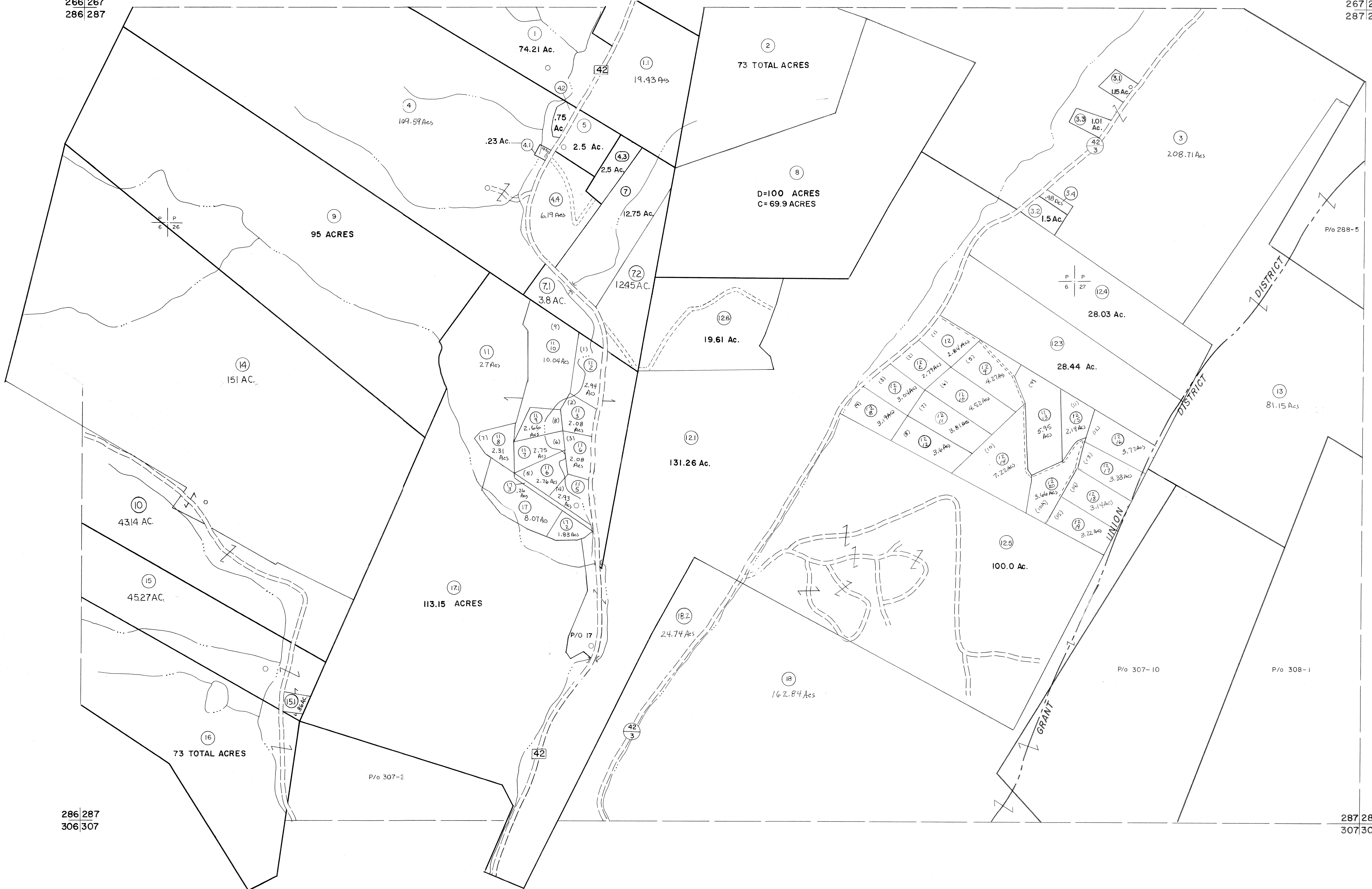


266|267
286|287

267|268
287|288



For Tax Purposes Only

Prepared by
MICHAEL BAKER, JR., INC.
Consulting Engineers
Rochester, Pennsylvania

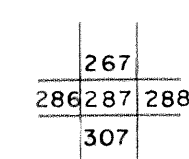
Legend

Property line	—	Original lot line	—
Edge of pavement or roadway	—	Deed lot number	(15)
Corporation line	—	Parcel or index number	(22)
District line	—	Improvement	○
County line	—	Railroad	—

Revisions

1	5-29-73 D.W.V.	9	EXCALIBUR 1199	17	
2	3-4-75 DAE	10	EXCALIBUR 1201	18	
3	Revised to 7-81 TR	11	EXCALIBUR 703	19	
4	JULY, 1982 TR	12	EXCALIBUR 704	20	
5	July, 1984 TR	13		21	
6	July, 1986 TR	14		22	
7	Revised to 7-98 TR	15		23	
8	EXCALIBUR GRAPHICS 7/91	16		24	

KEY MAP



GRANT COUNTY
STATE OF WEST VIRGINIA
Office of Assessor

DISTRICT UNION GRANT

SHEET NO: 287

Date, Aerial Photography: November, 1961 Date, Map: Dec., 1962
Photo No: Scale: 1" = 400'