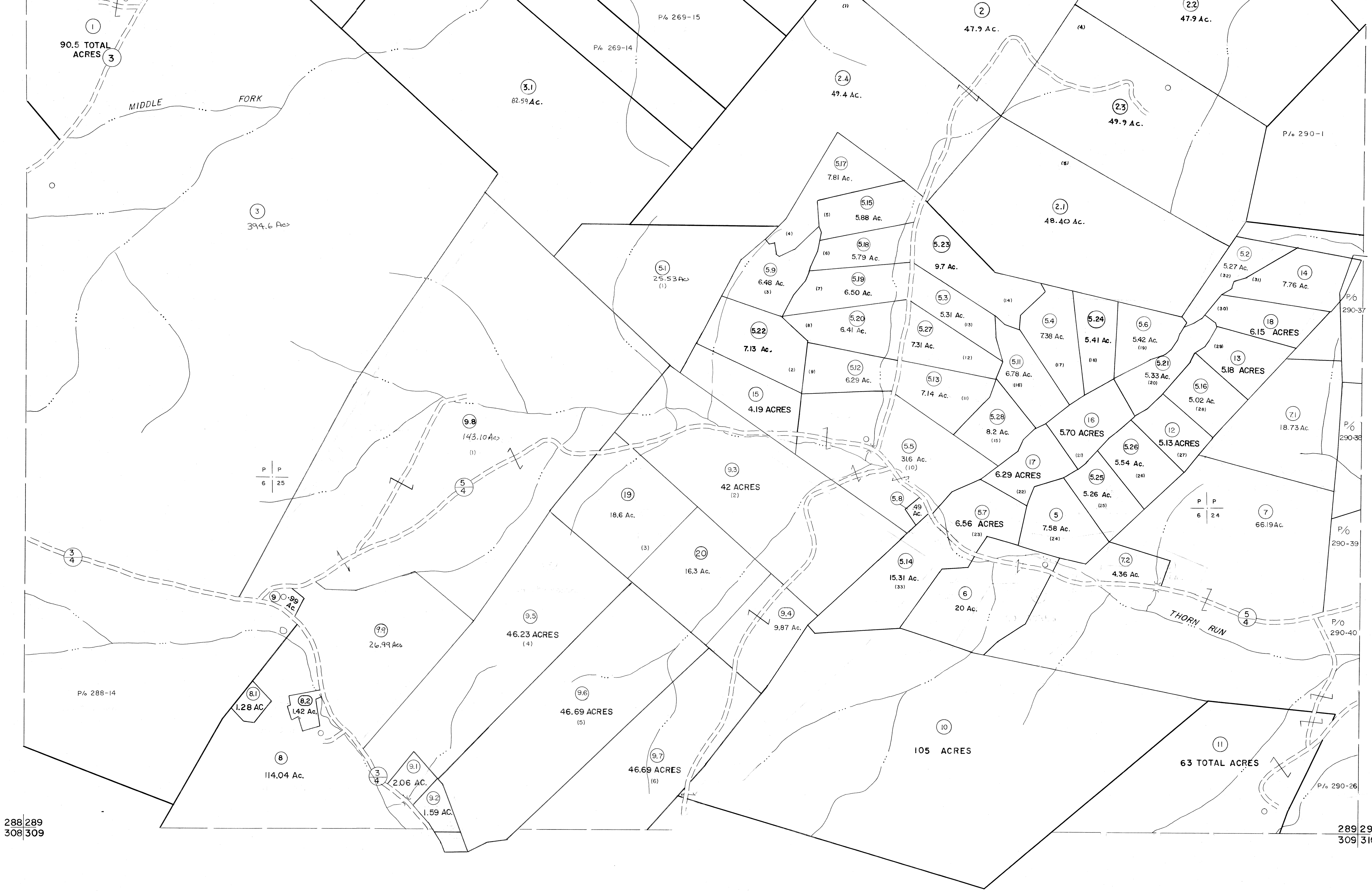


268 269  
288 289

269 270  
289 290

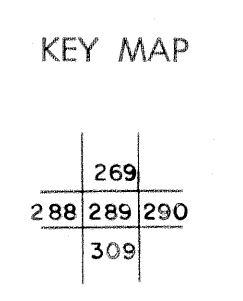


For Tax Purposes Only

Prepared by  
MICHAEL BAKER, JR., INC.  
Consulting Engineers  
Rochester, Pennsylvania

Legend	
Property line	—————
Edge of pavement or roadway	—————
Corporation line	—————
District line	—————
County line	—————
Original lot line	-----
Dead lot number	(15)
Parcel or index number	(20)
Improvement	o
Railroad	—+—+—+—

Revisions			
1	5/24/73	MARSHALL	9 July, 1966
2	4-14-75	T. G.	Revised to 7-1-81
3	12-31-80	DF	Revised to 7-19-89
4	Revised to 7-81	DF	EXCALIBUR GRAPHICS 7/91
5	JULY 1982	TRL	Excavate 1/99
6	REV. TO 7-1-83	NCS	Excavate 7/05
7	July 1984	DF	
8	Revised to 7-1-85	DF	



**GRANT COUNTY**  
STATE OF WEST VIRGINIA  
Office of Assessor

DISTRICT **GRANT**

**SHEET NO: 289**

Date, Aerial Photography: Nov., 1961 Date, Map: Dec., 1962  
Photo No: Scale: 1" = 400'