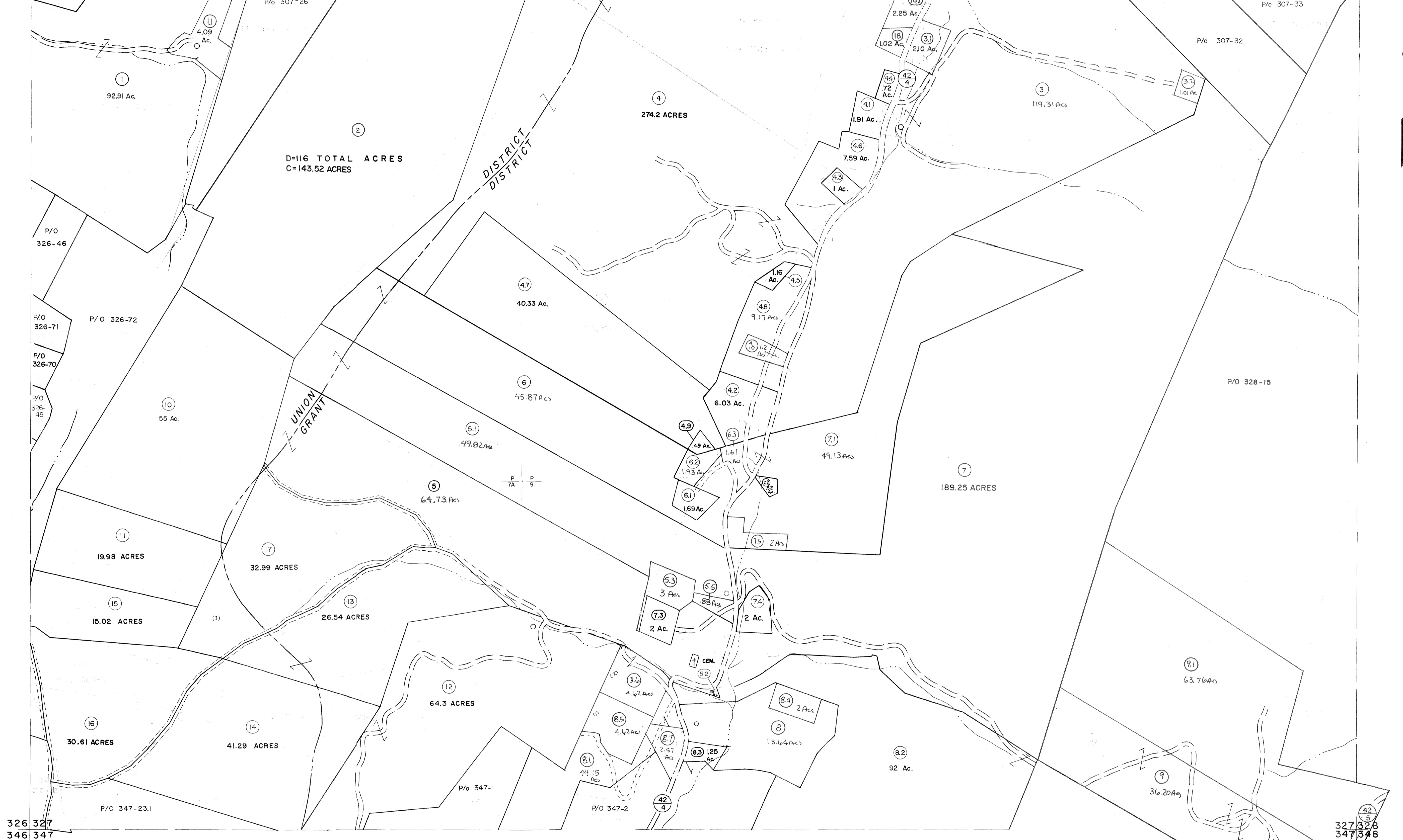


306 307  
326 327

307 308  
327 328



For Tax Purposes Only

Prepared by  
MICHAEL BAKER, JR., INC.  
Consulting Engineers  
Rochester, Pennsylvania

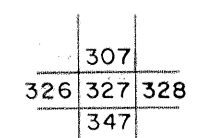
Legend

Property line	—	Original lot line	- - - - -
Edge of pavement or roadway	— · — · —	Deed lot number	(15)
Corporation line	— · — · —	Parcel or index number	(99)
District line	— · — · —	Improvement	o
County line	— · — · —	Railroad	+

Revisions

1	5-18-73	D.P.R.	9	July, 1986	TRL	17	Excavator	01/07
2	4-15-75	T.G.	10	Revised to 7-1-87	REB	18		
3	9-1-76	T.G.	11	REV. TO 7-19-89	REB	19		
4	12-30-80	TRL	12	EXCALIBUR GRAPHICS 7/91	20			
5	JULY, 1981	TRL	13	EXCALIBUR GRAPHICS 7/92	21			
6	JULY, 1982	TRL	14	Excavator 11/89	22			
7	REV. TO 7-1-83	NCS	15	Excavator 12/01	23			
8	1/1/85	REB	16	Excavator 7/83	24			

KEY MAP



GRANT COUNTY  
STATE OF WEST VIRGINIA  
Office of Assessor

DISTRICT

GRANT-UNION

SHEET NO: 327

Date, Aerial Photography: Nov., 1961 Date, Map: Dec, 1962  
Photo No: Scale: 1" = 400'