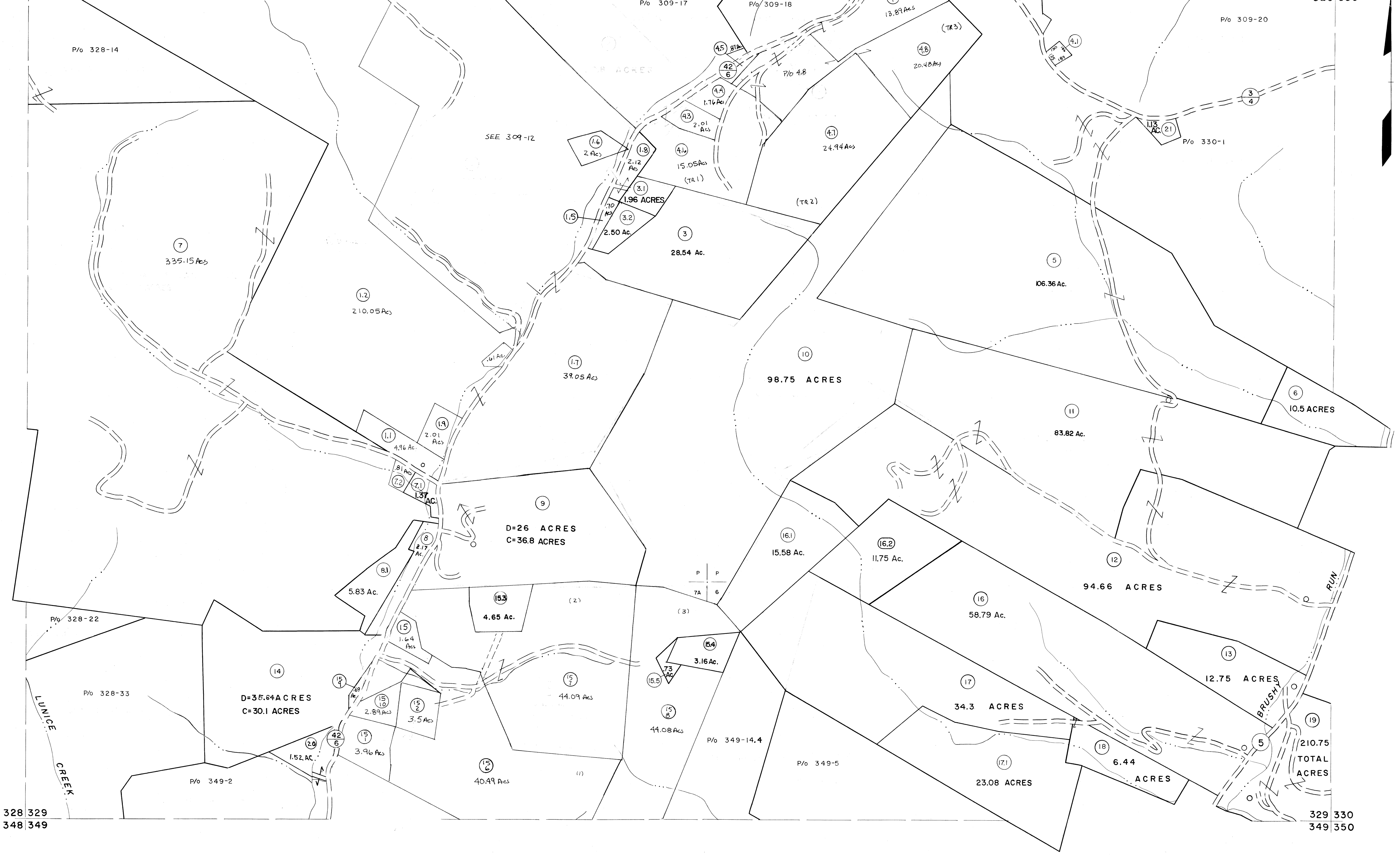


308 309
328 329

309 310
329 330



328 329
348 349

329 330
349 350

For Tax Purposes Only

Prepared by
MICHAEL BAKER, JR., INC.
Consulting Engineers
Rochester, Pennsylvania

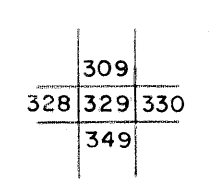
Legend

Property line	—	Original lot line	- - - - -
Edge of pavement or roadway	— — — — —	Deed lot number	(15)
Corporation line	— · — · —	Parcel or index number	(19)
District line	— · — · —	Improvement	o
County line	— · — · —	Railroad	— + — + —

Revisions

1	5-18-73	DAE	9	July 1984	TR	17	EXCALIBUR	7/03
2	4-15-75	T.G.	10	July 1985	TR	18	EXCALIBUR	7-04
3	9-2-76	T.G.	11	July 1986	TRL	19		
4	11-22-76	J.O.	12	REV. TO 7-19-89	R.E.B.	20		
5	1-5-81	TRL	13	EXCALIBUR GRAPHICS	7/91	21		
6	JULY, 1981	TRL	14	EXCALIBUR	1/99	22		
7	JULY, 1982	TRL	15	EXCALIBUR	6/99	23		
8	REV. TO 7-1-83	NCS	16	EXCALIBUR	12/01	24		

KEY MAP



GRANT COUNTY

STATE OF WEST VIRGINIA

Office of Assessor

DISTRICT

GRANT

SHEET NO: 329

Date, Aerial Photography: Nov., 1961 Date, Map: Dec, 1962
Photo No: Scale: 1" = 400'