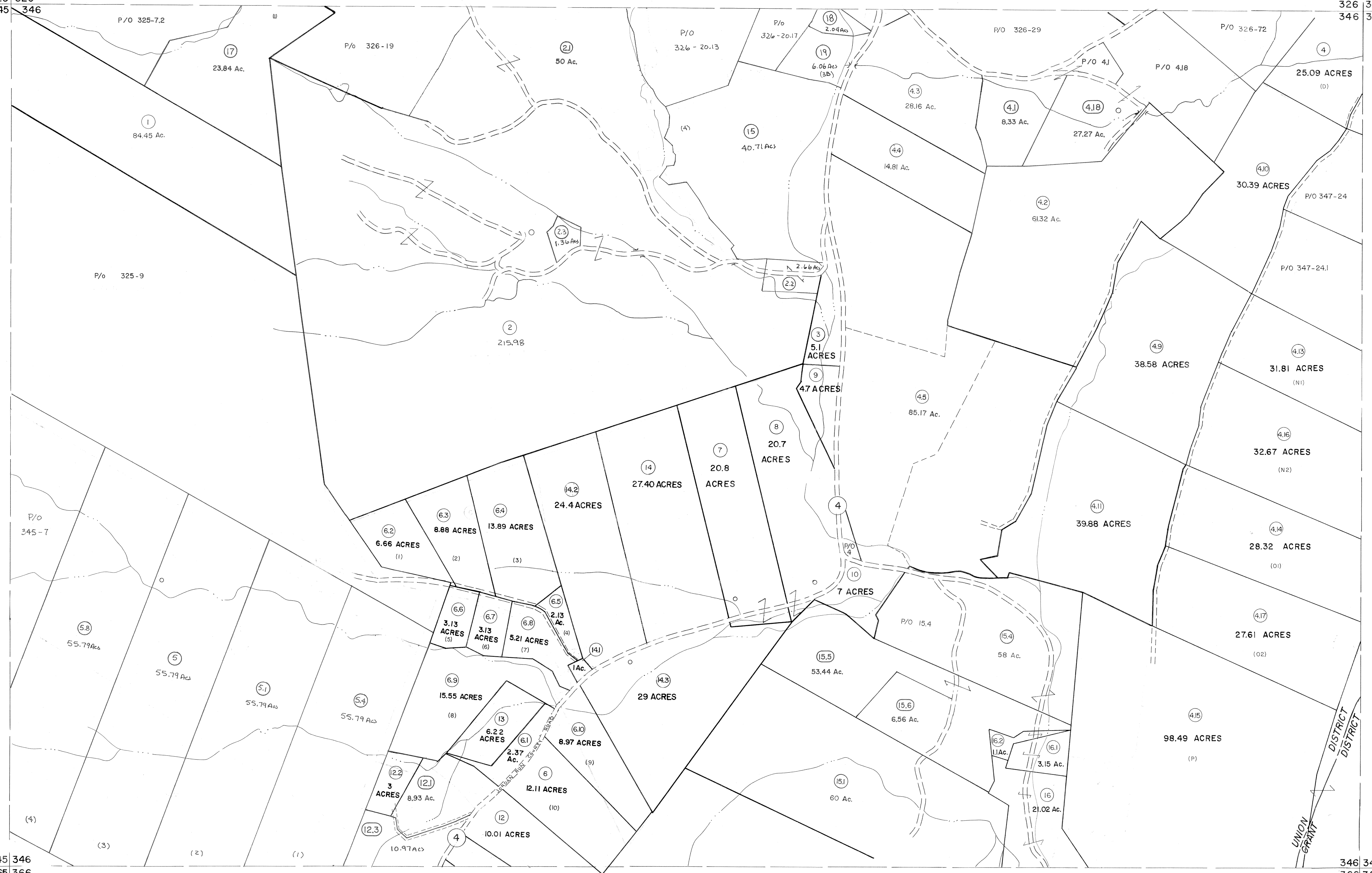


325 326
345 346

326 327
346 347

345 346
365 366

346 347
366 367



For Tax Purposes Only

Prepared by
MICHAEL BAKER, JR., INC.
Consulting Engineers
Rochester, Pennsylvania

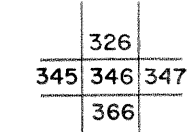
Legend

Property line	---	Original lot line	---
Edge of pavement or roadway	---	Deed lot number	(15)
Corporation line	---	Parcel or index number	(99)
District line	---	Improvement	o
County line	---	Railroad	---

Revisions

1	5-22-83	9	July 1985	17
2	5-24-73 D.W.Y.	10	July, 1986	18
3	3/4/75	11	Revised to 7-18-77	19
4	9-1-76	12	REV. TO 7-18-89	20
5	JULY, 1981	13	EXCALIBUR GRAPHICS 7/92	21
6	JULY, 1982	14	EXCALIBUR GRAPHICS 7/93	22
7	REV. TO 7-1-83	15	EXCALIBUR 6/99	23
8	REV. TO 7-1-84	16	EXCALIBUR 12/01	24

KEY MAP



GRANT COUNTY
STATE OF WEST VIRGINIA
Office of Assessor

DISTRICT

UNION

SHEET NO: 346

Date, Aerial Photography: November, 1961 Date, Map: Dec, 1962
Photo No: Scale: 1" = 400'