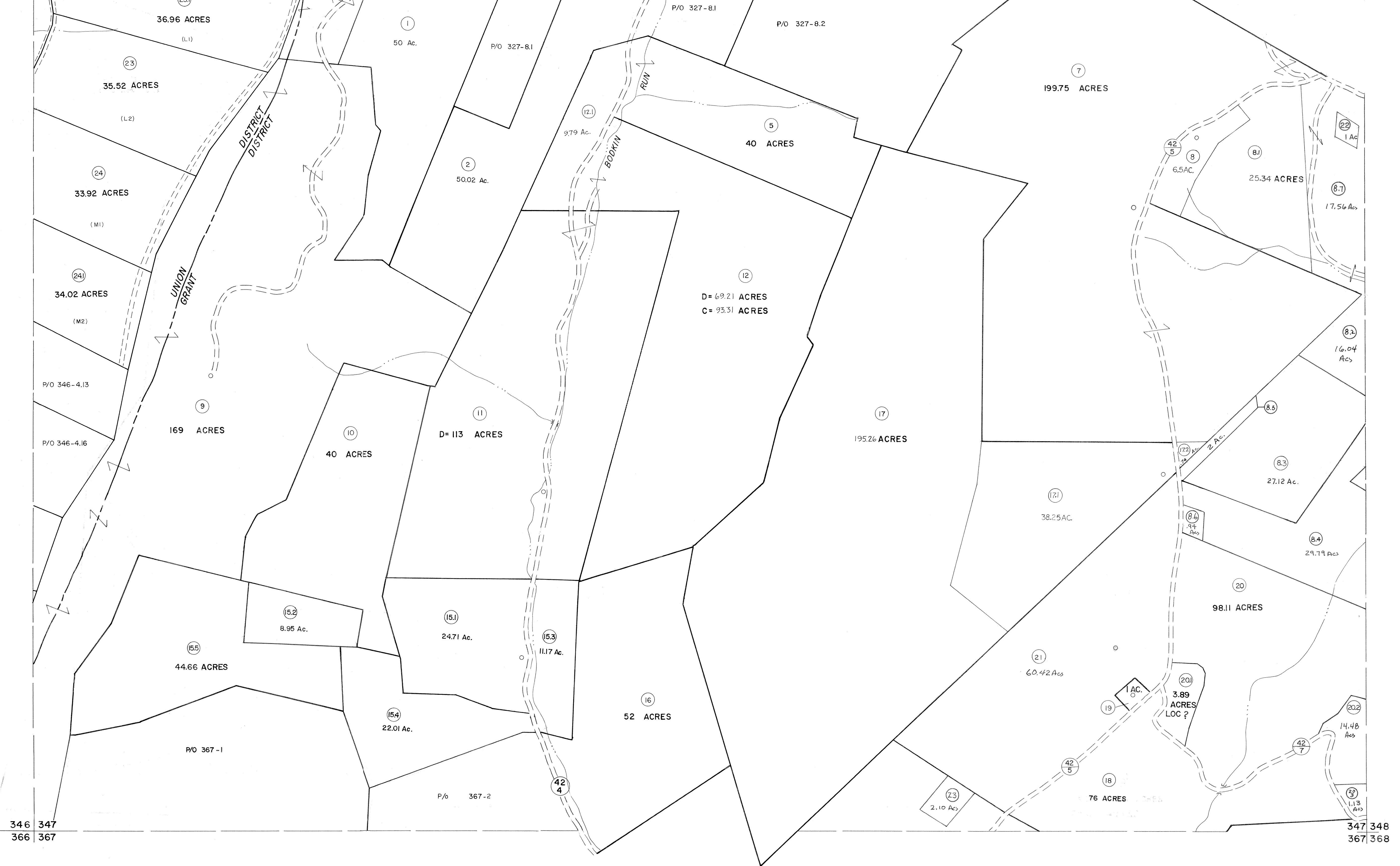


326 327
346 347

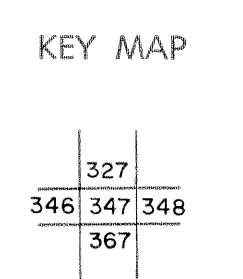
327 328
347 348



For Tax Purposes Only
 Prepared by
MICHAEL BAKER, JR., INC.
 Consulting Engineers
 Rochester, Pennsylvania

Legend	
Property line	—
Edge of pavement or roadway	—
Corporation line	—
District line	—
County line	—
Original lot line	- - - - -
Deed lot number	(15)
Parcel or index number	(99)
Improvement	o
Railroad	—+—+—+—

Revisions	
1	REV. TO 7-1-84 NCS
2	4-15-75 T.G.
3	9-1-76 T.G.
4	11/22/76 JC
5	1-2-81 NCS
6	JULY, 1981 TRL
7	JULY, 1982 TRL
8	REV. TO 7-1-83 NCS
9	REV. TO 7-1-84 NCS
10	1/1/85 TRL
11	July, 1986 TRL
12	Revised to 7-1-87 TRL
13	REV. TO 7-19-89 R.E.B.
14	EXCALIBUR GRAPHICS 7/91
15	EXCALIBUR GRAPHICS 7/92
16	EXCALIBUR GRAPHICS 7/93
17	EXCALIBUR 6/99
18	EXCALIBUR 7-05
19	EXCALIBUR 7/07
20	
21	
22	
23	
24	



GRANT COUNTY
 STATE OF WEST VIRGINIA
 Office of Assessor

DISTRICT
GRANT-UNION
 SHEET NO: 347
 Date, Aerial Photography: November, 1961 Date, Map: Dec., 1962
 Photo No: Scale: 1" = 400'