

344 345
364 365

345 346
365 366

364 365
384 385

365 366
385 386

P/O 345-4.7

P/O 345-4

①
212.31 Ac.

P/O 345-6

P/O 366-1

②
78.75 ACRES

③
72.26 ACRES

P/O 366-5

④
D = 62 ACRES
C = 74.7 ACRES

⑧
1 Ac.

⑨
110 Ac.

⑦
12 Ac.

U.S.A.

P/O 366-11
168.14 Ac.

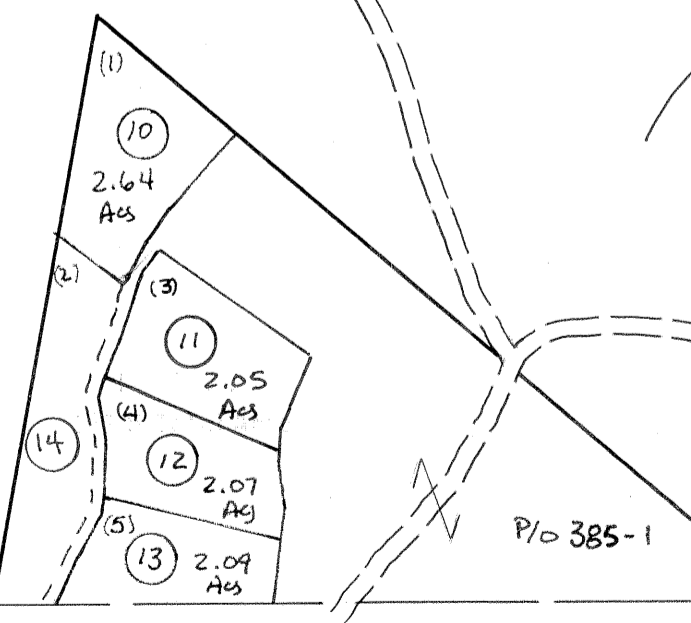
P/O 385-3

⑤
D = 25 ACRES
C = 19.8 ACRES

P/O 385-4

P/O 385-3.2

⑥
3.25
ACRES



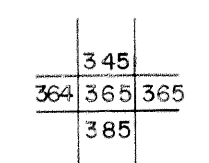
Legend

Property line	—	Original lot line	- - - - -
Edge of pavement or roadway	—	Deed lot number	(15)
Corporation line	—	Parcel or index number	(99)
District line	—	Improvement	o
County line	—	Railroad	—+—+—+—

Revisions

1	5-24-75	D.W.V.	9	Excavation	7/07	17
2	JULY 1981	TRL	10			18
3	JULY 1982	TRL	11			19
4	July 1985	TRL	12			20
5	July 1986	TRL	13			21
6	REV. TO 7-19-89	R.E.B.	14			22
7	EXCALIBUR GRAPHICS	7/91	15			23
8	Excaltion	7-04	16			24

KEY MAP



For Tax Purposes Only

Prepared by
MICHAEL BAKER, JR., INC.
Consulting Engineers
Rochester, Pennsylvania

GRANT COUNTY

STATE OF WEST VIRGINIA

Office of Assessor

DISTRICT

UNION

SHEET NO: 365

Date, Aerial Photography: November, 1961 Date, Map: Dec., 1962
Photo No: Scale: 1" = 400'