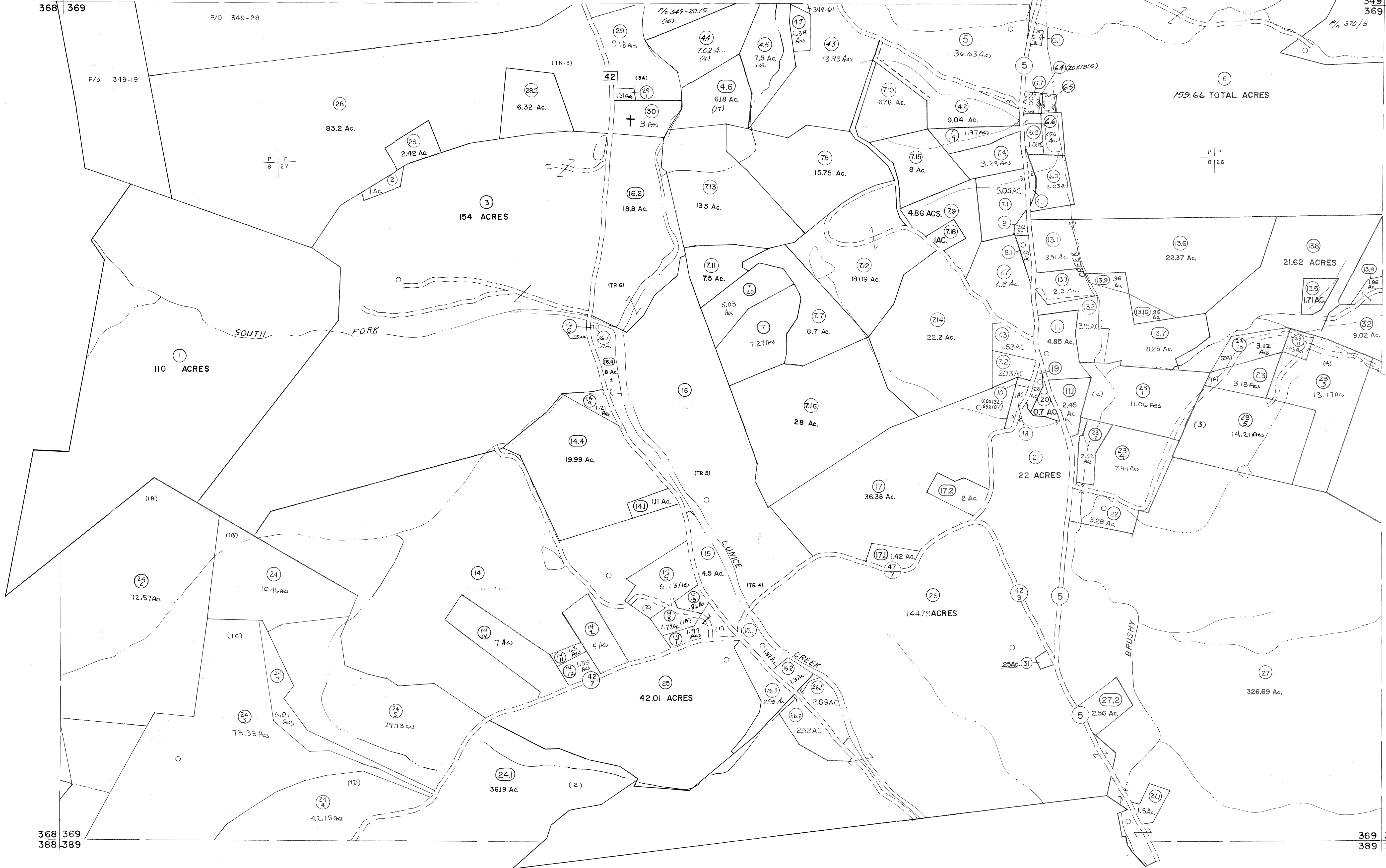


348 349  
368 369

349 350  
369 370



368 369  
388 389

369 370  
389 390

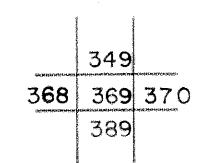
**For Tax Purposes Only**

Prepared by  
**MICHAEL BAKER, JR., INC.**  
Consulting Engineers  
Rochester, Pennsylvania

Legend	
Property line	—
Edge of pavement or roadway	—
Corporation line	—
District line	—
County line	—
Original lot line	—
Deed lot number	(15)
Parcel or index number	(22)
Improvement	o
Railroad	—

Revisions			
1	MAY 22, 1973	NCS	17
2	4-16-75	T.G.	18
3	9-2-76	T.G.	19
4	1-5-81		20
5	Revised to 7-81		21
6	Revised to 7-82		22
7	REV. TO 7-1-83	NCS	23
8	REV. TO 7-1-84	NCS	24
9	11-1-85		25
10	Revised to 7-1-87		26
11	REV. TO 7-19-89	R.E.B.	27
12	EXCALIBUR GRAPHICS 7/91		28
13	EXCALIBUR GRAPHICS 7/92		29
14	EXCALIBUR GRAPHICS 7/93		30
15	EXCALIBUR 11/99		31
16	EXCALIBUR 6/99		32

**KEY MAP**



**GRANT COUNTY**  
STATE OF WEST VIRGINIA  
Office of Assessor

DISTRICT	<b>GRANT</b>
<b>SHEET NO: 369</b>	
Date, Aerial Photography: November, 1961	Date, Map: Dec. 1962
Photo No:	Scale: 1" = 400'