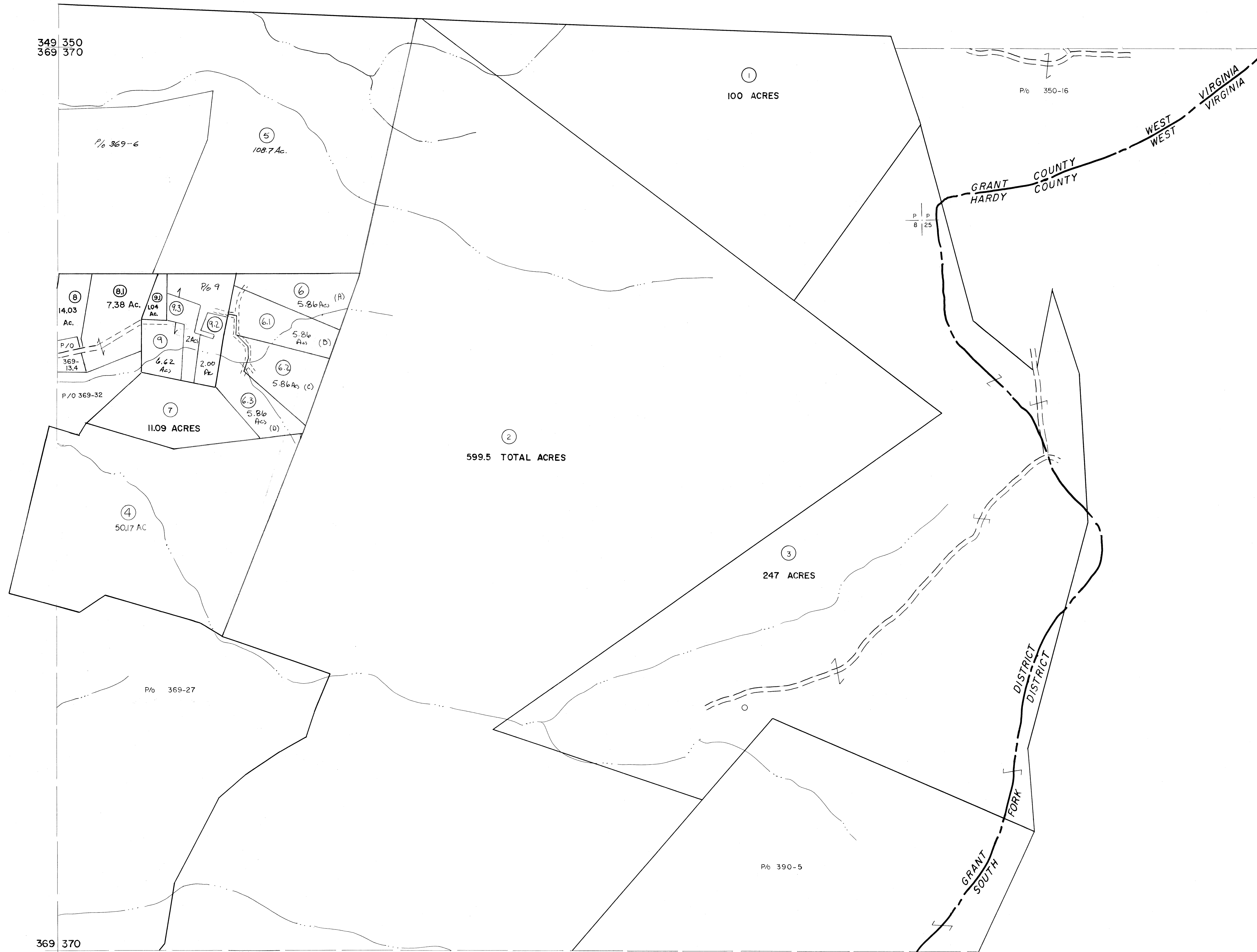


349 350
369 370

350
370



For Tax Purposes Only

Prepared by
MICHAEL BAKER, JR., INC.
Consulting Engineers
Rochester, Pennsylvania

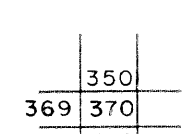
Legend

Property line	—————	Original lot line	-----
Edge of pavement or roadway	-----	Deed lot number	(15)
Corporation line	-----	Parcel or index number	(19)
District line	-----	Improvement	o
County line	-----	Railroad	+

Revisions

1	MAY 22 1973 DRE	9	EXCALIBUR 1/99	17	
2	7-8-81	10	EXCALIBUR 6/99	18	
3	Revised to 7-81	11	EXCALIBUR 7-04	19	
4	Revised to 7-82	12		20	
5	REV. TO 7-1-83 NCS	13		21	
6	REV. TO 7-1-84 NCS	14		22	
7	Revised to 7-19-89	15		23	
8	EXCALIBUR GRAPHICS 7/91	16		24	

KEY MAP



GRANT COUNTY
STATE OF WEST VIRGINIA
Office of Assessor

DISTRICT

GRANT

SHEET NO: 370

Date, Aerial Photography: November, 1961 Date, Map: Dec., 1962
Photo No: Scale: 1" = 400'