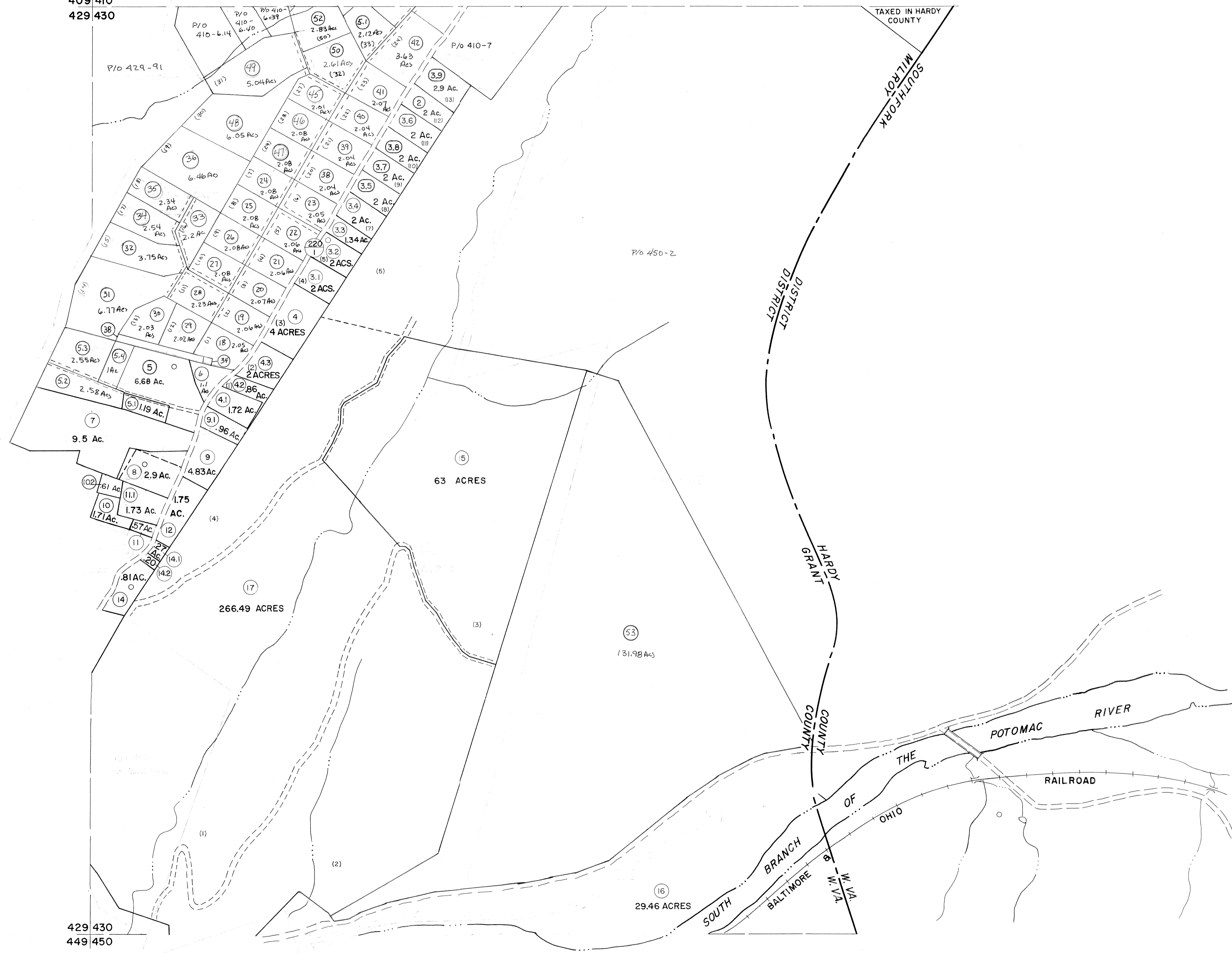


409 410
429 430

410
430



429 430
449 450

430
450

For Tax Purposes Only

Prepared by
MICHAEL BAKER, JR., INC.
Consulting Engineers
Rochester, Pennsylvania

Legend

Property line	—	Original lot line	- - - - -
Edge of pavement or roadway	—	Deed lot number	(15)
Corporation line	—	Parcel or index number	(22)
District line	—	Improvement	o
County line	—	Railroad	—+—+—

Revisions

1	MAY 21 1972 DBC	9	Rev. to 7-19-89	REB.	17	Excavator	7/07
2	12-16-74	T.6.	10	EXCALIBUR GRAPHICS 7/91	18		
3	Revised to 7-81		11	EXCALIBUR GRAPHICS 7/92	19		
4	REV. TO 7-1-83	NCS	12	EXCALIBUR GRAPHICS 7/93	20		
5	REV. TO 7-1-84	NCS	13	Excavator	6/99	21	
6	July 1985		14	EXCALIBUR	7/03	22	
7	REV. TO 7-1-86	NCS	15	Excavator	7/04	23	
8	Revised to 7-87		16	Excavator	7/05	24	

KEY MAP

410
429 430
450

GRANT COUNTY
STATE OF WEST VIRGINIA
Office of Assessor

DISTRICT

MILROY

SHEET NO: 430

Date, Aerial Photography: November, 1961 Date, Map: Dec., 1962
Photo No: Scale: 1" = 400'