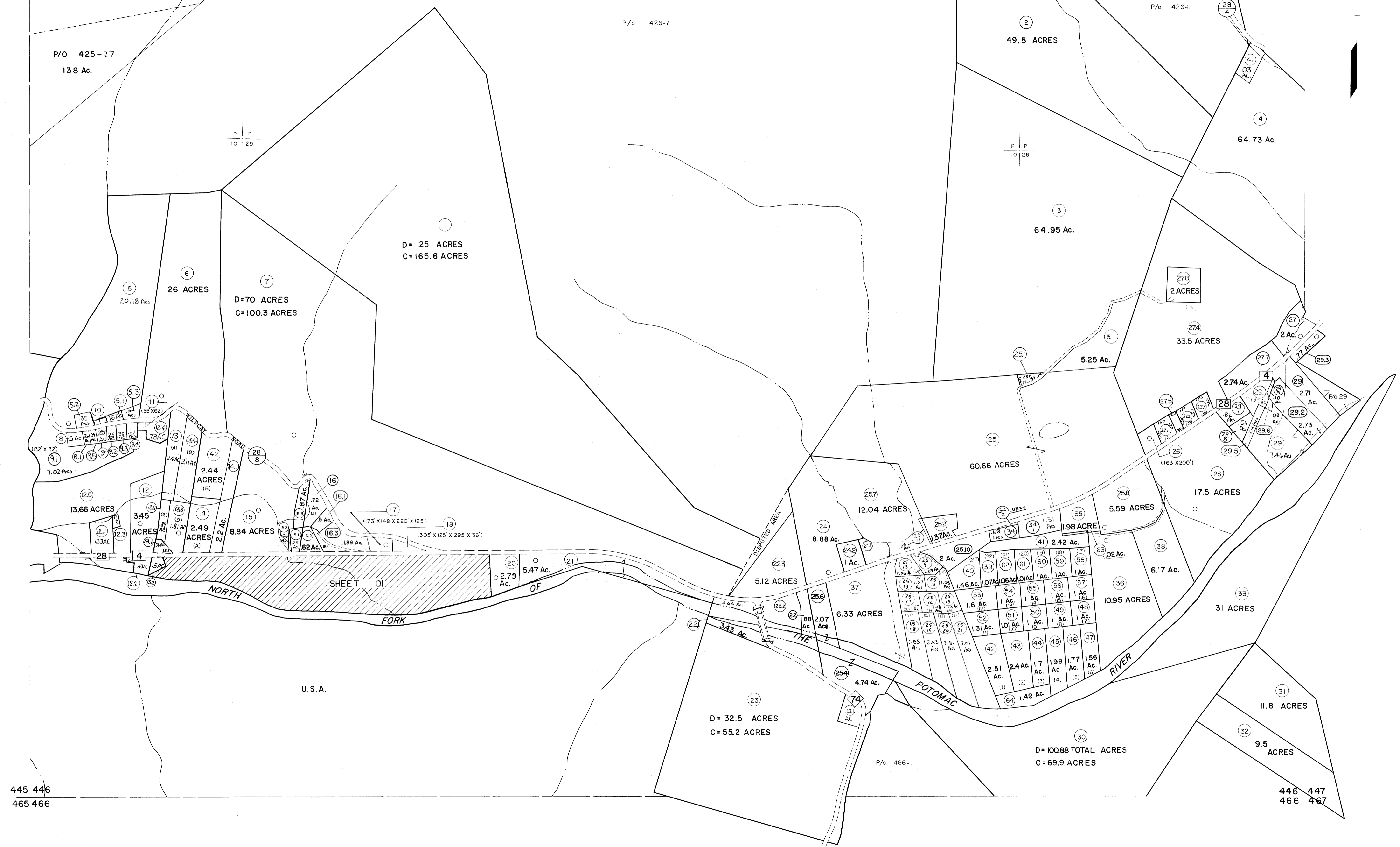


425 426  
445 446

426 427  
446 447



445 446  
465 466

446 447  
466 467

For Tax Purposes Only

Prepared by  
MICHAEL BAKER, JR., INC.  
Consulting Engineers  
Rochester, Pennsylvania

Legend	
Property line	—————
Edge of pavement or roadway	—————
Corporation line	—————
District line	—————
County line	—————
Original lot line	—————
Deed lot number	(15)
Parcel or index number	(19)
Improvement	○
Railroad	—+—+—+—

Revisions	
1	MAY 23 1973 RBE
2	10/17/75 Hooper/K
3	Revised to 7-81
4	Revised to 7-82
5	REV. TO 7-1-83 NCS
6	REV. TO 7-1-84 NCS
7	July 1988
8	REV. TO 7-1-86 NCS
9	Revised to 7-87
10	REV. TO 7-19-89 R.E.B.
11	EXCALIBUR GRAPHICS 7/91
12	EXCALIBUR GRAPHICS 7/92
13	EXCALIBUR GRAPHICS 7/93
14	EXCALIBUR 11/99
15	EXCALIBUR 6/99
16	EXCALIBUR 7/03
17	Mapmaker 7-04
18	
19	
20	
21	
22	
23	
24	

KEY MAP

GRANT COUNTY  
STATE OF WEST VIRGINIA  
Office of Assessor

DISTRICT  
MILROY

SHEET NO: 446

Date, Aerial Photography: November, 1961 Date, Map: Dec., 1962  
Photo No: Scale: 1" = 400'