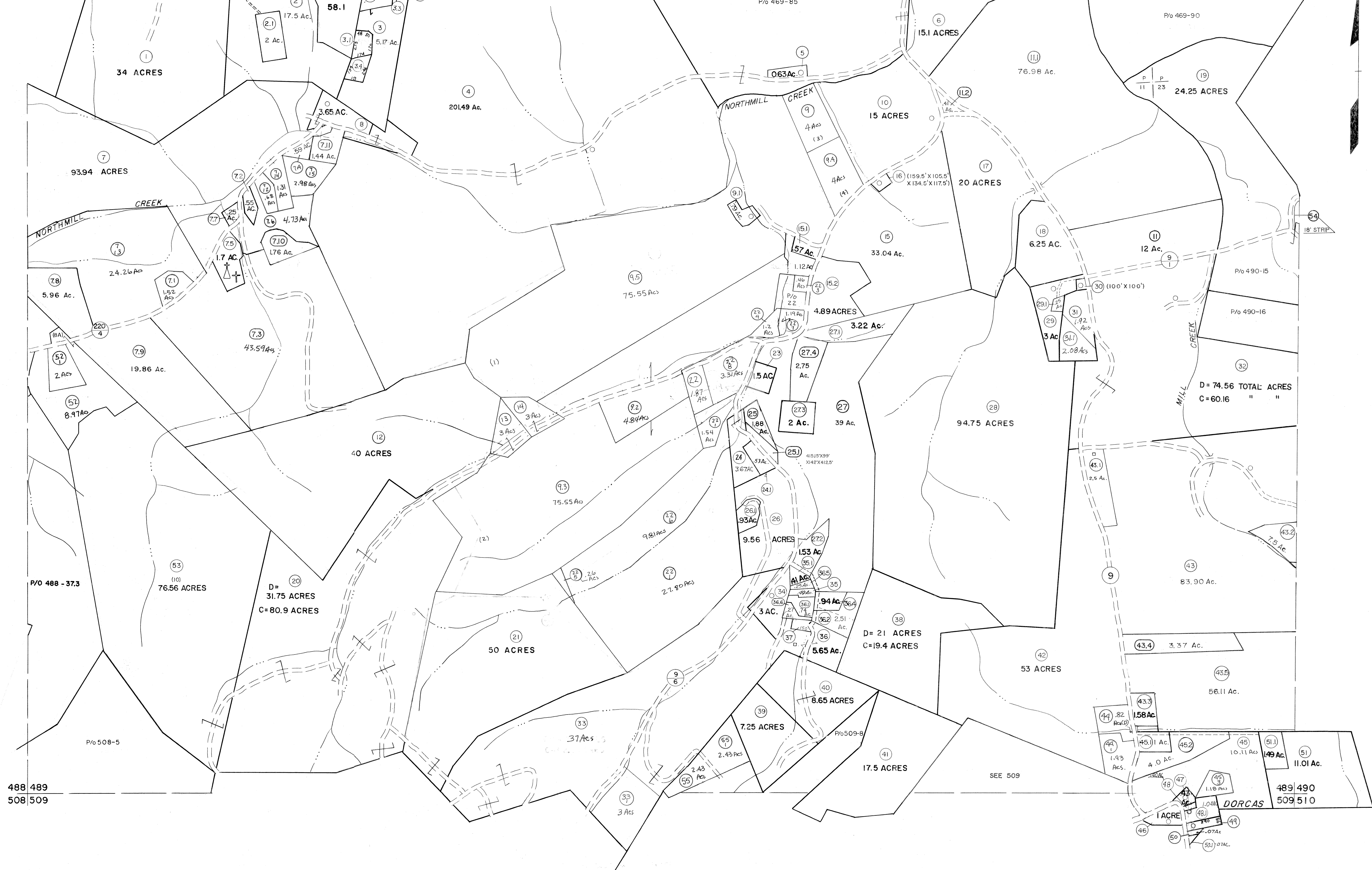


468 469  
488 489

469 470  
489



**For Tax Purposes Only**

Prepared by  
**MICHAEL BAKER, JR., INC.**  
Consulting Engineers  
Rochester, Pennsylvania

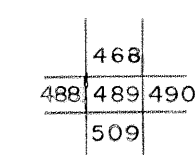
**Legend**

Property line	—————	Original lot line	-----
Edge of pavement or roadway	-----	Deed lot number	(15)
Corporation line	-----	Parcel or index number	(22)
District line	-----	Improvement	o
County line	-----	Railroad	+

**Revisions**

1	5-22-67	9	Revised to 7-1-85	17	EXCALIBUR 12/01
2	8-25-73 OAS	10	REV. TO 7-1-86	18	EXCALIBUR 7/03
3	12-17-74 DAE	11	Revised to 7-19-88	19	EXCALIBUR 7-04
4	7/13/76	12	EXCALIBUR GRAPHICS 7/91	20	EXCALIBUR 7/07
5	Revised to 7-81	13	EXCALIBUR GRAPHICS 7/92	21	
6	Revised to 7-82	14	EXCALIBUR GRAPHICS 7/93	22	
7	REVISED TO 7-1-83	15	EXCALIBUR 1/99	23	
8	July, 1981	16	EXCALIBUR 6/99	24	

**KEY MAP**



**GRANT COUNTY**  
STATE OF WEST VIRGINIA  
Office of Assessor

**DISTRICT**

**MILROY**

**SHEET NO: 489**

Date, Aerial Photography: November, 1961 Date, Map: Dec. 1962  
Photo No: Scale: 1" = 400'