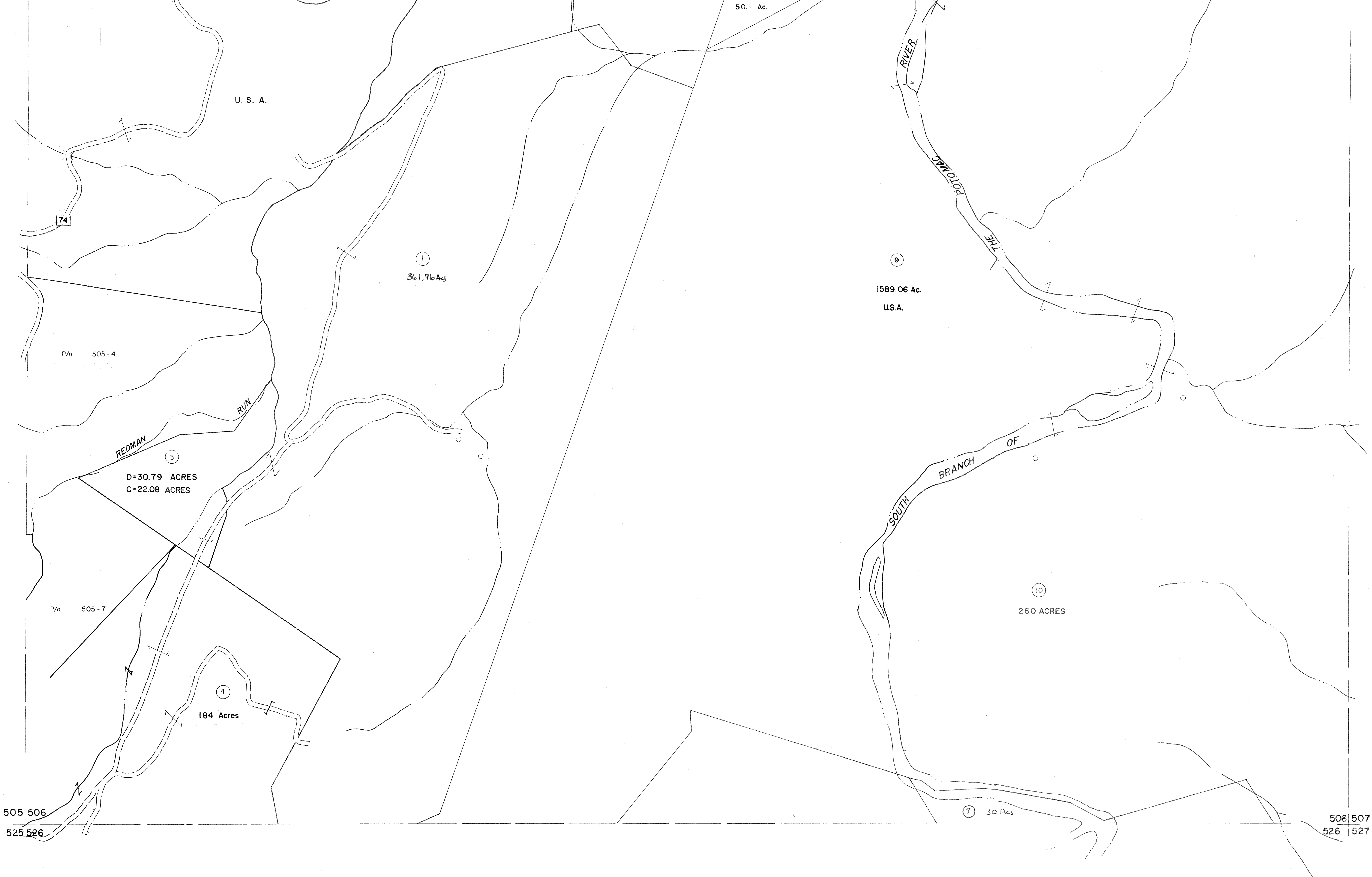


485 486
505 506

486 487
506 507



For Tax Purposes Only

Prepared by
MICHAEL BAKER, JR., INC.
Consulting Engineers
Rochester, Pennsylvania

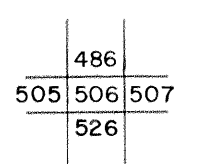
Legend

| | | | |
|-----------------------------|-----------|------------------------|------|
| Property line | — | Original lot line | — |
| Edge of pavement or roadway | - - - | Deed lot number | (15) |
| Corporation line | - · - · - | Parcel or index number | (99) |
| District line | - - - - - | Improvement | o |
| County line | - - - - - | Railroad | + |

Revisions

| | | | |
|---|-------------------|----|----|
| 1 | MAY 25 1972 DRG | 9 | 17 |
| 2 | Revised to 7-81 | 10 | 18 |
| 3 | Revised to 7-1-82 | 11 | 19 |
| 4 | Revised to 7-1-85 | 12 | 20 |
| 5 | Revised to 7-1-87 | 13 | 21 |
| 6 | Revised to 7-1-87 | 14 | 22 |
| 7 | EXCHANGE 1199 | 15 | 23 |
| 8 | EXCHANGE 707 | 16 | 24 |

KEY MAP



GRANT COUNTY
STATE OF WEST VIRGINIA
Office of Assessor

DISTRICT

MILROY

SHEET NO: 506

Date, Aerial Photography: November, 1961 Date, Map: Dec., 1962
Photo No: Scale: 1" = 400'