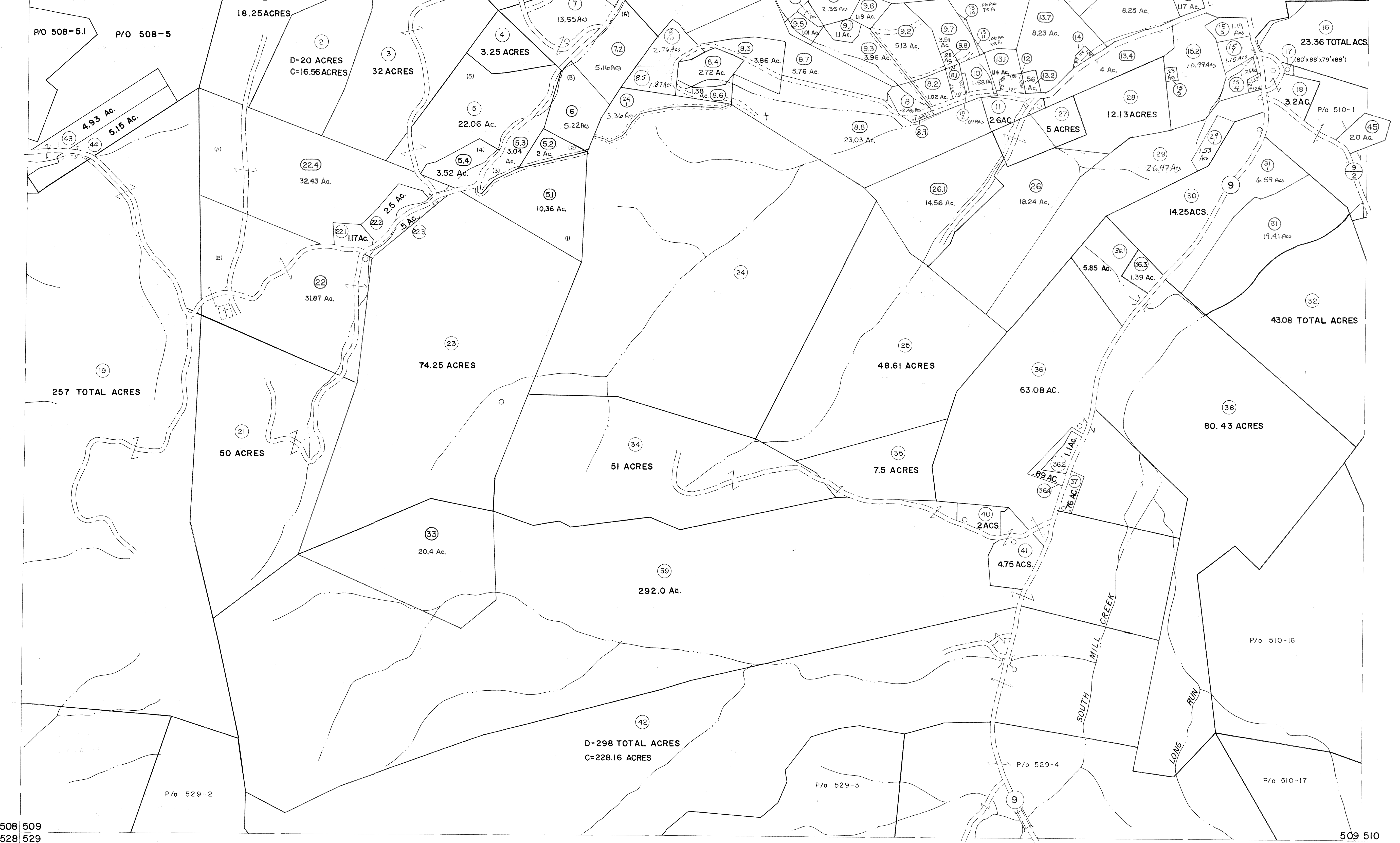


488 489
508 509

489 490
509 510



508 509
528 529

509 510
529 530

For Tax Purposes Only

Prepared by
MICHAEL BAKER, JR., INC.
Consulting Engineers
Rochester, Pennsylvania

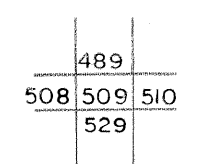
Legend

Property line	—————	Original lot line	-----
Edge of pavement or roadway	-----	Deed lot number	(15)
Corporation line	-----	Parcel or index number	(22)
District line	-----	Improvement	o
County line	-----	Railroad	—+—+—+—

Revisions

1	MAY 25 1873	9	Revised to 7-1-87	17	Exchange	67/67
2	12/1/74	10	Revised to 7-1-87	18		
3	9-7-76	11	EXCALIBUR GRAPHICS 7/91	19		
4	Revised to 7-81	12	EXCALIBUR GRAPHICS 7/92	20		
5	Revised to 7-1-82	13	EXCALIBUR GRAPHICS 7/93	21		
6	REVISED TO 7-1-83	14	EXCALIBUR 11/99	22		
7	July 1984	15	EXCALIBUR 12/01	23		
8	Revised to 7-1-85	16	EXCALIBUR 7-04	24		

KEY MAP



GRANT COUNTY
STATE OF WEST VIRGINIA
Office of Assessor

DISTRICT

MILROY

SHEET NO: 509

Date, Aerial Photography: Nov., 1961 Date, Map: Dec., 1962
Photo No: Scale: 1" = 400'