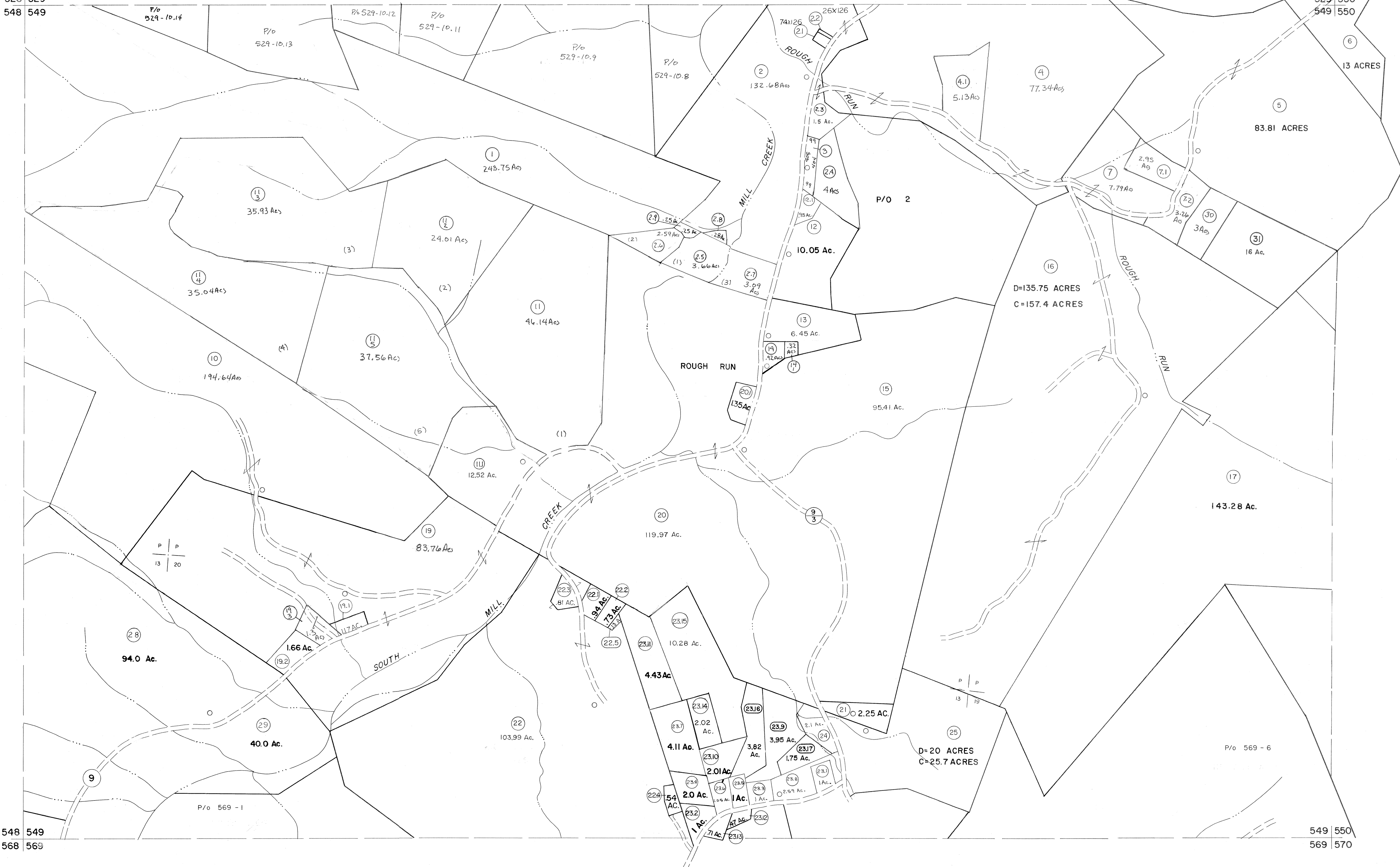


528 529
548 549

529 530
549 550

548 549
568 569

549 550
569 570



For Tax Purposes Only

Prepared by
MICHAEL BAKER, JR., INC.
Consulting Engineers
Rochester, Pennsylvania

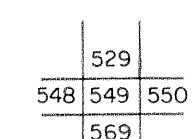
Legend

Property line	—————	Original lot line	-----
Edge of pavement or roadway	———	Deed lot number	(15)
Corporation line	-----	Parcel or index number	(99)
District line	-----	Improvement	o
County line	-----	Railroad	+

Revisions

1	MAY 26 1973 DAE	9	EXCALIBUR GRAPHICS 7/92	17
2	12/16/74	10	EXCALIBUR 1/89	18
3	Revised to 7-81	11	EXCALIBUR 6/99	19
4	Revised to 7-1-82	12	EXCALIBUR 12/01	20
5	Revised to 7-1-85	13	EXCALIBUR 7/03	21
6	REV TO 7-1-86 NCS	14	EXCALIBUR 7/05	22
7	Revised to 7/1/89	15	EXCALIBUR 7/07	23
8	EXCALIBUR GRAPHICS 7/91	16		24

KEY MAP



GRANT COUNTY
STATE OF WEST VIRGINIA
Office of Assessor

DISTRICT

MILROY

SHEET NO: 549

Date, Aerial Photography: November, 1961 Date, Map: Dec, 1962
Photo No: Scale: 1" = 400'