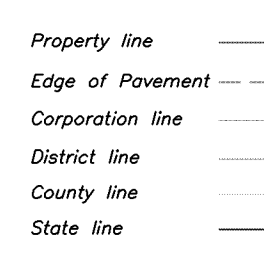




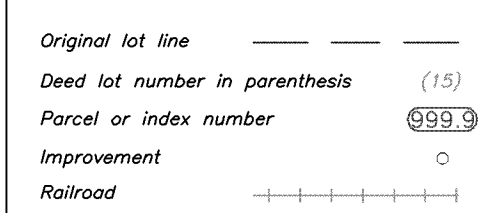
WV LEGISLATIVE REGULATION
TITLE 189 SERIES 5 1991
ARTICLE 5 SECTION 5.1

Reproduction of tax maps prohibited -
No person may reproduce, copy, distribute
or sell copies of tax maps prepared by
the counties without having first obtained
the written permission of the county
assessor.

TAX MAPS DIGITALLY REPRODUCED BY: COMPUTER MAPPING CONSULTANTS, INC.
221 S. 3RD ST., OAKLAND, MD 21550



Legend



Revisions

1	AS OF JULY 1 1996	KWS	9	AS OF JULY 1 2005	JVB
2	AS OF JULY 1 1997	KWS	10	AS OF JULY 1 2006	JVB
3	AS OF JULY 1 1999	JVB	11		
4	AS OF JULY 1 2000	JVB	12		
5	AS OF JULY 1 2001	JVB	13		
6	AS OF JULY 1 2002	JVB	14		
7	AS OF JULY 1 2003	JVB	15		
8	AS OF JULY 1 2004	JVB	16		

MAP REFERENCE

22	13	11
21	9	10
20	8	

HAMPSHIRE COUNTY - WEST VIRGINIA

Office of Assessor

For Tax Purposes Only

SPRINGFIELD

Map No.: **9** FILE NAME: _____
 Aerial Photography: 4/59 Date of Map: 1/60
 Photo No.: 3-21 Scale: 1 inch = 400 ft