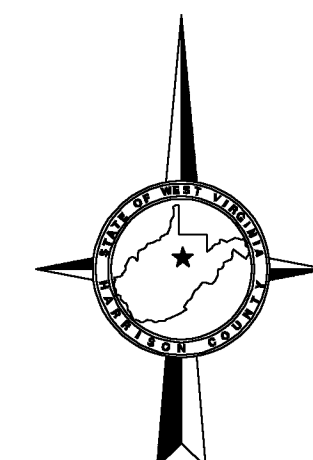


265 266  
285 286

266 267  
286 287

- 17 (219.3X31X169X53.9X10)
- 18 (60X89X53.3X95.4)
- 19 (61.04X95.4X53.5X102.7)
- 20 (4.37X102.7X53X106.8)
- 25.3 .05AC
- 27.3 (25X157.1X151.6)
- 28 (140.3X52.9X153.9X59X62)
- 29 (40X198.5X87.5X106X109)
- 94.3 .08AC
- 94.4 .06AC



SHEET 266

SHEET 266

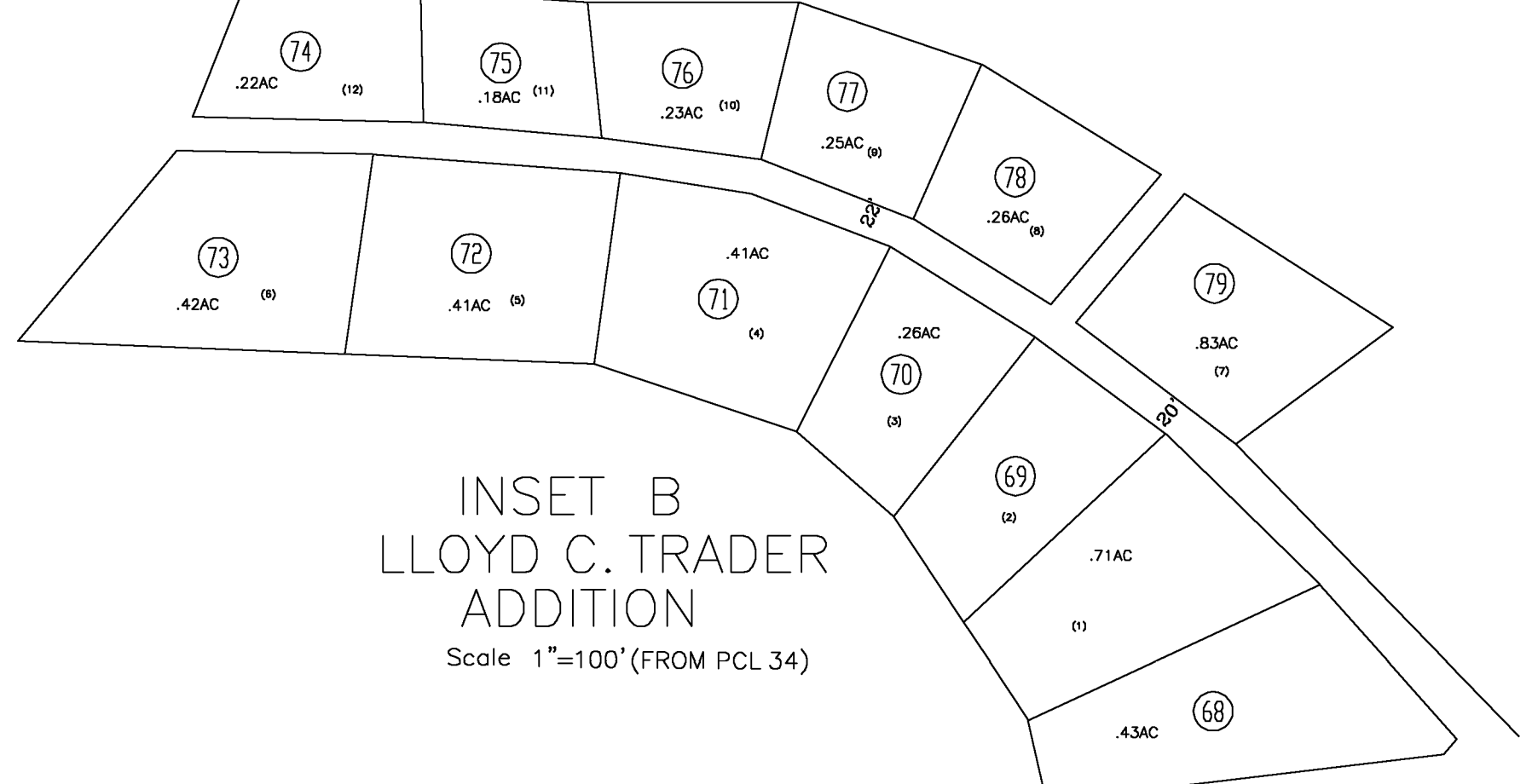
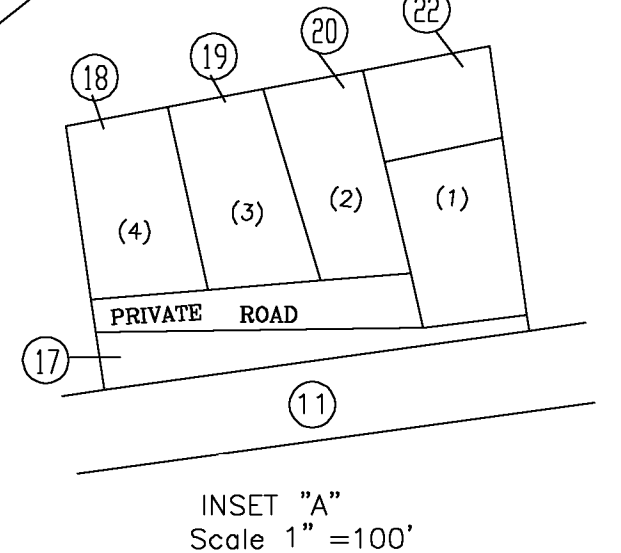
SHEET 10  
EDGEWOOD

SEE SHEET 09

SEE SHEET 06 ADAMSTON

286 287  
306 307

285 286  
305 306



For Tax Purposes Only

**CHERYL L. ROMANO**  
**HARRISON COUNTY ASSESSOR**

LEGEND	
Property line	—
Edge of pavement or roadway	- - - -
Corporation line	—
District line	—
County line	- - - -
Original lot line	- - - - -
Deed lot number	(15)
Parcel or Index number	XX
Improvement	o
Railroad	—
Church	+
Cemetery	Δ
Golf Course	δ
School	⊕

REVISIONS	
1	
2	
3	
4	
5	
6	
7	
8	

**RESTRICTION**

All tax maps created under the provisions of reappraisal legislation are the property of Harrison County West Virginia and the reproduction, copying distribution or sale of such tax maps or any copies thereof without the written permission of the Harrison County Assessor is prohibited by law.

**KEY MAP**

**HARRISON COUNTY**  
**STATE OF WEST VIRGINIA**  
**Office of Assessor**

DISTRICT  
COAL  
MAP NO:  
286

Date, Aerial Photography: April 1960 Date, Map: Sept. 1960  
Photo No: Scale: 1" = 400'