

18 - 7

MAC CORKLE AVENUE

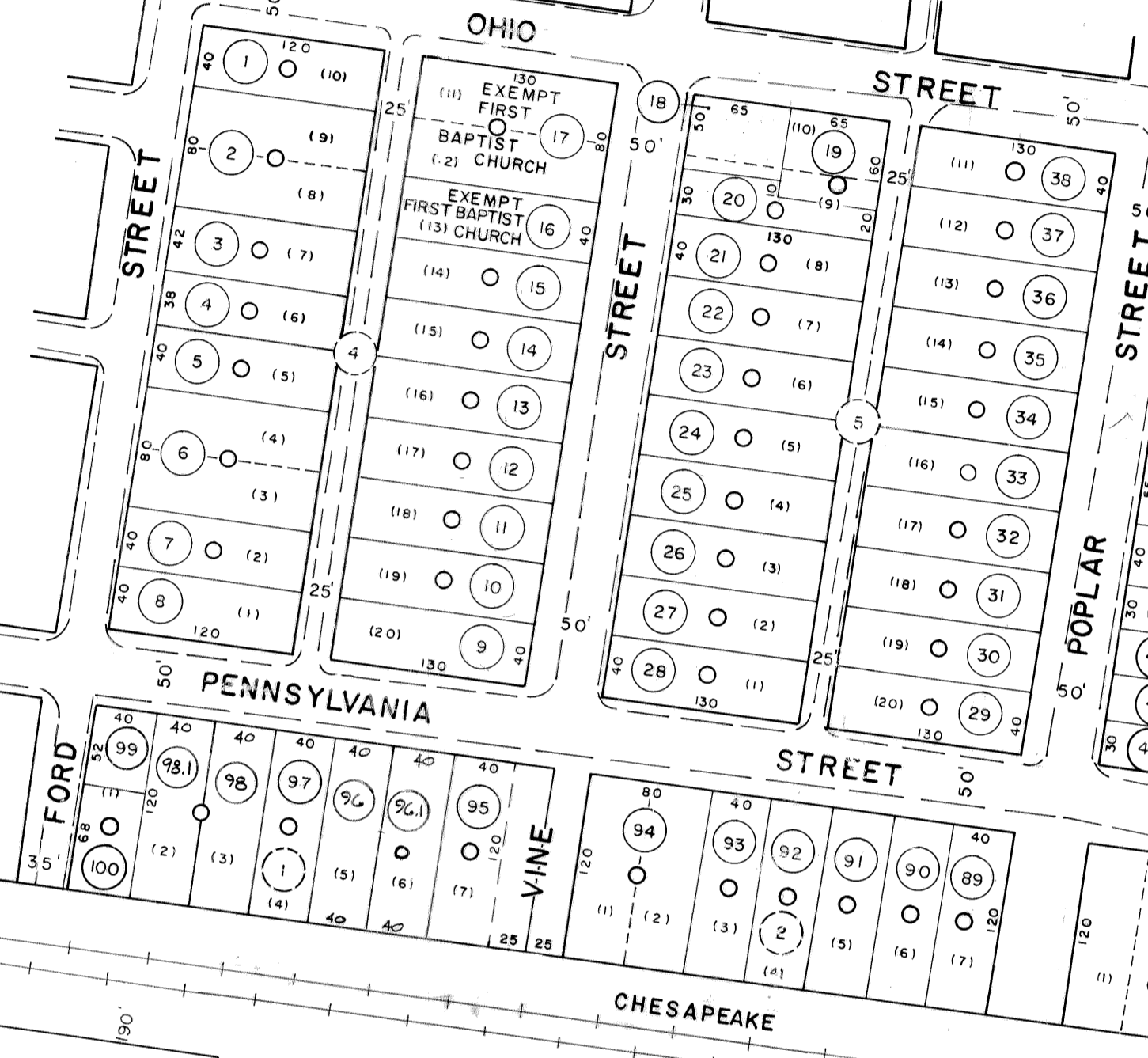
DIVISION STREET

STREET

CITY OF SOUTH CHARLESTON
9.03 AC. CAL.
EXEMPT
CITY OF SOUTH CHARLESTON

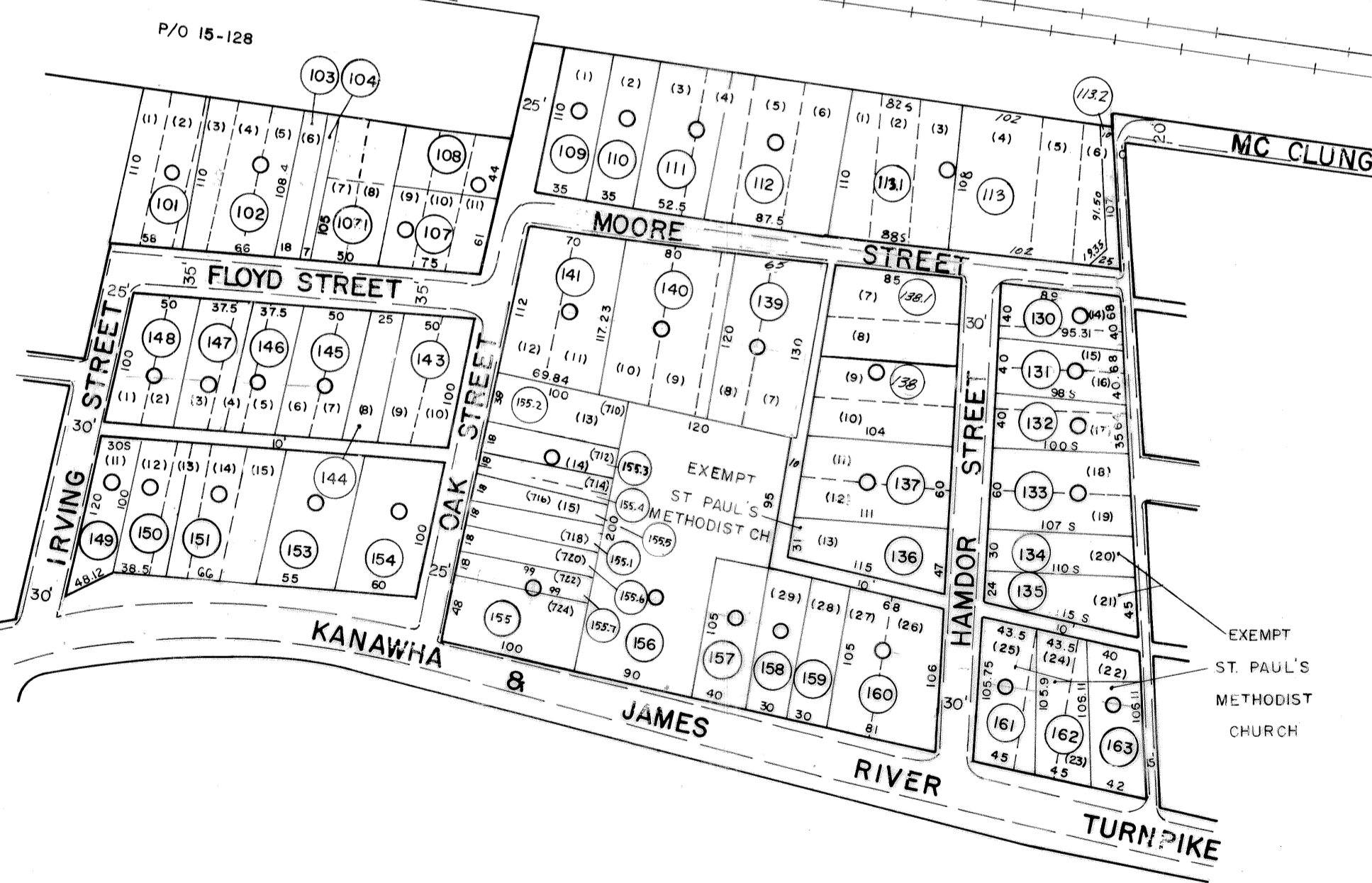
18 - 11

18 - 13



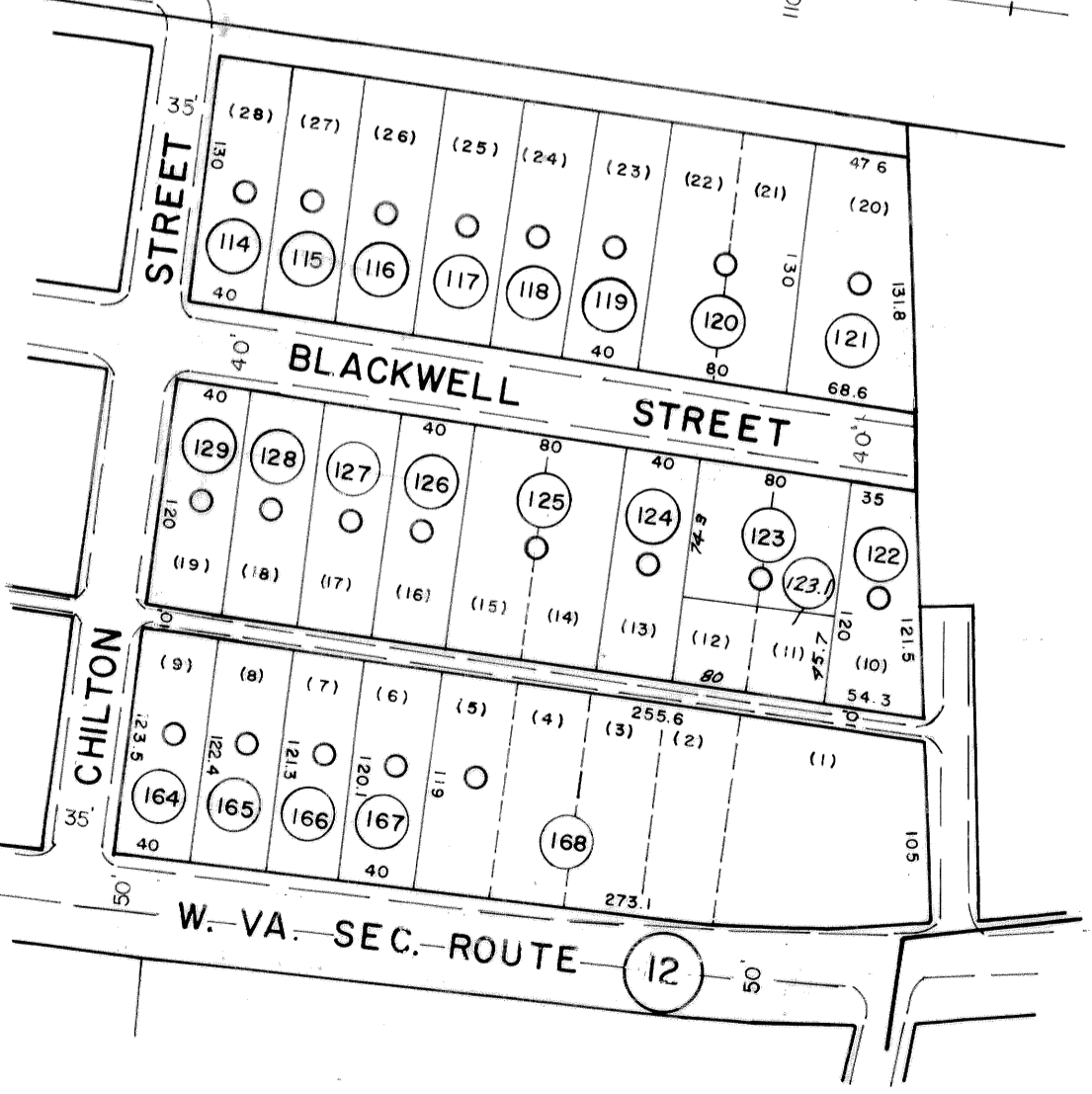
18 - 10

18 - 15



18 - 17

18 - 20



18 - 18

NOTE:
PARCEL NOS. 79 & 84
NOT USED

DRAFTED BY
CHECKED BY

FOR TAX PURPOSES ONLY
PREPARED BY

AERO SERVICE CORPORATION
AMERICAN AIR SURVEYS, INC.
907 PENN AVENUE, PITTSBURGH 22, PA.
NEW YORK ATLANTA

Legend

Table with 2 columns: Symbol/Line Type and Description. Includes Property Line, Right of way line, Edge of pavement or roadway, Corporation line, District line, County line, Stream, Original lot line, Deed lot number, Parcel or index number, Improvement, Railroad, Scaled Dimension, Original block number, CAL.

Revisions

Table with 4 columns: Revision Number, Date, Description, and Reference. Includes revisions from 4-28-72 to 7-1-87.

KANAWHA COUNTY
Office of Assessor
CHARLESTON, WEST VIRGINIA

SPRING HILL CORPORATION - 18

Map No. 12

Photo No. 1080 Scale: 1"=100'
Date, Photography: April, May 1964 Date, Map: 2-26-65