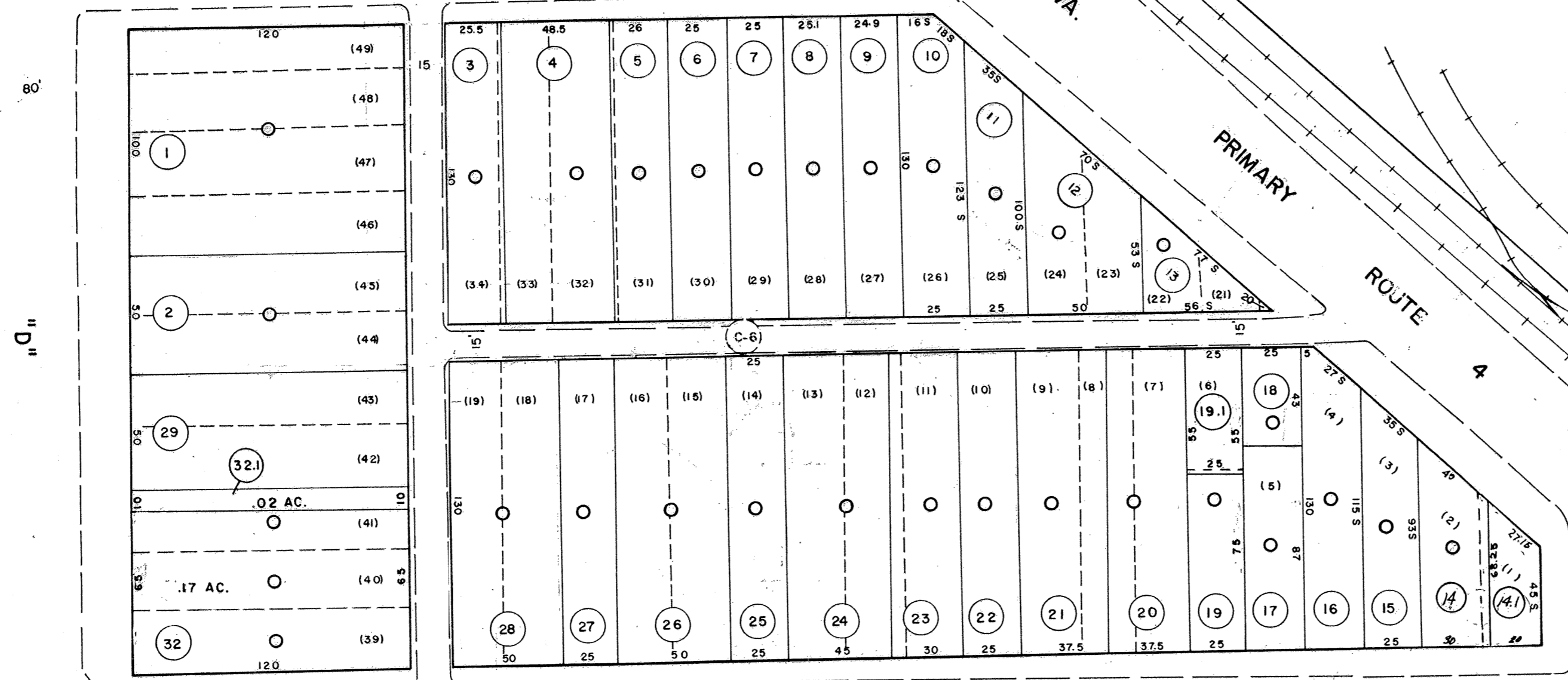


22-6

SEVENTH AVENUE

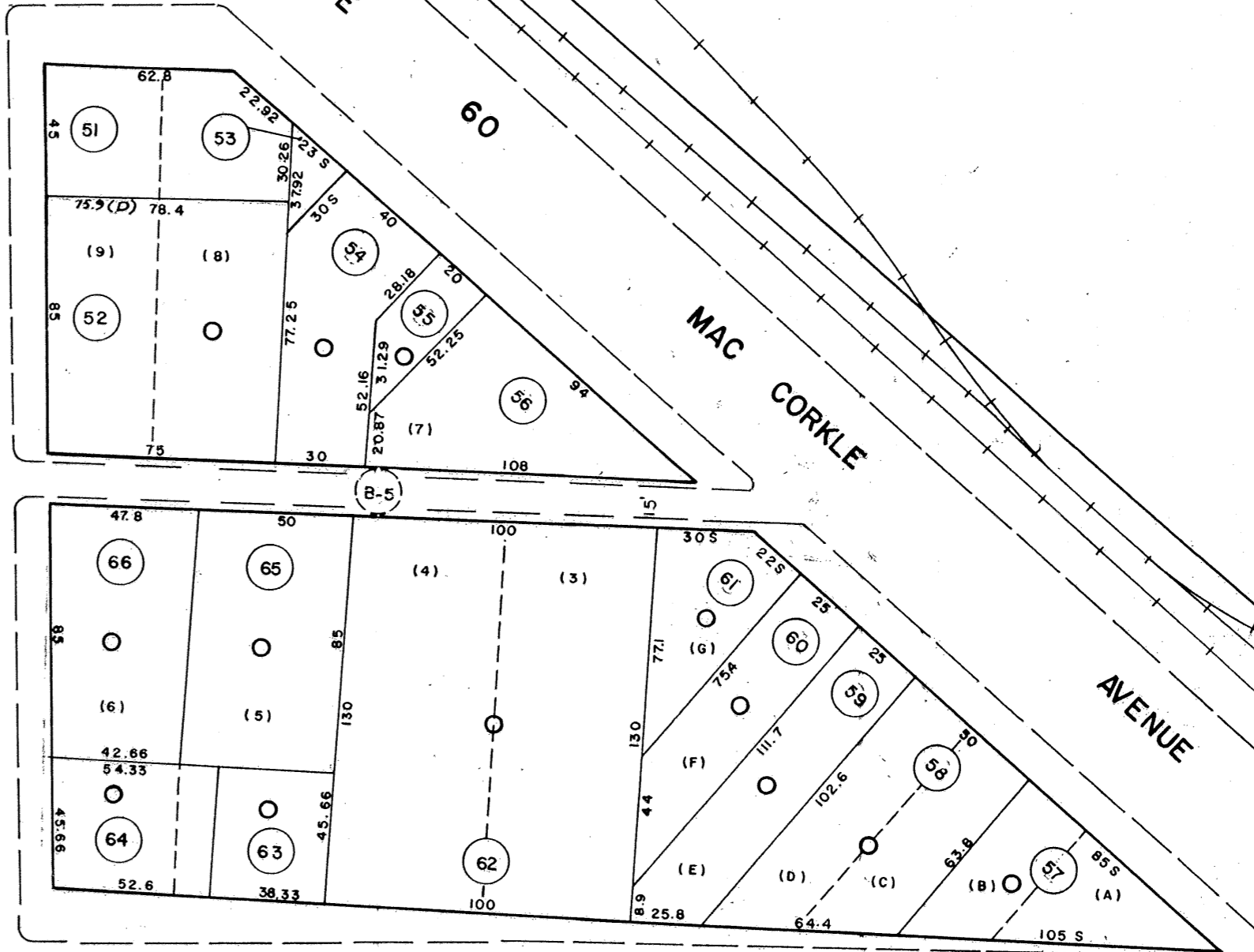
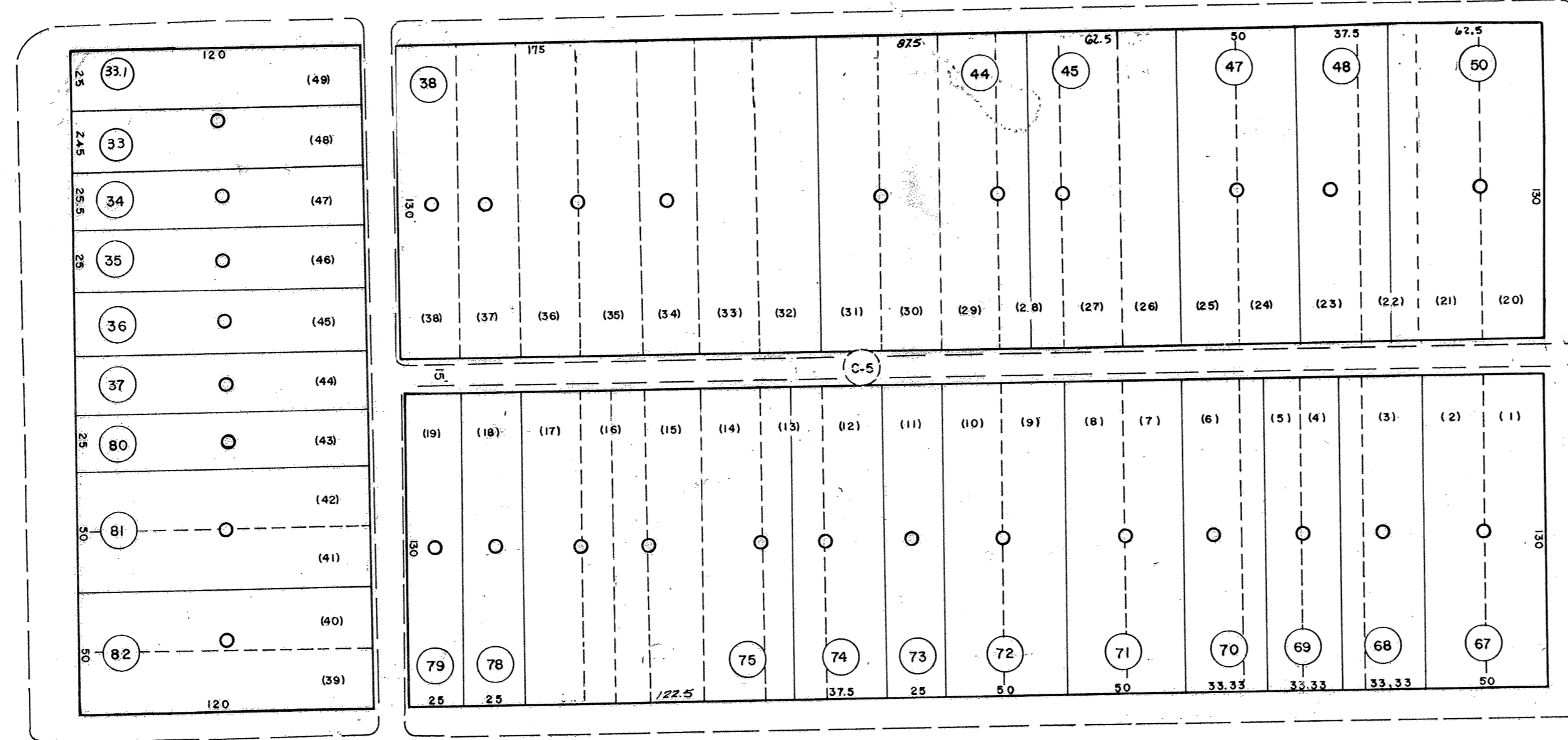
AVENUE



22-9

SIXTH AVENUE

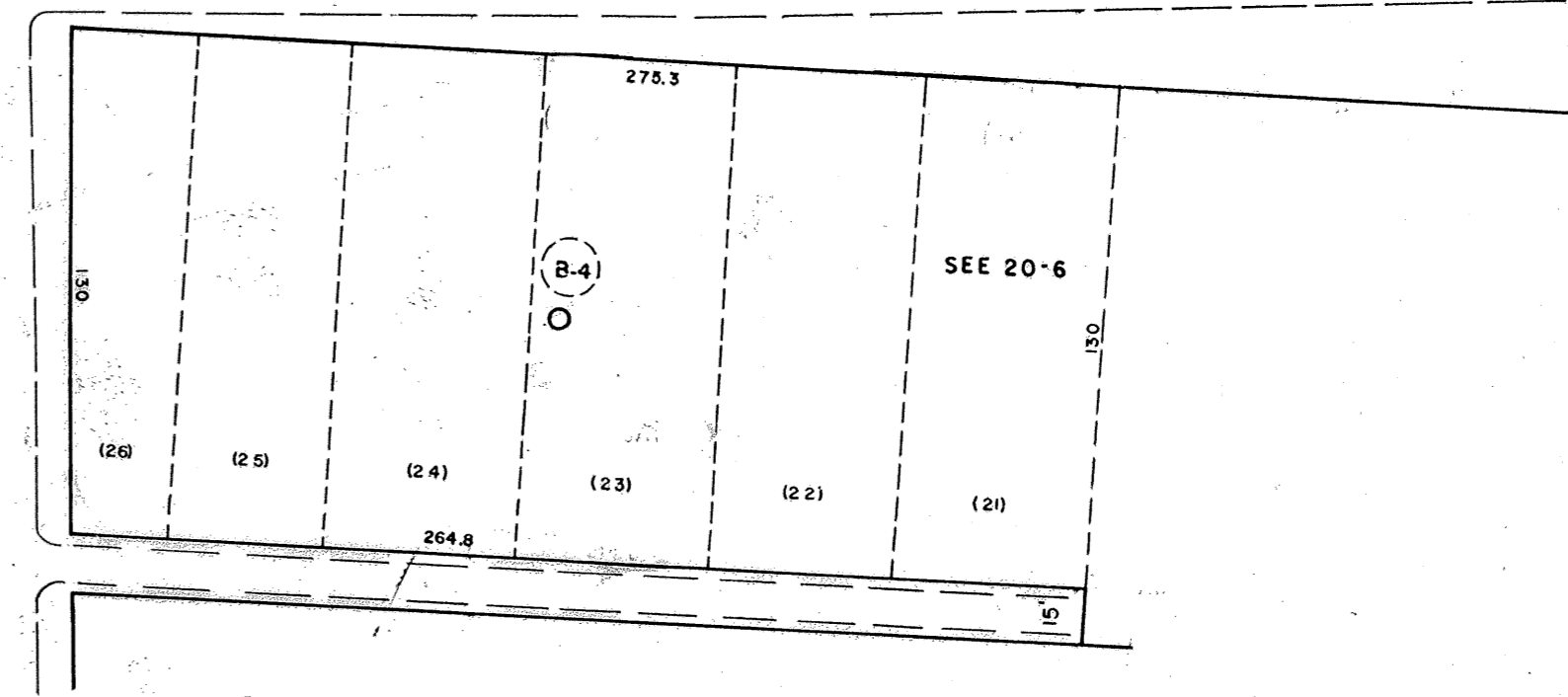
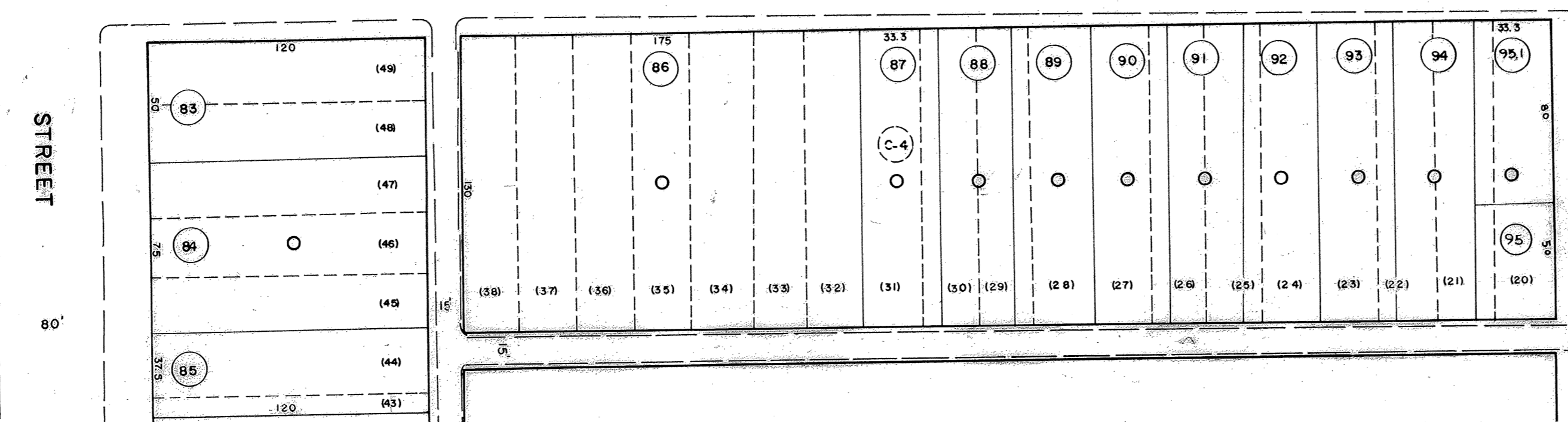
AVENUE



22-11

FIFTH AVENUE

AVENUE



22-20

DRAFTED BY: *gm*  
CHECKED BY: *ES*

22-17

22-18

22-18

FOR TAX PURPOSES ONLY

PREPARED BY

**AERO SERVICE CORPORATION**  
A DIVISION OF LITTON INDUSTRIES  
210 E. COURTLAND ST. PHILADELPHIA, PA. 19120



**AMERICAN AIR SURVEYS, INC.**  
907 PENN AVENUE, PITTSBURGH 22, PA.  
NEW YORK ATLANTA

**Legend**

Property Line	Original lot line
Right of way line	Deed lot number (in parenthesis)
Edge of pavement or roadway	Parcel or index number (in circle)
Corporation line	Improvement
District line	Railroad
County line	Scaled Dimension
Stream	Original block number

**Revisions**

1	19 Sept 72	J.M.	9	2-12-2000	J.A.B.	17
2	9-5-74	DAVIS	B.S.	8-5-08	J.A.B.	18
3	2/15/76	J.C.	11			19
4	1/31/77	S.L.R.	12			20
5	Revised to 7-1-82	J.E.B.	13			21
6	Revised to 7-1-85	J.E.B.	14			22
7	OGIS	4-12-94	CS	15		23
8		2-26-97	J.E.B.	16		24

**KANAWHA COUNTY**

Office of Assessor

CHARLESTON, WEST VIRGINIA

SOUTH CHARLESTON CORPORATION - 22

Map No. 10

Photo No.: 1125

Scale: 1" = 50'

Date, Photography: April, May 1964

Date, Map: 3-12-65