

KANAWHA

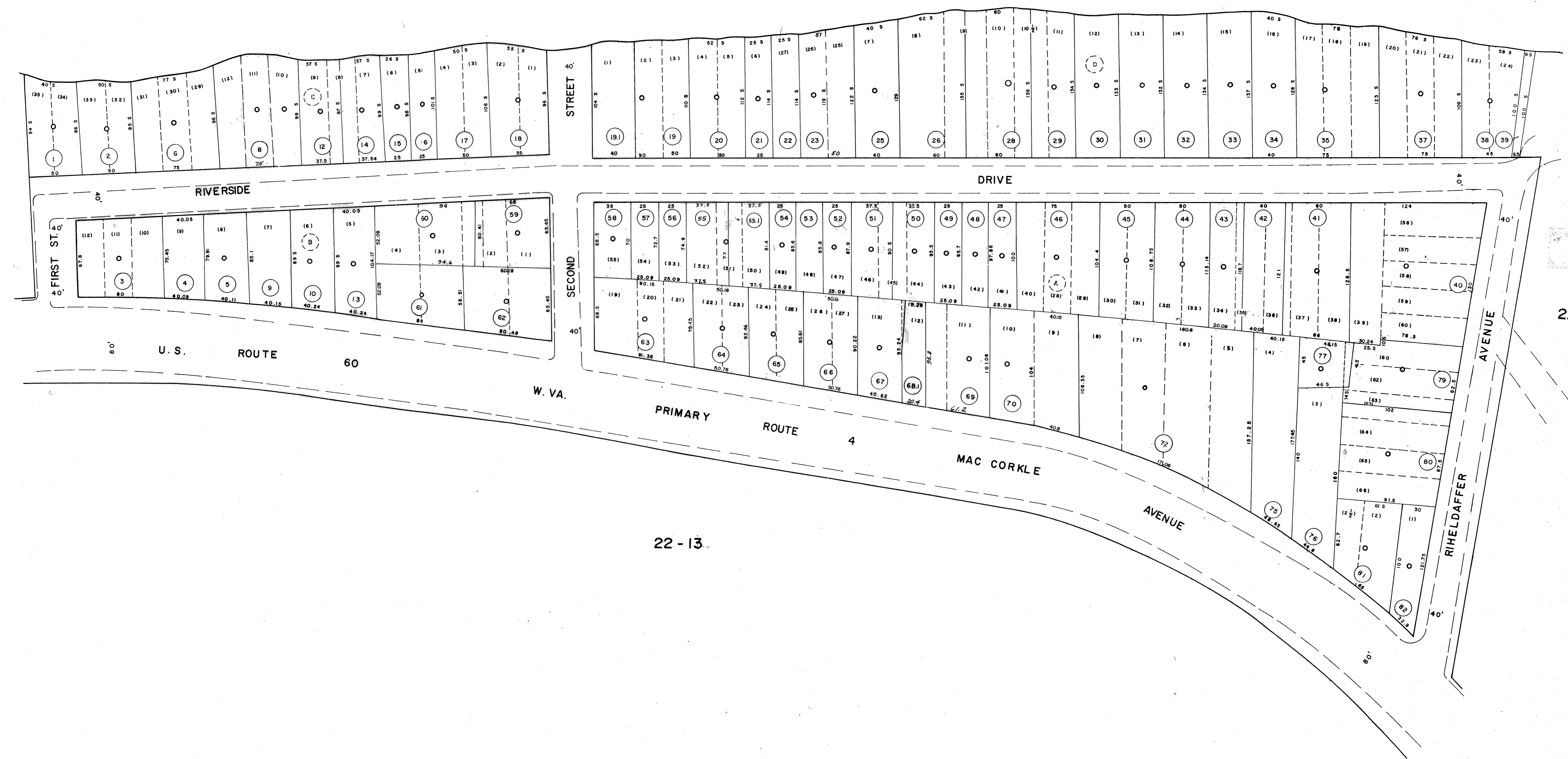
RIVER

22 - 1

22 - 1

22 - 2

22 - 13



DRAFTED BY: H.M.  
CHECKED BY: E.S.

NOTE  
PARCEL NOS 73, 74, 78 NOT USED.

FOR TAX PURPOSES ONLY  
PREPARED BY  
**AERO SERVICE CORPORATION**  
A DIVISION OF LITTON INDUSTRIES  
210 E COURTLAND ST PHILADELPHIA PA 19120

**AMERICAN AIR SURVEYS, INC.**  
907 PENN AVENUE, PITTSBURGH 22, PA.  
NEW YORK ATLANTA

**Legend**

Property line	Original lot line	Deed lot number (in parenthesis)	Parcel or index number (in circle)
Right of way line	Improvement	Railroad	Scaled Dimension
Edge of pavement or roadway	County line	Stream	Original block number

**Revisions**

1	9/19/72	DHP	9	8-5-08 J.A.B.	17
2	2/25/76	J.C.	10		18
3	1/31/75	SLR	11		19
4	Revised to 7-1-82		12		20
5	Revised to 7-1-86		13		21
6	REV. TO 7-1-87	NCS	14		22
7	OGIS 4-13-94	CS	15		23
8	2-26-97	J.E.B.	16		24

**KANAWHA COUNTY**  
Office of Assessor  
CHARLESTON, WEST VIRGINIA

SOUTH CHARLESTON CORPORATION - 22  
Map No. 1A  
Photo No.: 1163  
Date, Photography: April, May 1964  
Scale: 1" = 50'  
Date, Map: 3-12-65