

22 - 23

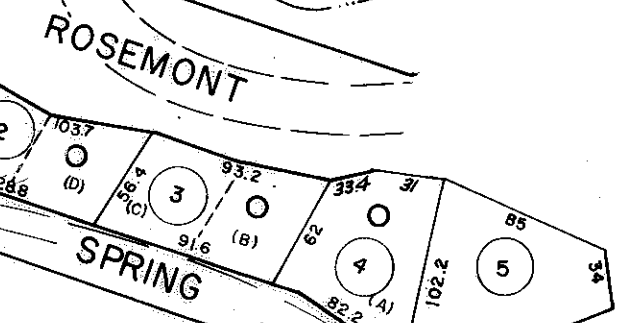
22 - 25

22 - 26

SEE
MAP 22-23-1
P/O 35.68 Ac.

1.1
3.8 AC.
EXEMPT CITY OF SOUTH CHAS.

1
EXEMPT
CITY OF SOUTH CHARLESTON
5.93 AC.
O



DRAFTED BY: C.M.M.
CHECKED BY: E.S.

FOR TAX PURPOSES ONLY

AERO SERVICE CORPORATION
A DIVISION OF LISTON INDUSTRIES
210 E. COURTLAND ST. PHILADELPHIA PA 19120

PREPARED BY
AMERICAN AIR SURVEYS, INC.
907 PENN AVENUE, PITTSBURGH 22, PA.
NEW YORK ATLANTA

Legend

Property line	Original lot line
Right of way line	Deed lot number (in parenthesis)
Edge of pavement or roadway	Parcel or index number (in circle)
Corporation line	Improvement
District line	Railroad
County line	Scaled Dimension
Stream	Original block number

Revisions

1	9/19/72	JHP	9	1-1-99	J.E.B.	17
2		9-74	PAH	10		18
3				11		19
4	Feb. 74			12		20
5	Revised to 7-1-82	J.E.B.		13		21
6	7-1-83	L.E.S.		14		22
7	Revised to 2-26-97	J.E.B.		15		23
8				16		24

KANAWHA COUNTY
Office of Assessor
CHARLESTON, WEST VIRGINIA

SOUTH CHARLESTON CORPORATION - 22
Map No. 24
Photo No.: 1121 Scale: 1"=100'
Date, Photography: April, May 1964 Date, Map: 3-12-65