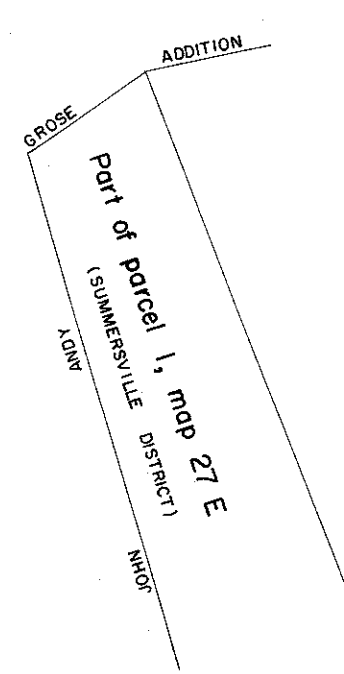




SEE 18 (in Town of Summersville)



FOR TAX PURPOSES ONLY

PREPARED BY
AERO SERVICE CORPORATION
 210 E. COURTLAND STREET PHILADELPHIA, PENNA.

Legend

Property line	—————	Original lot line	—————
Edge of pavement or roadway	—————	Deed lot number in parenthesis	(15)
Corporation line	—————	Parcel or index number in circle	○
District line	—————	Improvement	⊙
County line	—————	Railroad	+++++

Revisions

1	7-1-63	LES	9	17
2			10	18
3			11	19
4			12	20
5			13	21
6			14	22
7			15	23
8			16	24

NICHOLAS COUNTY — WEST VIRGINIA
 Office of Assessor

SUMMERSVILLE DISTRICT
 City — Town — District:

27A

Map No: _____
 Date, Aerial Photography: 4-20-61 Date, Map: 5-2-62
 Photo No: 8-236 & 237, 8-237 & 238 Scale: 1" = 100'