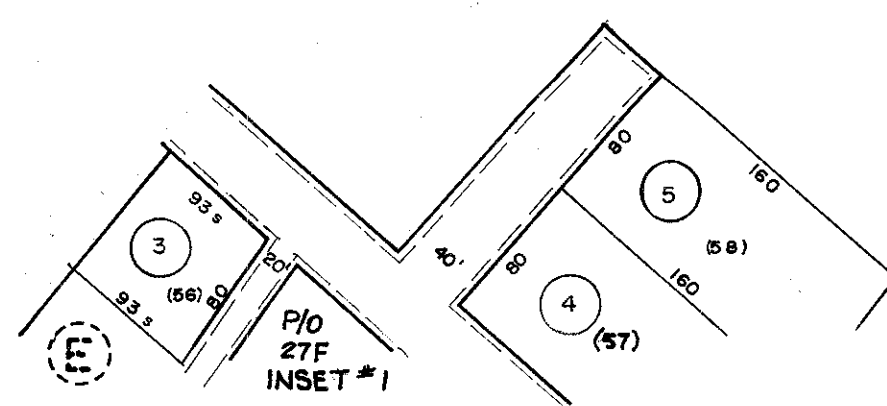


27A

SEE SUMMERSVILLE CORR. 19

SEE SUMMERSVILLE CORR. 23



27F

FOR TAX PURPOSES ONLY

PREPARED BY  
**AERO SERVICE CORPORATION**  
 210 E. COURTLAND STREET PHILADELPHIA, PENNA.

Legend	
Property line	Original lot line
Edge of pavement or roadway	Deed lot number in parenthesis (15)
Corporation line	Parcel or index number in circle
District line	Improvement
County line	Railroad

Revisions	
1	REVISED TO JUNE 1965 rgs
2	10-2-79
3	7-1-83 L.E.S.
4	REV. TO 7-1-86 NCS
5	
6	
7	
8	

**NICHOLAS COUNTY — WEST VIRGINIA**  
 Office of Assessor

**SUMMERSVILLE DISTRICT**  
 City — Town — District:  
**27B**  
 Map No.:  
 Date, Aerial Photography: 4-20-61 Date, Map: 5-2-62  
 Photo No: 8-236 & 237, 8-237 & 238 Scale: 1" = 100'