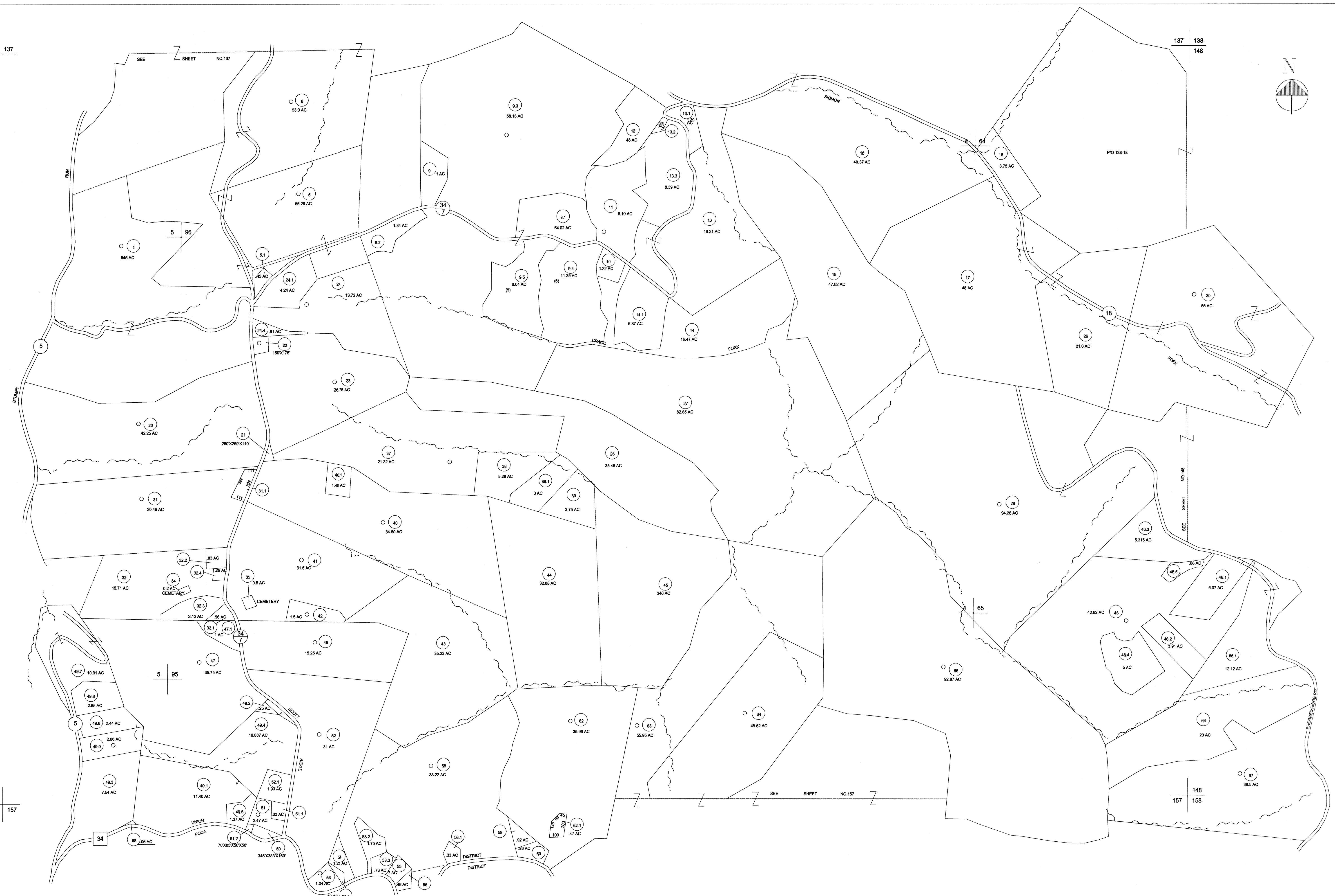
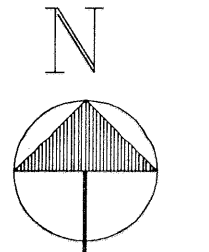


136 137
146

137 138
148



146 157
156

148 158
157

FOR TAX PURPOSES ONLY
PREPARED BY
MICHAEL BAKER, JR., INC.
CONSULTING ENGINEERS
ROCHESTER, PENNSYLVANIA

LEGEND	
PROPERTY LINE	———
EDGE OF PAVEMENT OR ROADWAY	———
CORPORATION LINE	———
DISTRICT LINE	———
COUNTY LINE	———
STATE LINE	———
LAND HOOK	———
WATER	~~~~~
ORIGINAL LOT LINE	○ (15)
DEED LOT NUMBER	○ (99)
PARCEL OR INDEX NO.	○
IMPROVEMENT(S)	○
RAILROAD	———
SCALED DIMENSION	(S)
DEED DIMENSION	(D)
CALCULATED AREA	(C)

RESTRICTION
ALL TAX MAPS CREATED UNDER THE PROVISIONS OF REAPPRAISAL LEGISLATION ARE THE PROPERTY OF THE STATE OF WEST VIRGINIA AND THE REPRODUCTION, COPYING, DISTRIBUTION OR SALE OF SUCH TAX MAPS OR ANY COPIES THEREOF WITHOUT THE WRITTEN PERMISSION OF THE STATE TAX COMMISSIONER IS PROHIBITED BY LAW.

REVISIONS	KEY MAP
	136 137 138
	146 147 148
	156 157 158
1. CONVERTED TO CAD FILE 6/25/97	

PUTNAM COUNTY STATE OF WEST VIRGINIA

OFFICE OF ASSESSOR

DISTRICT UNION	
SHEET NO.:	147
DATE, AERIAL PHOTOGRAPHY:	DATE, MAP:
PHOTO NO.:	SCALE: 1"= 400'