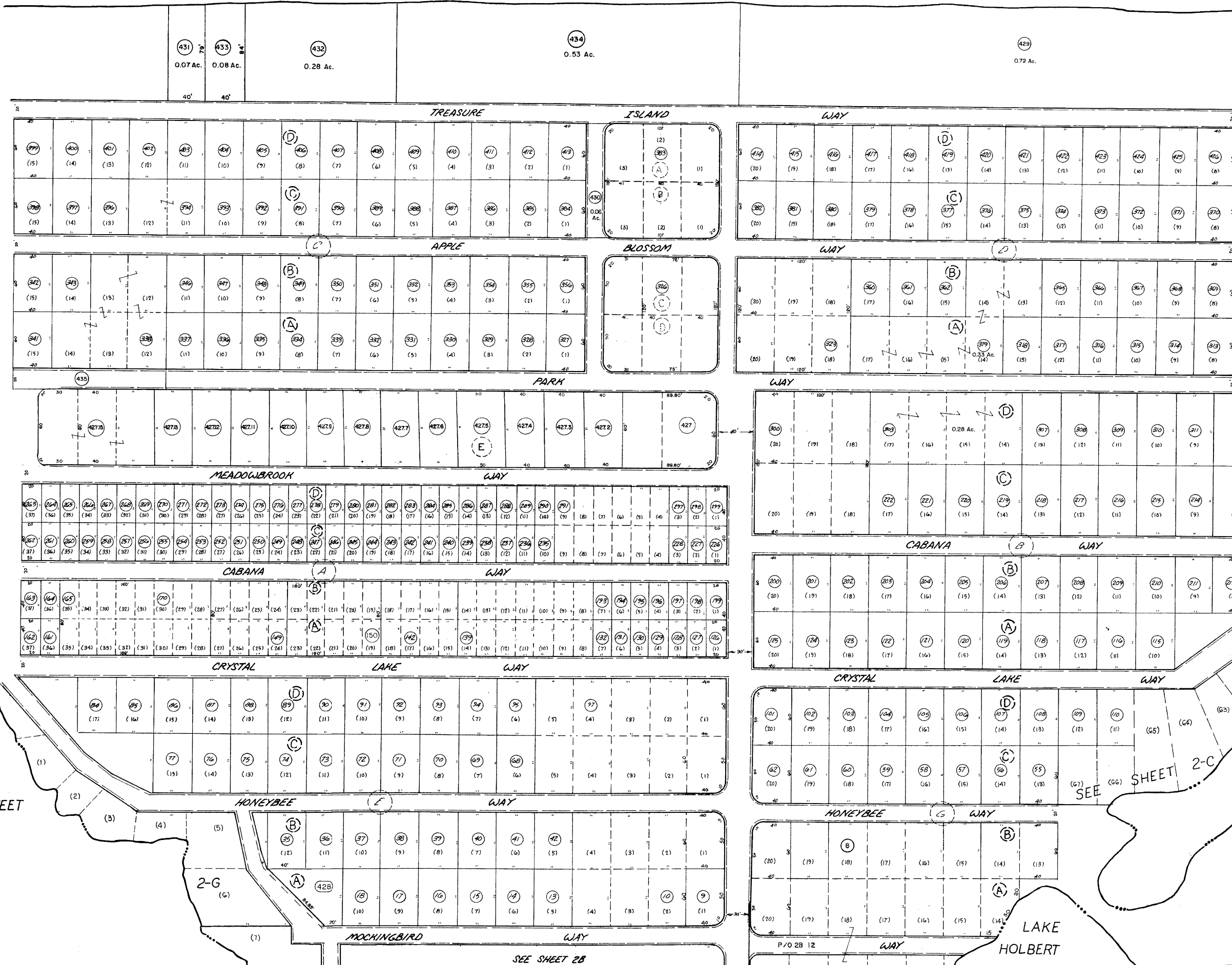


SEE SHEET 2-H

2-H

SEE SHEET 2-G



SEE SHEET 2C  
CEM.

SEE SHEET 2-C

CRYSTAL LAKE

LAKE HOLBERT

For Tax Purposes Only

Prepared by  
ASSESSMENT EQUALIZATION DIV.  
STATE TAX COMMISSIONER  
CHARLESTON, W.VA.

LEGEND	
Property line	—
Edge of pavement or roadway	- - - -
Corporation line	- · - · -
District line	- - - -
County line	- - - -
Original lot line	— (15)
Dead lot number	— (15)
Parcel or index number	— (9)
Improvement	— (0)
Railroad	—

REVISIONS	
1	1-29-74 B. SMITH
2	Revised to 7-1-81 S.D.F.
3	7-12 L.F.S.
4	EXCALIBUR GRAPHICS 7/23
5	SLS INC 1/9/98 J.W.M.
6	SLS INC 12/18/98 D.S.W.
7	SLS INC 12/15/99 D.S.W.
8	ES1 12/28/00 REK
9	ES1 1/29/02 REK
10	S.B.H. 1/4/04

RESTRICTION	
All tax maps created under the provisions of reappraisal legislation are the property of the State of West Virginia and the reproduction, copying, distribution or sale of such tax maps or any copies thereof without the written permission of the State Tax Commissioner is prohibited by law.	
S.B.H. 1/7/05	
S.B.H. 12/31/05	
S.B.H. 2/18/07	
S.B.H. 2/1/08	

KEY MAP	
2A	2C
2B	

WIRT COUNTY  
STATE OF WEST VIRGINIA  
Office of Assessor

NEWARK DISTRICT  
SHEET-2A

Date, Aerial Photography:  
Photo No:

Date, Map: 3-23-72  
Scale: 1"=50'