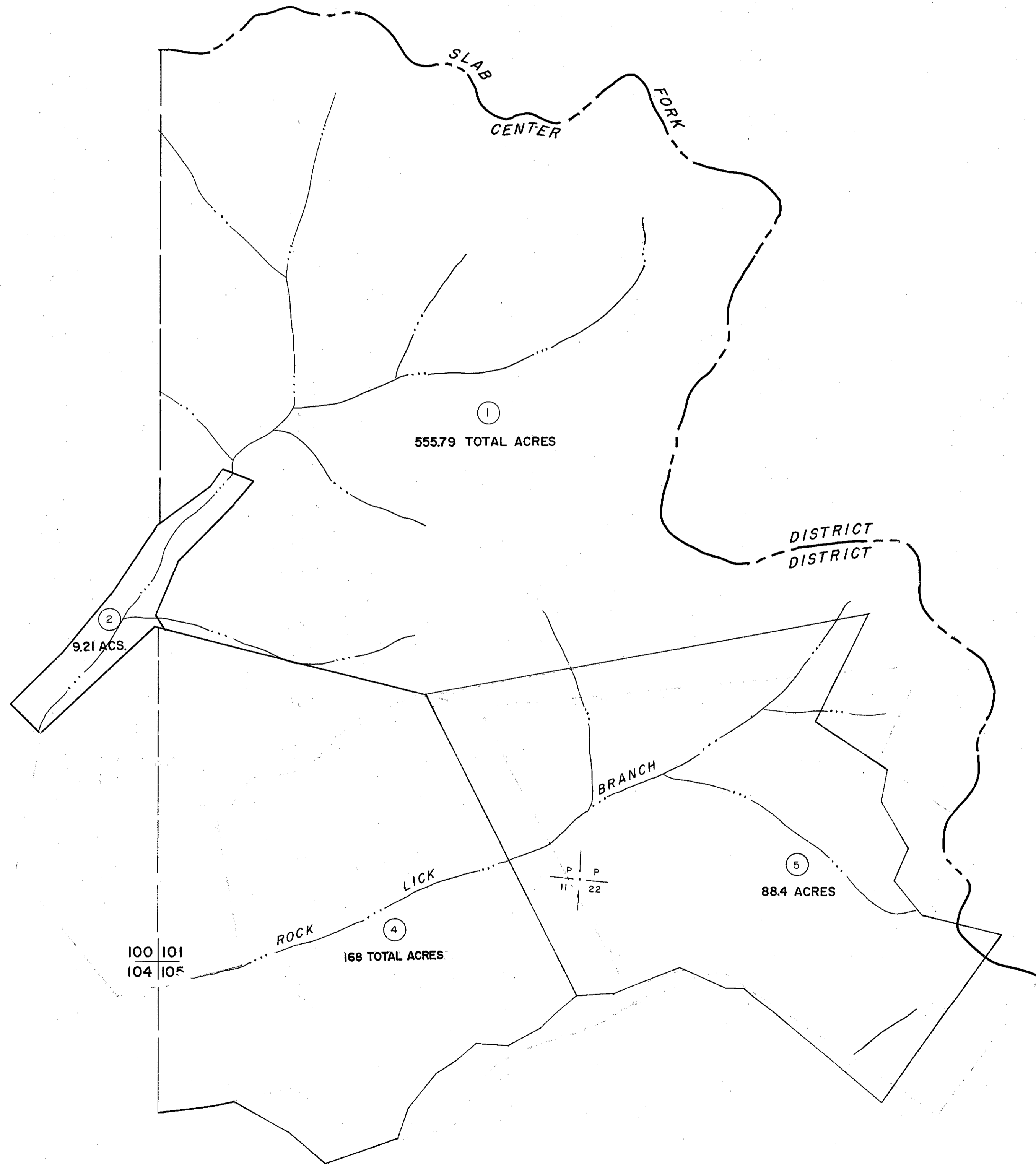


100 | 101

101 |



For Tax Purposes Only

Prepared by
MICHAEL BAKER, JR., INC.
Consulting Engineers
Rochester, Pennsylvania

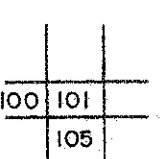
Legend

Property line	—	Original lot line	—
Edge of pavement or roadway	—	Deed lot number	(15)
Corporation line	—	Parcel or index number	(99)
District line	—	Improvement	o
County line	—	Railroad	—

Revisions

1	3-1-64	9	17
2	Corrected by M.B.J.	10	18
3	SLS INC. 12/31/97 DSW	11	19
4		12	20
5		13	21
6		14	22
7		15	23
8		16	24

KEY MAP



WYOMING COUNTY
STATE OF WEST VIRGINIA
Office of Assessor

DISTRICT
CENTER

SHEET NO: 101

Date, Aerial Photography: November, 1962 Date, Map: April, 1963
Photo No: Scale: 1" = 400'