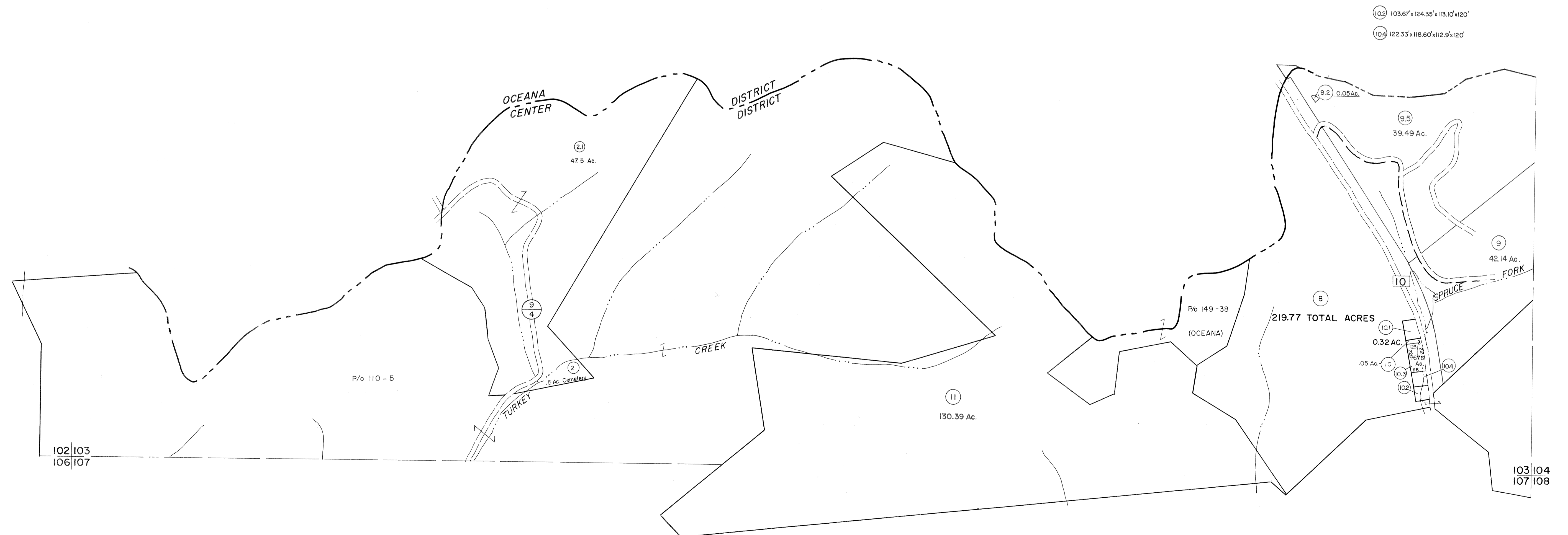


102|103

103|104



102|103  
106|107

103|104  
107|108

For Tax Purposes Only

Prepared by  
**MICHAEL BAKER, JR., INC.**  
Consulting Engineers  
Rochester, Pennsylvania

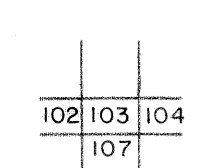
Legend

Property line	—————	Original lot line	-----
Edge of pavement or roadway	-----	Deed lot number	(15)
Corporation line	-----	Parcel or index number	(19)
District line	-----	Improvement	o
County line	-----	Railroad	+

Revisions

No.	Description	By	Date	No.	Description	By	Date
1	3-1-64	ESI	2/5/02	17			
2	Revised to 7-1-81	REK		18			
3	REV. TO 7-1-88	NCS		19			
4	OGIS 11/1/92	SAJ		20			
5	OGIS 2/26/94	DSH		21			
6	OGIS 12/26/96	SAJ		22			
7	ESI 2/16/01	REK		23			
8				24			

KEY MAP



**WYOMING COUNTY**  
STATE OF WEST VIRGINIA  
Office of Assessor

DISTRICT

**CENTER**

**SHEET NO: 103**

Date, Aerial Photography: November, 1962 Date, Map: April, 1963  
Photo No: Scale: 1" = 400'